



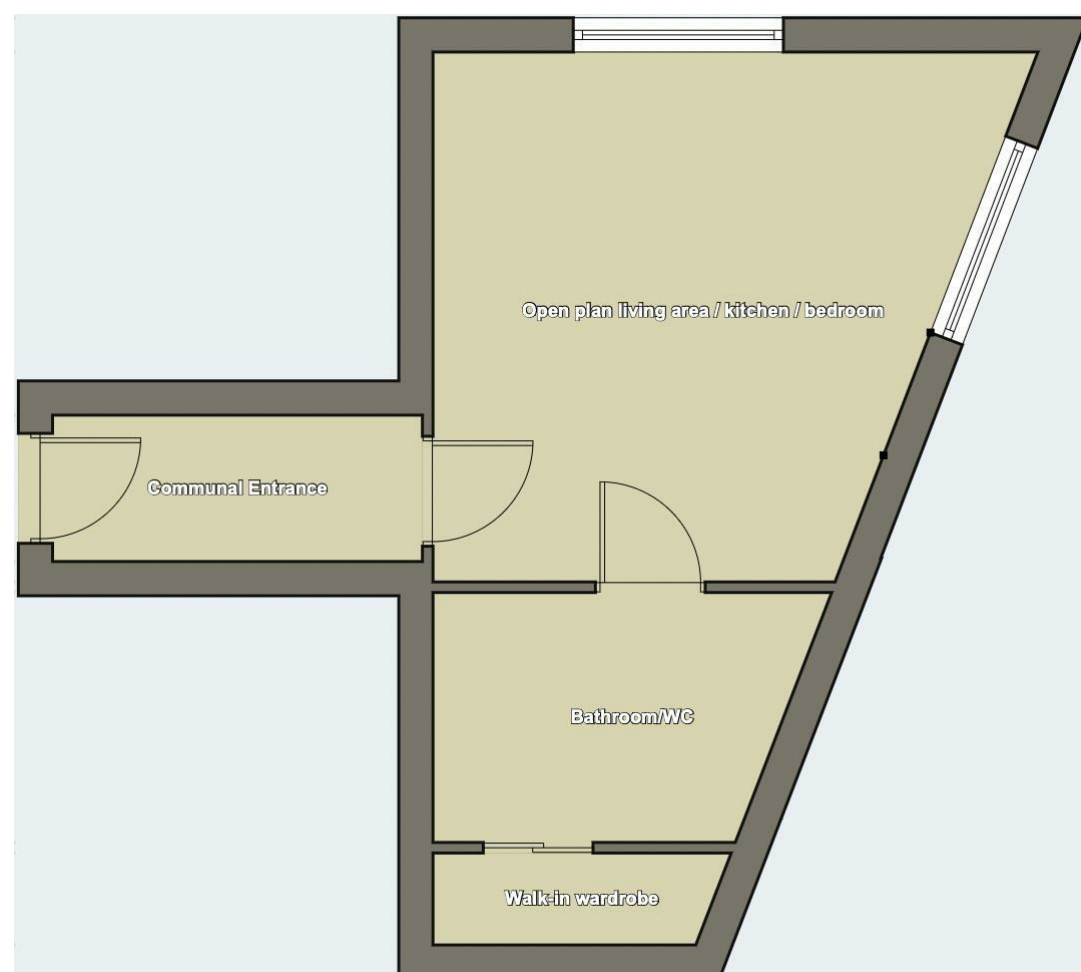
Viewings

Viewings by arrangement only.
Call 0114 483 0038 to make an appointment.

Vendors Comments

Add text here

Energy Efficiency Rating		
	Current	Potential
Very energy efficient - lower running costs		
(92 plus) A		
(81-91) B		
(69-80) C		
(55-68) D	68	74
(39-54) E		
(21-38) F		
(1-20) G		
Not energy efficient - higher running costs		
England & Wales	EU Directive 2002/91/EC	



JC SALES & LETTINGS

Tel: 0114 483 0038

E-mail: sales@jc-salesandlettings.com

Website: www.jc-salesandlettings.com



317b Upperthorpe, Sheffield, S6 3NG

£650 Per month

- Available for December move-in
- Ground floor, studio apartment
- Very modern kitchen & bathroom
- Highly sought after residential area
- EPC Grade D
- Gas and electricity bills included in the rent
- Extremely well presented throughout
- Ideal for a professional couple
- Viewing highly recommended

317b Upperthorpe, Sheffield S6 3NG

***AVAILABLE FOR DECEMBER MOVE-IN ***
*** GAS and ELECTRICITY BILLS INCLUDED IN THE RENT ***

A STUNNING, ground floor studio apartment, which truly needs to be viewed to be fully appreciated.
Extremely WELL PRESENTED throughout with a VERY MODERN KITCHEN AND BATHROOM.
Situatued in a highly sought after residential area, ideal for a professional couple and conveniently located for a host of local amenities.
In brief the accommodation comprises: communal entrance hall, open plan living room / kitchen / bedroom, bathroom/WC and a walk-in wardrobe.
An early viewing is highly recommended to avoid disappointment!
EPC Grade D.

 0

 1

 1

 D

Council Tax Band: A

