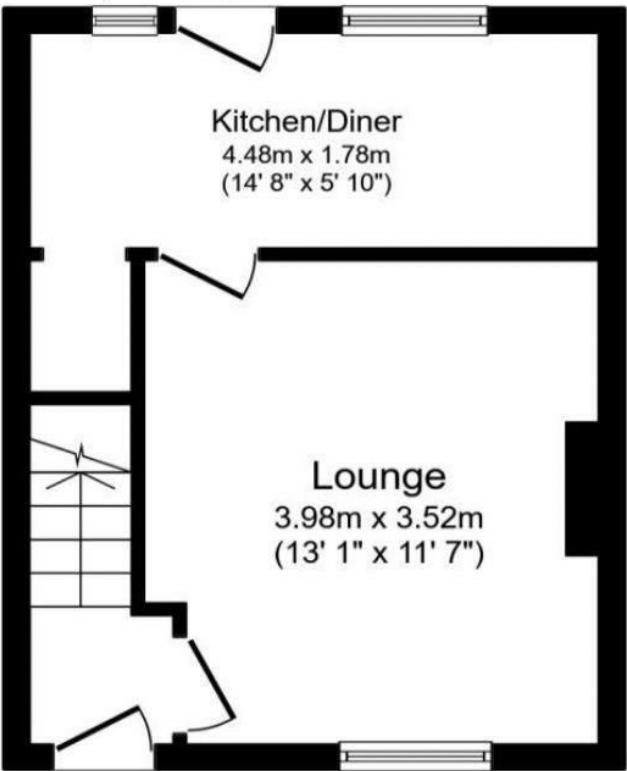


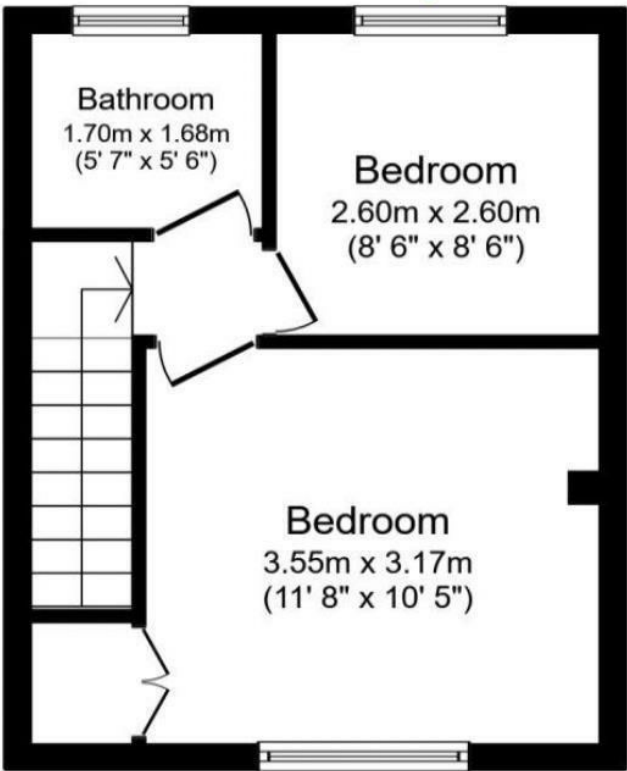
Viewings
Viewings by arrangement only.
Call 0114 483 0038 to make an appointment.

Vendors Comments
Add text here

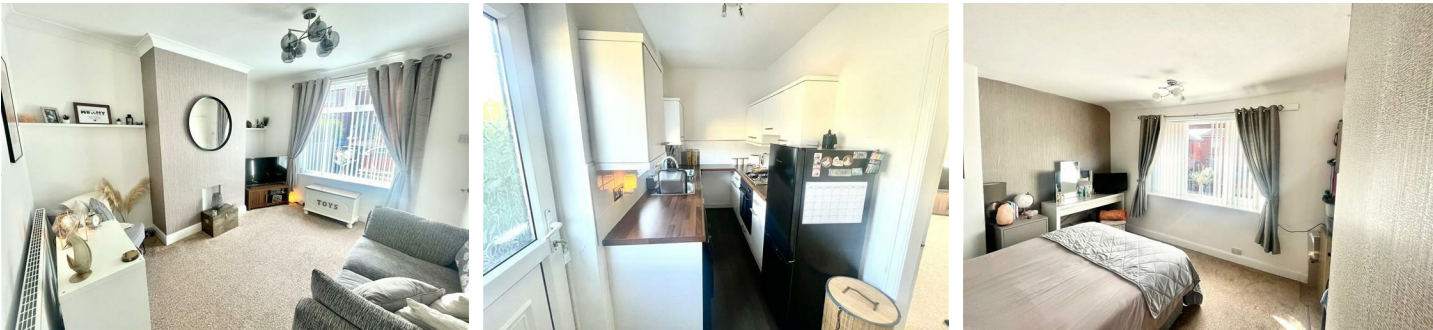
Energy Efficiency Rating		
	Current	Potential
Very energy efficient - lower running costs		
(92 plus) A		90
(81-91) B		
(69-80) C		
(55-68) D	66	
(39-54) E		
(21-38) F		
(1-20) G		
Not energy efficient - higher running costs		
England & Wales		EU Directive 2002/91/EC



Ground Floor



First Floor



57 Maple Grove, Sheffield, Yorkshire, S9 4AQ

£850 Per month

- Two bedroom mid town house
- Modern kitchen
- Well presented throughout
- Excellent local amenities
- EPC Grade D
- Large garden to the rear
- Modern bathroom
- Highly desirable location
- Very good access to motorway links

57 Maple Grove, Sheffield S9 4AQ

STUNNING, two bedroom mid town house, which benefits from a LARGE BACK GARDEN.
Very modern internally and well presented throughout.
Highly popular location, close to an abundance of local amenities and very good access to motorway links.
In brief the accommodation comprises: entrance hall, lounge, dining kitchen, two first floor bedrooms and a modern bathroom/WC. Garden to the front and rear.
An early viewing is highly recommended to avoid disappointment!
EPC Grade D.



Council Tax Band: A

