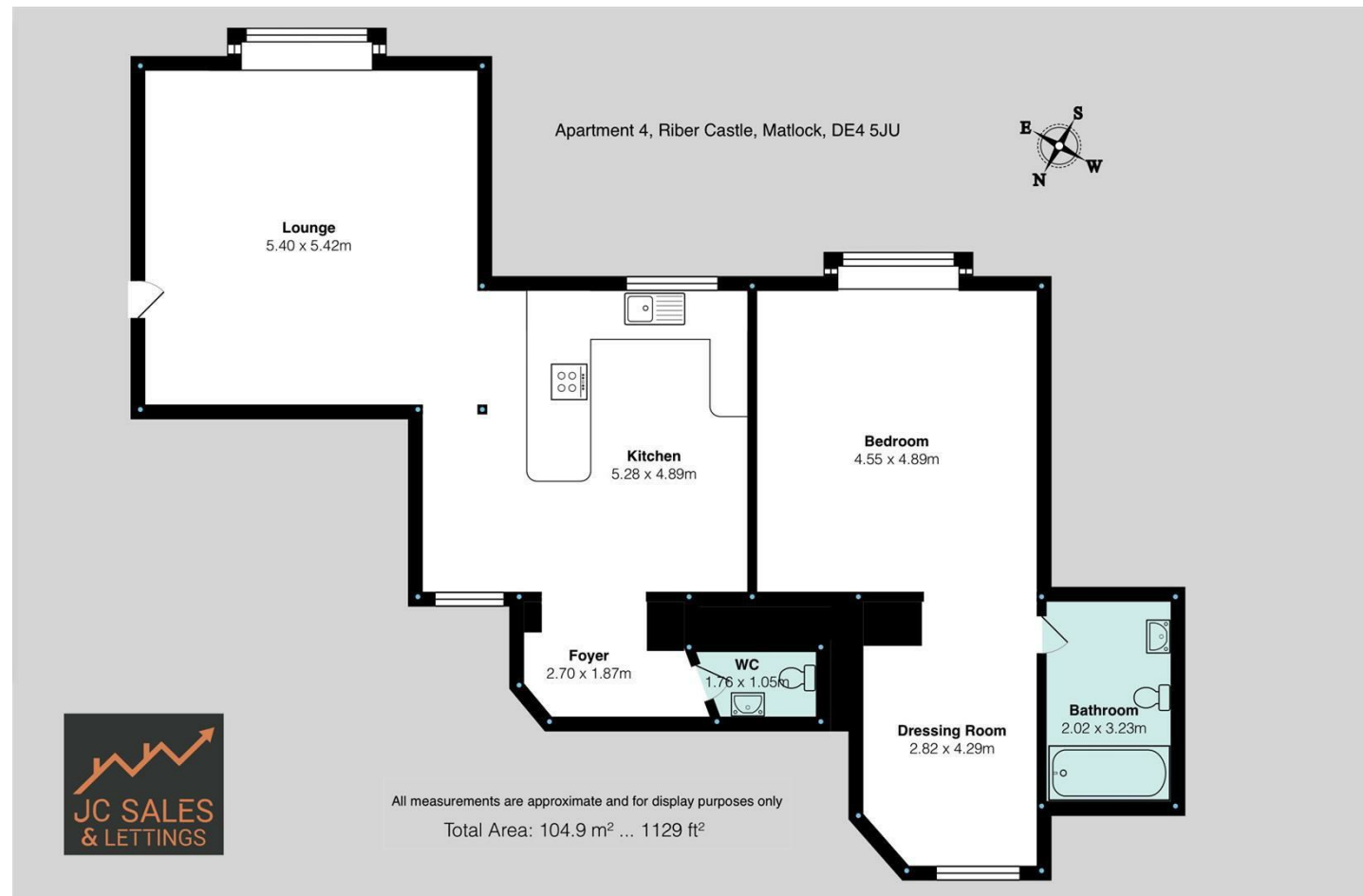
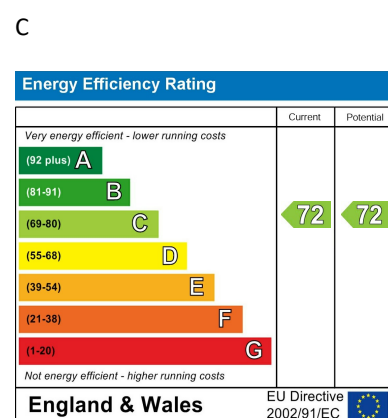


Directions

Viewings

Viewings by arrangement only. Call 0114 483 0038 to make an appointment.

EPC Rating



Apartment 4 Ribber Castle, Ribber, Matlock, DE4 5JU

£1,650 Per month

- Modern and high specification fixtures and fittings throughout
- Ample off road car parking
- Very large, one double bedroom apartment
- Numerous furnishing options are available
- Internal inspection highly recommended
- Orangery, residents spa, steam room and gym
- Courtyard gardens
- One bathroom with additional WC
- Outstanding quality with exceptional attention to detail
- EPC Grade C

Apartment 4 Ribber Castle, Matlock DE4 5JU

An exceptional opportunity to rent a ground floor apartment within a historic setting, combining timeless architecture with sleek, contemporary living.

This beautifully presented one-bedroom apartment offers a seamless fusion of heritage charm and modern sophistication. Featuring a brand-new, stylish kitchen and bathroom, a spacious open-plan living and kitchen area, a generously sized double bedroom, and an additional WC, this home is designed for comfort and elegance.

JC Sales & Lettings proudly present this outstanding residence, part of the landmark Ribber Castle development — a prestigious and architecturally significant property that offers a rare blend of history and modern luxury.

Finished to an exceptional standard throughout, the apartment features premium materials and high-quality fixtures, providing a refined and comfortable living experience. As a resident, you'll enjoy access to a selection of exclusive amenities, including a private orangery, a luxury spa with steam room, a cutting-edge fitness suite, and beautifully maintained, historic courtyard gardens.

This truly unique property needs to be experienced in person to be fully appreciated — a one-of-a-kind rental for those who value elegance, character, and exclusivity.

To arrange a private viewing, please contact JC Sales & Lettings at 0114 483 0038. Viewings are by appointment only.



Council Tax Band: F

