

Directions

Viewings

Viewings by arrangement only. Call 0114 483 0038 to make an appointment.

EPC Rating

B

Energy Efficiency Rating		
	Current	Potential
Very energy efficient - lower running costs		
(92 plus) A		95
(81-91) B	84	
(69-80) C		
(55-68) D		
(39-54) E		
(21-38) F		
(1-20) G		
Not energy efficient - higher running costs		
England & Wales		
EU Directive 2002/91/EC		

JC SALES & LETTINGS

Tel: 0114 483 0038

E-mail: sales@jc-salesandlettings.com

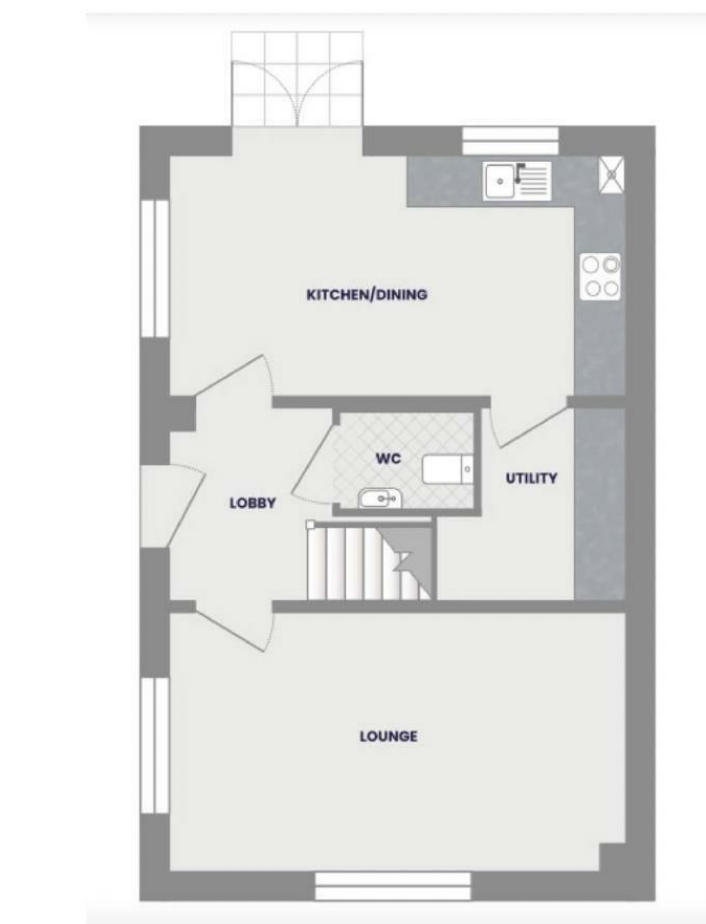
Website: www.jc-salesandlettings.com



2 Westville Lane, Holmewood, S42 5XF





£1,350 Per month

- Brand new property
- Two bathrooms and downstairs WC
- Kitchen with fitted appliances
- Close to local amenities and the countryside
- The photos used are CGIs and will differ slightly from finished product
- Three bedroom detached
- Driveway for two cars and garage
- Excellent, highly sought after location
- Early viewing is highly recommended
- EPC Grade B



2 Westville Lane, Holmewood S42 5XF

*** BRAND NEW - 3 BEDROOM DETACHED with DRIVEWAY AND GARAGE ***
An EXCELLENT OPPORTUNITY to rent this BRAND NEW, three bedroom DETACHED property on this HIGHLY SOUGHT AFTER development.
Ideal for a professional couple or family and conveniently located for local amenities, public transport links and the countryside. Occupying an enviable position and benefitting from two bathrooms and modern kitchen with fitted appliances.
In brief the accommodation comprises: entrance hall, downstairs WC, living room, dining kitchen, utility room, three first floor bedrooms, one with en-suite and a family bathroom/WC. Enclosed garden to the rear with a driveway for two cars and a garage.
An early viewing is highly recommended to avoid disappointment. EPC Grade B.
*** Please note - the photographs used are from the builders initial marketing. The property is available for let unfurnished and the decoration will differ slightly from the pictures provided ***

 3  2  1  B Council Tax Band: New Build

