

Directions

Viewings

Viewings by arrangement only. Call 0114 2666300 to make an appointment.

EPC Rating

E

Energy Efficiency Rating		Current	Potential
Very energy efficient - lower running costs			
(92 plus)	A		
(81-91)	B		
(69-80)	C		
(55-68)	D		
(39-54)	E	39	
(21-38)	F		
(1-20)	G		
Not energy efficient - higher running costs			
England & Wales		EU Directive 2002/91/EC	

78

39

78

39

78

39

78

39

78

39

78

39

78

39

78

39

78

39

78

39

78

39

78

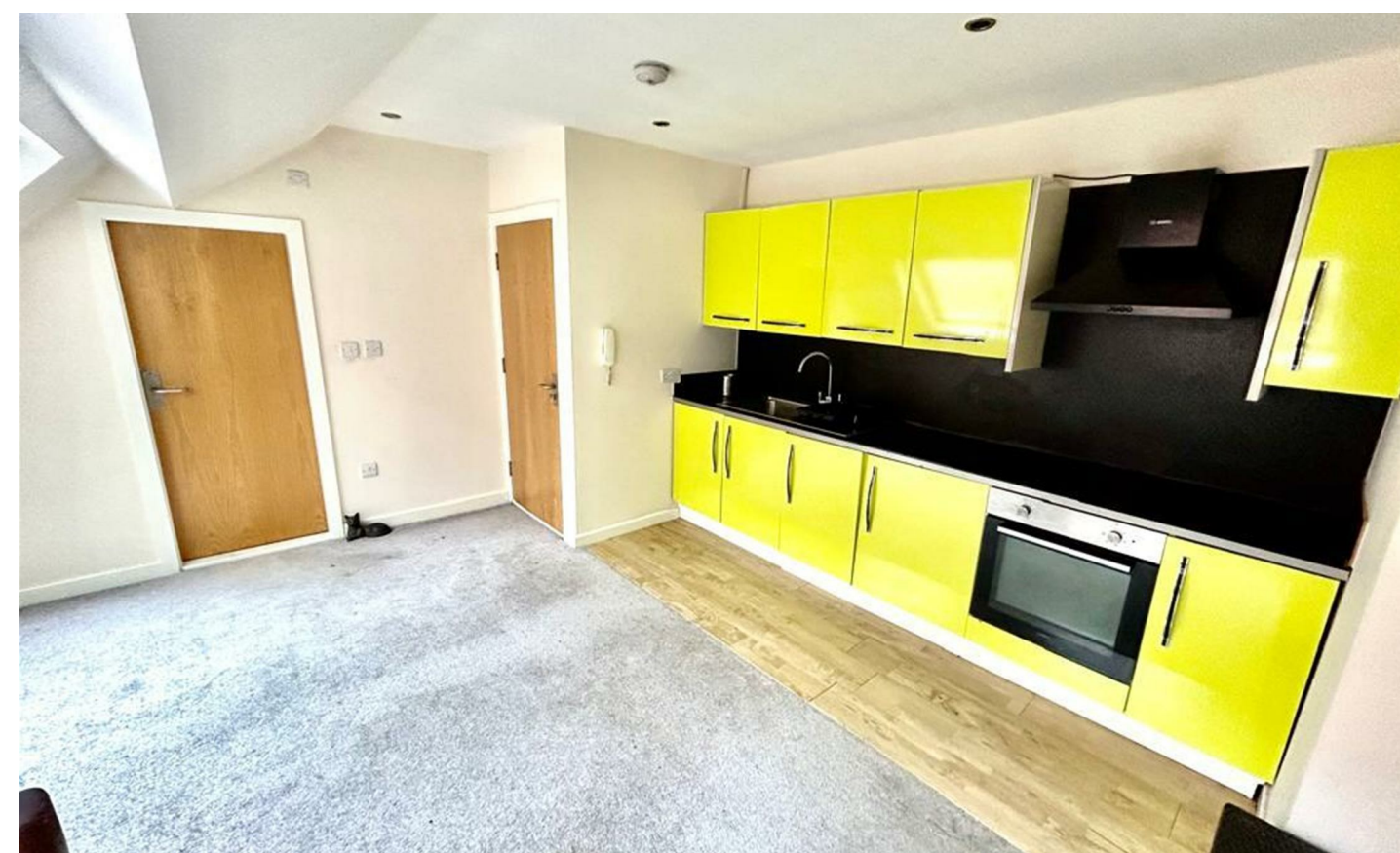
39

JC SALES & LETTINGS

Tel: 0114 483 0038

E-mail: sales@jc-salesandlettings.com

Website: www.jc-salesandlettings.com



Flat 5 10 Denby Street, Sheffield, S2 4QH

£1,000 Per month

- ***Energy, broadband and water bills included in the rent***
- Larger than average
- Ideal for a professional couple
- Well presented
- EPC Grade E
- Two double bedroom, top floor apartment
- Very close to Sheffield City Centre
- Close to an abundance of local amenities
- Viewing highly recommended

Flat 5 10 Denby Street, Sheffield S2 4QH

*** ENERGY, BROADBAND AND WATER BILLS INCLUDED IN THE RENT *** LARGER THAN AVERAGE and WELL PRESENTED, two DOUBLE bedroom, TOP FLOOR apartment. Ideal for a professional couple and situated conveniently for an abundance of local amenities in Sheffield City Centre and public transport links. In brief the accommodation comprises: entrance hall, open plan living room / kitchen, two double bedrooms and a bathroom/WC. An early viewing is highly recommended to avoid disappointment! EPC Grade E.



2



1



1



E

Council Tax Band: B