

Directions

Viewings

Viewings by arrangement only. Call 0114 4830038 to make an appointment.

EPC Rating

D

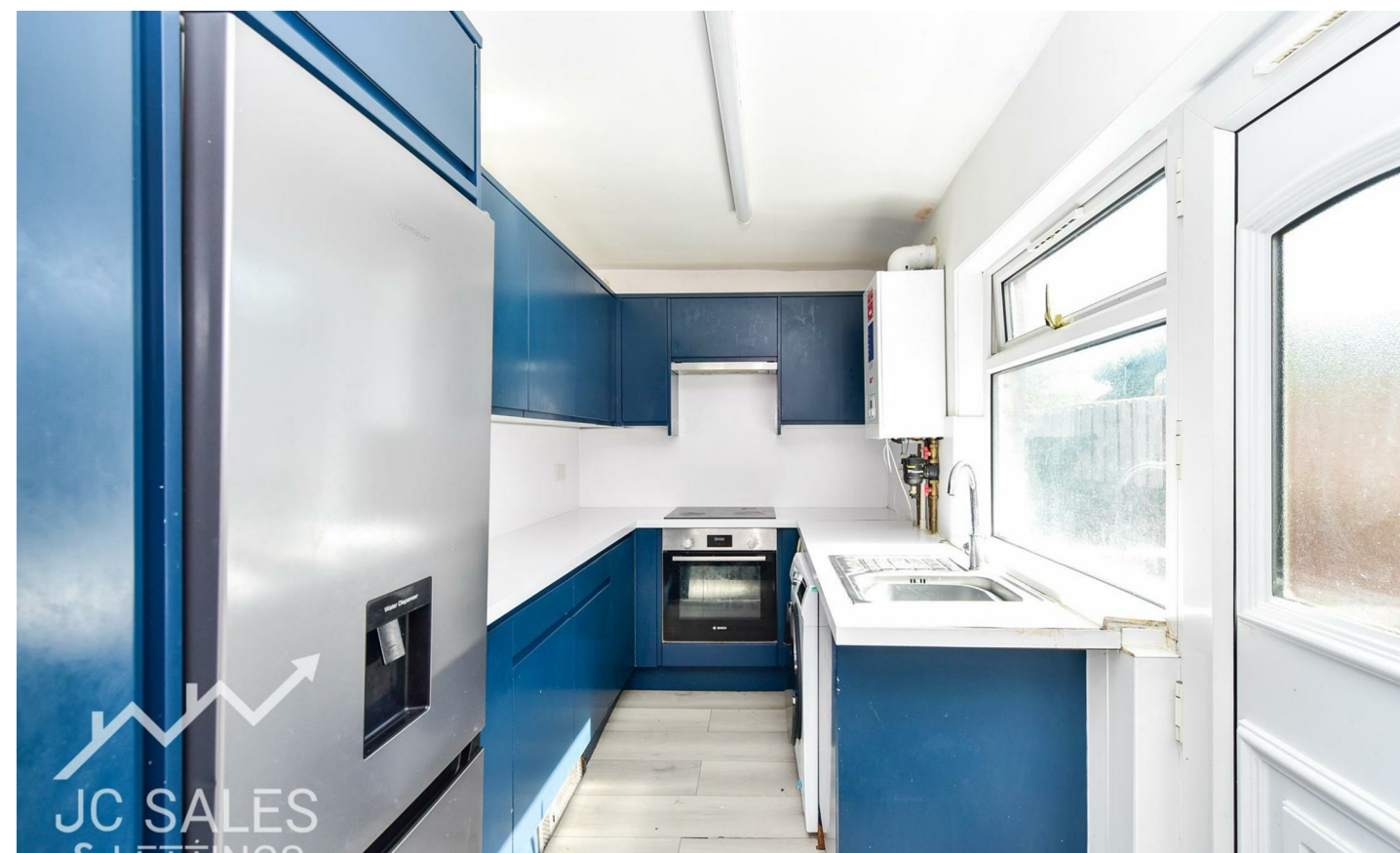
Energy Efficiency Rating		
	Current	Potential
Very energy efficient - lower running costs		
(92 plus) A		
(81-91) B		84
(69-80) C		
(55-68) D	59	
(39-54) E		
(21-38) F		
(1-20) G		
Not energy efficient - higher running costs		
England & Wales		
EU Directive 2002/91/EC		

JC SALES
& LETTINGS

Tel: 0114 483 0038

E-mail: sales@jc-salesandlettings.com

Website: www.jc-salesandlettings.com



16 Jardine Street, Sheffield, S9 1NA

Guide price £180,000

- Guide Price £180,000 - £190,000
- Modern kitchen
- Garden to the rear
- Good condition
- Ideal for first time buyers
- Spacious accommodation over three floors
- Two reception rooms
- No vendor chain (sold with vacant possession)
- Convenient location very close to Meadowhall Shopping Centre
- Four bedrooms



16 Jardine Street, Sheffield S9 1NA

*** GUIDE PRICE £180,000 - £190,000 ***
Spacious FOUR BEDROOM home, with TWO RECEPTION ROOMS, which is ideal for investors or owner-occupiers. Offering a GENEROUS AMOUNT OF ACCOMODATION over three floors, this home is ideal for the growing family. Benefitting from a MODERN KITCHEN, a dining room and is in GOOD ORDER throughout. The property is offered to the market with NO VENDOR CHAIN.

In brief the accommodation comprises: lounge, kitchen, four bedrooms, three of which are double and a family bathroom. There is a garden to the rear.

EPC Grade = D

 4

 1

 2

 D

Council Tax Band: A

