

Directions

Viewings

Viewings by arrangement only. Call 0114 2666300 to make an appointment.

EPC Rating

D

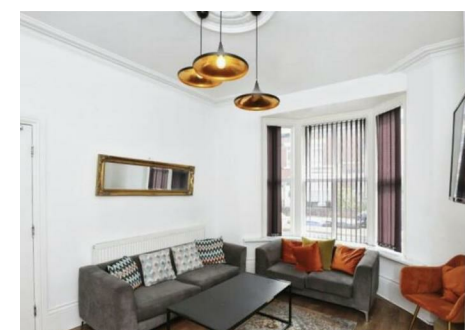
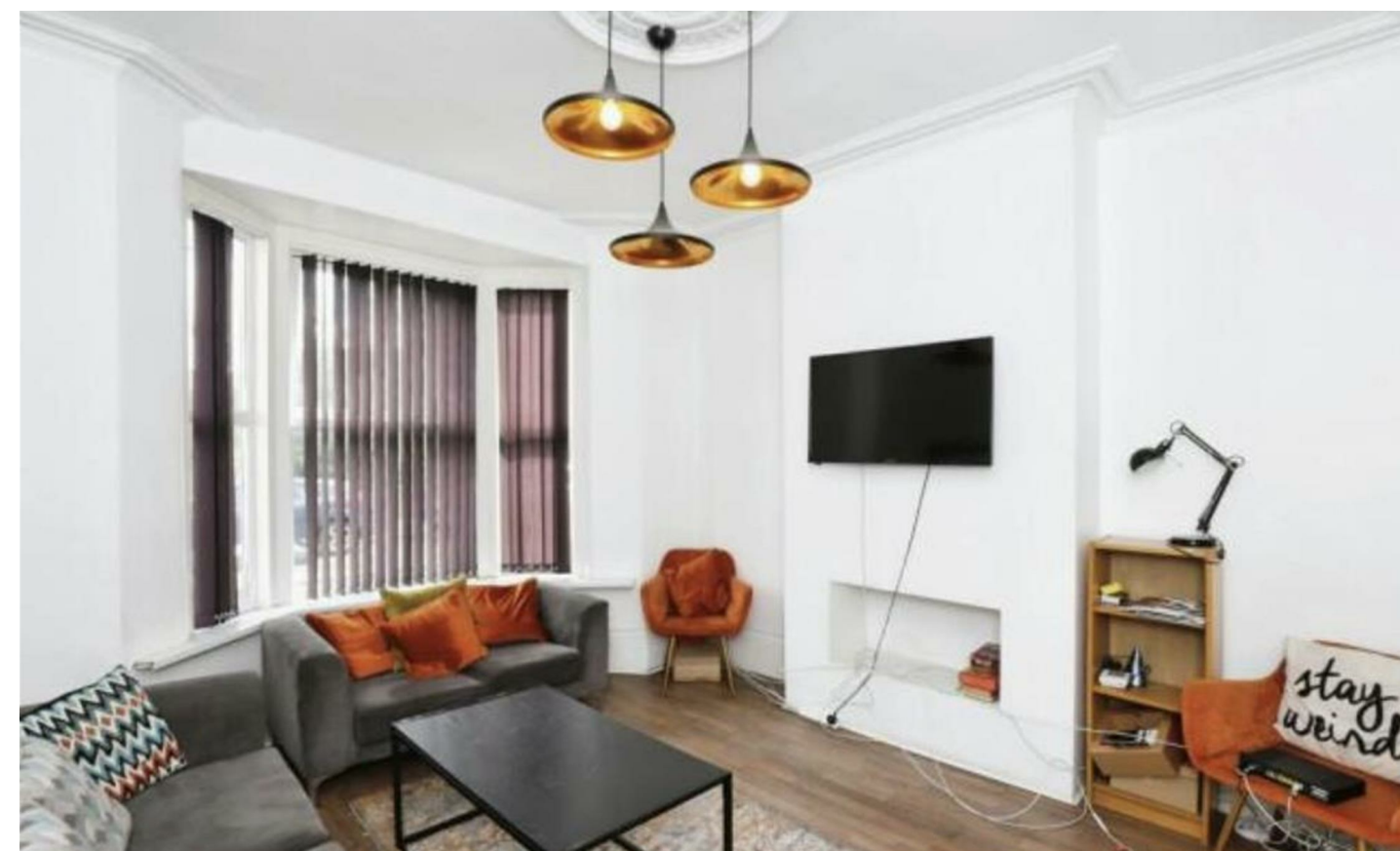
Energy Efficiency Rating		
	Current	Potential
Very energy efficient - lower running costs		
(92 plus) A		
(81-91) B		83
(69-80) C		
(55-68) D	60	
(39-54) E		
(21-38) F		
(1-20) G		
Not energy efficient - higher running costs		
England & Wales		
EU Directive 2002/91/EC		

**JC SALES
& LETTINGS**

Tel: 0114 483 0038

E-mail: sales@jc-salesandlettings.com

Website: www.jc-salesandlettings.com



35 St. Barnabas Road, Sheffield, S2 4TF

£89 Per week

- Seven bedrooms and two bathrooms
- £89 per person per week
- Excellent, highly popular location
- Huge property
- Viewing highly recommended
- Students or professional sharers
- Bills inclusive option at £109 per person per week
- Situated conveniently for Sheffield Hallam University
- Well proportioned living room
- EPC Grade D

35 St. Barnabas Road, Sheffield S2 4TF

***SEVEN BEDROOM, TWO BATHROOM - PROFESSIONAL OR STUDENT SHARER PROPERTY *** £89 PER PERSON PER WEEK *** BILLS INCLUDED OPTION AVAILABLE AT £109 PER PERSON PER WEEK *** Bills included option to include gas, electricity, fibre internet, water and TV licence.
Excellent location and conveniently situated for Sheffield Hallam University.
In brief the accommodation comprises: entrance hall, living room, large double bedroom and kitchen to the ground floor. There are four double bedrooms and a shower room / WC to the first floor and two double bedrooms and a shower room / WC to the second floor.
An early viewing is highly recommended to avoid disappointment.
EPC Grade D.



Council Tax Band: A

