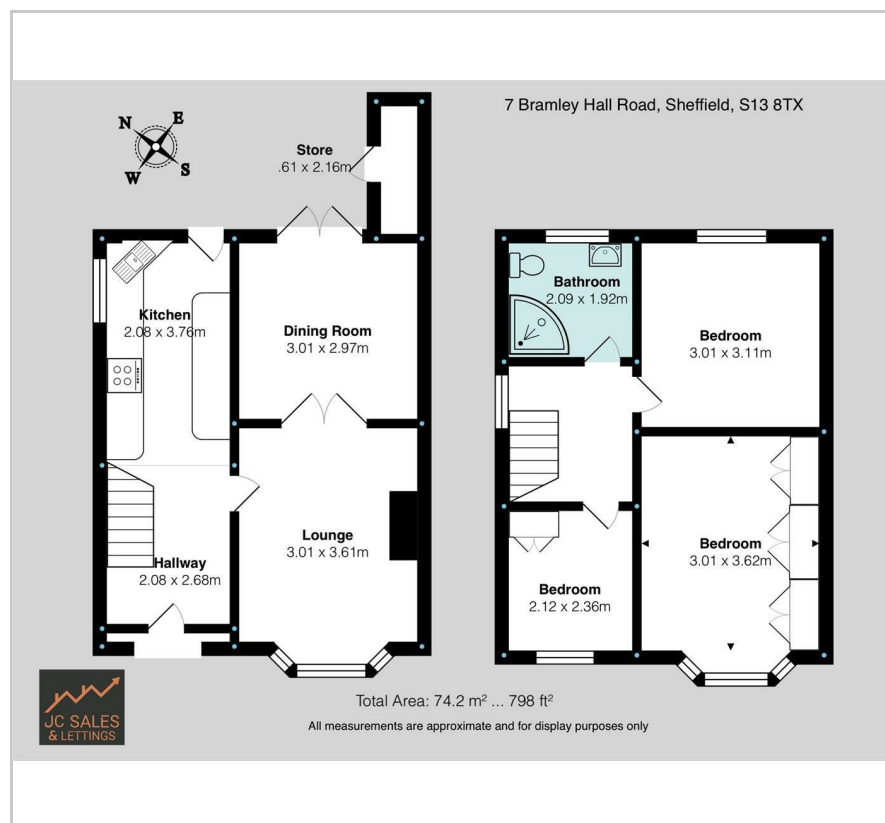


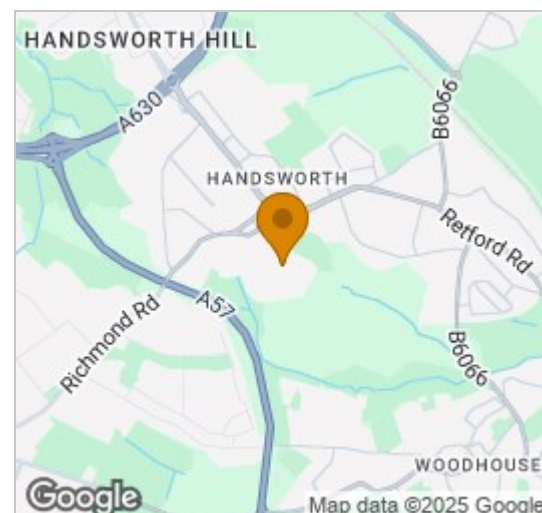
**7 Bramley Hall Road**  
Handsworth, Sheffield, S13 8TX  
Guide price £240,000



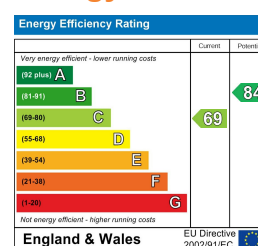
## Floor Plan



## Area Map



## Energy Efficiency Graph



## Viewing

Please contact our JC Sales and Lettings Office on 0114 4830038 if you wish to arrange a viewing appointment for this property or require further information.

- Traditional bay fronted semi
- Large corner plot
- Open plan lounge / dining room
- No upward chain
- Three bedrooms
- Guide Price £240,000-£250,000
- Block paved, gated driveway with plenty of parking
- Low maintenance rear garden with decking
- Ideal first time buy or family home
- Sought after location

\*\* GUIDE PRICE £240,000 - £250,000\*\*

A traditional 1930s semi, situated on a LARGE CORNER PLOT with GENEROUS OFF ROAD PARKING. This well proportioned FAMILY HOME would suit a FIRST TIME BUYER or FAMILY and is offered to the market with NO UPWARD CHAIN. LOW MAINTENANCE REAR GARDEN and OUTHOUSE WITH POWER. Master bedroom with FITTED WARDROBES. Potential to extend, subject to the relevant planning permission.

Occupying an ENVIABLE POSITION on this HIGHLY SOUGHT AFTER estate in Handsworth.

Close to an abundance of local amenities, public transport links, large supermarkets and the motorway network.

The property briefly comprises of entrance hall, fitted kitchen, open plan lounge, dining room, three bedrooms to the first floor and shower room/WC. Huge driveway and gardens to side and rear.

An internal inspection is highly recommended to appreciate the size and standard of accommodation on offer.

EPC Grade C.



These particulars, whilst believed to be accurate are set out as a general outline only for guidance and do not constitute any part of an offer or contract. Intending purchasers should not rely on them as statements of representation of fact, but must satisfy themselves by inspection or otherwise as to their accuracy. No person in this firm's employment has the authority to make or give any representation or warranty in respect of the property.

33 Townhead Road, Dore, Sheffield, S17 3GD Tel: 0114 483 0038  
Email: [sales@jc-salesandlettings.com](mailto:sales@jc-salesandlettings.com) [www.jc-salesandlettings.com](http://www.jc-salesandlettings.com)

JC SALES AND LETTINGS is a trading name of JC LETTINGS AND PROPERTY MANAGEMENT LIMITED, which is a company registered in England and Wales at 33 Townhead Road, Sheffield, S17 3GD. Company Number: 14135919 VAT Registration Number: 415 8145 04

