

Directions

Viewings

Viewings by arrangement only. Call 0114 2666300 to make an appointment.

EPC Rating

D

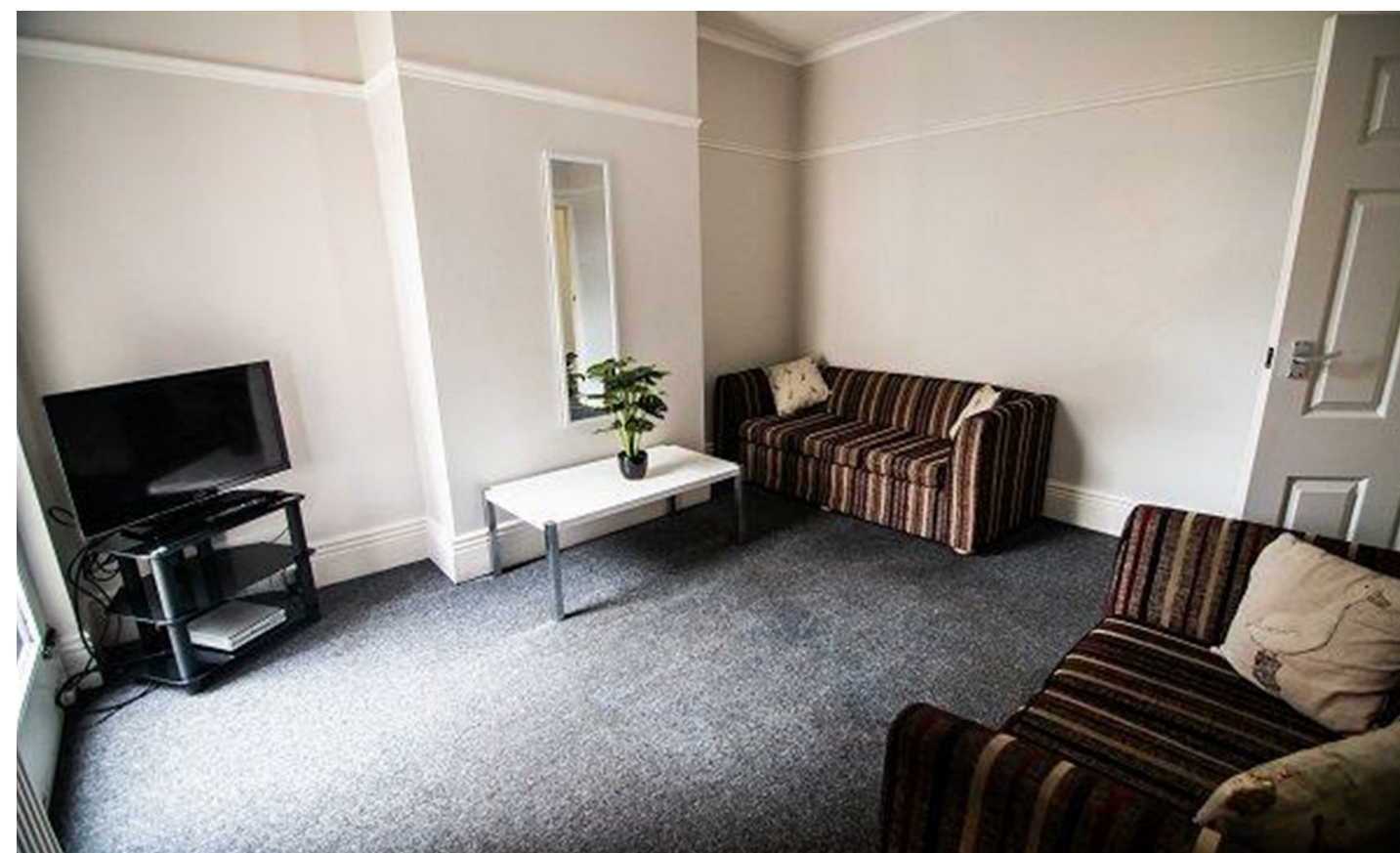
Energy Efficiency Rating		
	Current	Potential
Very energy efficient - lower running costs		
(92 plus) A		
(81-91) B		
(69-80) C		
(55-68) D		
(39-54) E		
(21-38) F		
(1-20) G		
Not energy efficient - higher running costs		
England & Wales		
EU Directive 2002/91/EC		

JC SALES & LETTINGS

Tel: 0114 483 0038

E-mail: sales@jc-salesandlettings.com

Website: www.jc-salesandlettings.com



12 Walton Road, Sheffield, S11 8RE

£81 Per week

- Student: £90 per person per week
- Bills included option includes gas, electricity, fibre internet, TV licence and water bills
- Perfectly placed for students studying at Sheffield Hallam University
- Excellent location, close to an abundance of local amenities
- Five very large bedrooms (no smaller bedroom)
- Bills included option available at £113 per person per week
- Situated just off Ecclesall Road
- Available for a group of 5
- Separate living room and kitchen
- EPC Grade D



12 Walton Road, Sheffield S11 8RE

*** STUDENT *** £90 PER PERSON PER WEEK *** BILLS INCLUDED OPTION AVAILABLE AT £113 PER PERSON PER WEEK
(Includes: Gas, electricity, fibre internet, water and TV licence) *** AVAILABLE FOR A GROUP OF 5 ***

A WELL LOCATED and LARGER THAN AVERAGE five bedroom mid terrace property with SEPARATE LOUNGE AND KITCHEN, situated just off ECCLESALL ROAD. Ideal for STUDENTS studying at SHEFFIELD HALLAM UNIVERSITY and close to an abundance of local amenities. In brief the accommodation comprises: large entrance hall, lounge, separate kitchen and large double bedroom to the ground floor. To the first floor there are two double bedrooms and two bathrooms/WCs. There are two double bedrooms to the second floor. An early viewing is highly recommended to avoid disappointment! EPC Grade D.



Council Tax Band: C

