



466 Shoreham Street

, Sheffield, S2 4FD

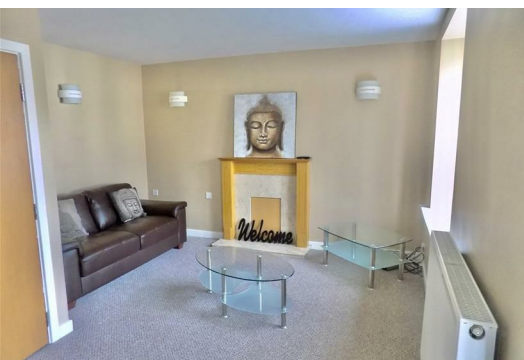
£97 Per week



*** LARGE OUTDOOR TERRACE TO THE TOP FLOOR *** £97 PER PERSON PER WEEK *** BILLS INCLUDED OPTION AVAILABLE AT £122 PER PERSON PER WEEK *** ACCOMMODATION OVER FOUR FLOOR *** AVAILABLE FOR A GROUP OF 4 SHARERS *** OFF ROAD PARKING FOR 2 VEHICLES *** AVAILABLE FROM 1ST JULY 2025 ***

Truly stunning and much larger than average, four bedroom, four storey property. This property is ideal for a group of four students, studying at Sheffield Hallam University and is situated conveniently for a host of local amenities and public transport links. In brief the accommodation comprises: entrance hall, garage, WC, utility room, large double bedroom and enclosed rear garden to the ground floor. Living room, large dining kitchen and study to the first floor. Two double bedrooms, one with en-suite and one family bathroom to the second floor. Large double bedroom with outdoor terrace to the second floor. Off road parking to the front of the property.

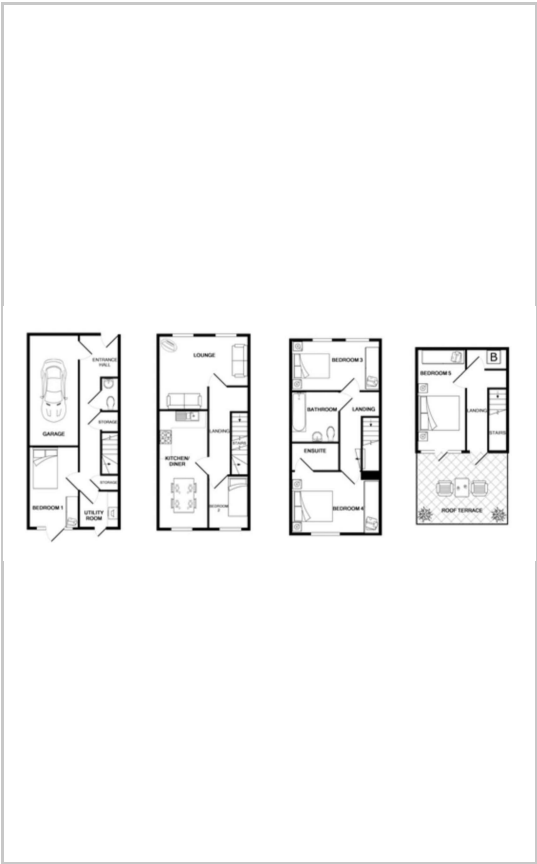
An internal inspection is highly recommended to appreciate the size and standard of accommodation on offer!
EPC Grade C.



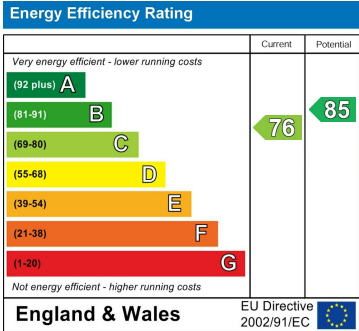
Area Map



Floor Plans



Energy Efficiency Graph



These particulars, whilst believed to be accurate are set out as a general outline only for guidance and do not constitute any part of an offer or contract. Intending purchasers should not rely on them as statements of representation of fact, but must satisfy themselves by inspection or otherwise as to their accuracy. No person in this firms employment has the authority to make or give any representation or warranty in respect of the property.