



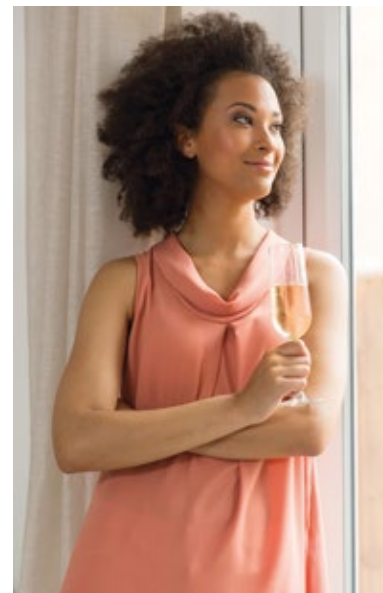
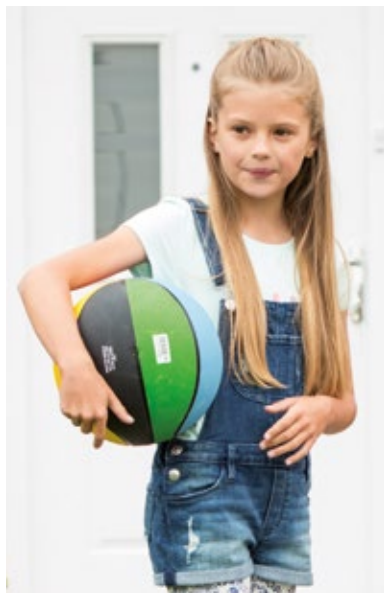
**Leven Mill
Glenrothes**

millerhomes

the place to be®

- 04 Living in Glenrothes
- 08 Welcome Home
- 10 Plot Information
- 12 Floorplans
- 40 The Miller Difference
- 46 Useful Contacts
- 48 How to Find Us

A new home. The start of a whole new chapter for you and your family. And for us, the part of our job where bricks and mortar becomes a place filled with activity and dreams and fun and love. We put a huge amount of care into the houses we build, but the story's not finished until we match them up with the right people. So, once you've chosen a Miller home, we'll do everything we can to make the rest of the process easy, even enjoyable. From the moment you make your decision until you've settled happily in, we'll be there to help.

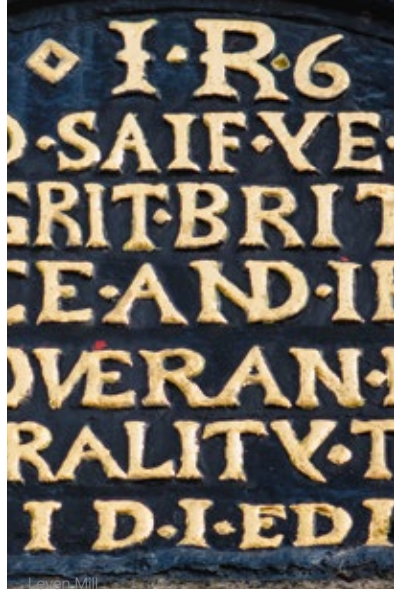




Living in Glenrothes

Quality of life is about the details of everyday living. From the little things, like knowing the nearest place to pick up a pint of milk, to more important matters like finding the right school or having a health centre nearby, you need to know that the community you're moving to will support you and your family, as well as being a pleasant place to live. So here's some useful information about the area around Leven Mill.

Just a few minutes walk from the shops and amenities of Glenrothes town centre, Leven Mill is also just half a mile from the A92, bringing it within around 40 minutes drive of Edinburgh, Dundee, Perth and St Andrews. Direct trains from Markinch station, two miles away, operate to Edinburgh, Dundee, Perth and Inverness, with Dundee just over half an hour away by rail. In addition, buses from Glenrothes Bus Station, ten minutes' walk away, serve St Andrews, Kirkcaldy, Dundee, Edinburgh, Glasgow, Perth and other local destinations, and the national cycle network, passing three-quarters of a mile from the development, provides routes to Dundee, St Andrews and Edinburgh.



Welcome home

Strategically located between Edinburgh, Dundee and Perth, this attractively landscaped selection of energy efficient two, three and four bedroom homes brings a highly desirable new neighbourhood into an outstanding location. Just a short walk from Glenrothes's major shopping and entertainment destination, and close to outstanding parks and countryside, it combines excellent transport links with comprehensive local amenities to offer both outstanding convenience and a real sense of place and community. Welcome to Leven Mill...

The artist's impressions (computer-generated graphics) have been prepared for illustrative purposes and are indicative only. They do not form part of any contract, or constitute a representation or warranty. External appearance may be subject to variation upon completion of the project.



Plot Information

- Vermont**
See Page 12
- Halston**
See Page 14
- Graton**
See Page 16
- Carlton DA**
See Page 18
- Fulton**
See Page 20
- Blackwood**
See Page 22
- Hazelwood**
See Page 24
- Leyton**
See Page 26
- Riverwood**
See Page 28
- Maplewood**
See Page 30
- Greenwood**
See Page 32
- Langwood**
See Page 34
- Lockwood**
See Page 36
- Cedarwood**
See Page 38



The artist's impressions (computer-generated graphics) have been prepared for illustrative purposes and are indicative only. They do not form part of any contract, or constitute a representation or warranty. External appearance may be subject to variation upon completion of the project. Please note that the site plan is not drawn to scale.

Overview

The contemporary, open design of the living room, with its integrated staircase, maximises the sense of space, and the built-in storage includes a useful cupboard in the principal bedroom. The second bedroom, ideal for guests, could also become a useful home office.

Ground Floor

Lounge
4.39m x 3.96m
14'5" x 13'0"

Kitchen
3.17m x 2.74m
10'5" x 9'0"

WC
1.08m x 2.45m
3'7" x 8'1"

First Floor

Principal Bedroom
4.39m x 2.51m
14'5" x 8'3"

Bedroom 2
4.40m x 2.15m
14'5" x 7'1"

Bathroom
2.07m x 1.94m
6'10" x 6'5"

Floor Space

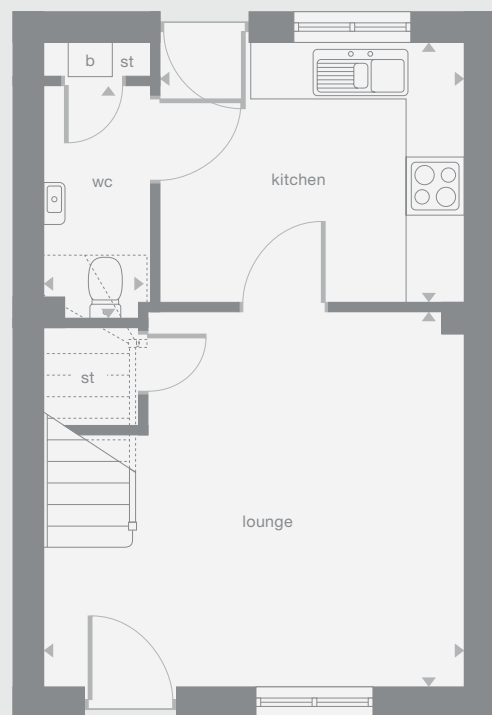
650 sq ft

b Boiler

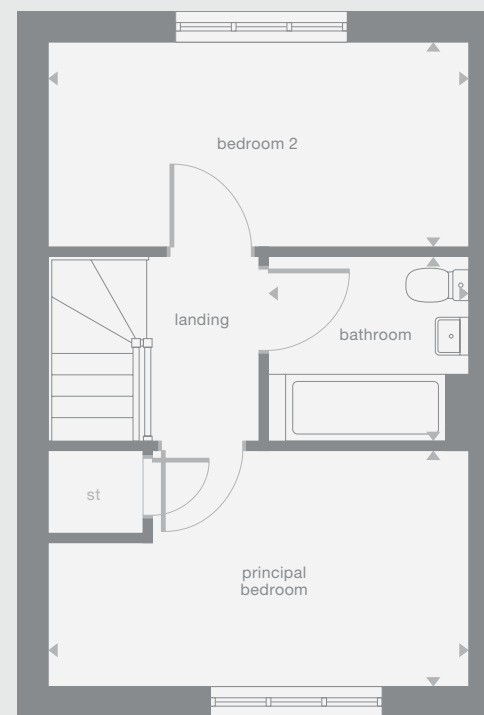
Plots may be a mirror image of the floor plans. Please see Development Sales Manager for details



Ground Floor



First Floor



Photography/CGI represents typical Miller Homes' interiors and exteriors. Please note elevational treatments may vary. All plans in this brochure are not drawn to scale and are for illustrative purposes only. Consequently, they do not form part of any contract. Room layouts are provisional and may be subject to alteration. Please refer to the 'Important Notice' section at the back of this brochure for more information.

Halston

Overview
 Designed for maximum practicality and convenience, the kitchen shares the ground floor with a living and dining room where french doors opening to the garden fill the interior with fresh, natural light. In addition to the storage space in the principal bedroom, there are useful cupboards in the hall and under the stairs.

Ground Floor	First Floor
Dining/Living 4.24m x 3.28m 13'11" x 10'9"	Principal Bedroom 4.27m x 2.48m 14'0" x 8'2"
Kitchen 2.27m x 3.44m 7'6" x 11'4"	Bedroom 2 2.00m x 3.46m 6'7" x 11'4"
WC 2.18m x 1.12m 7'2" x 3'8"	Bedroom 3 2.21m x 2.26m 7'3" x 7'5"
	Bathroom 2.11m x 1.93m 6'11" x 6'4"

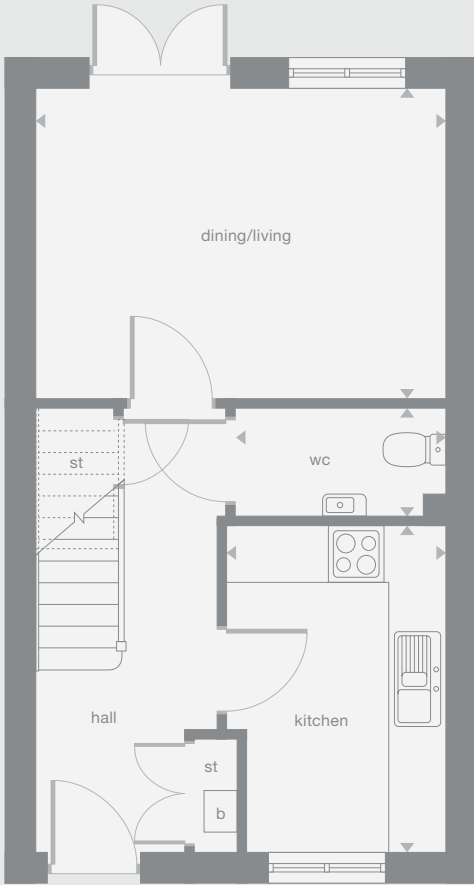
Floor Space
 750 sq ft

b Boiler

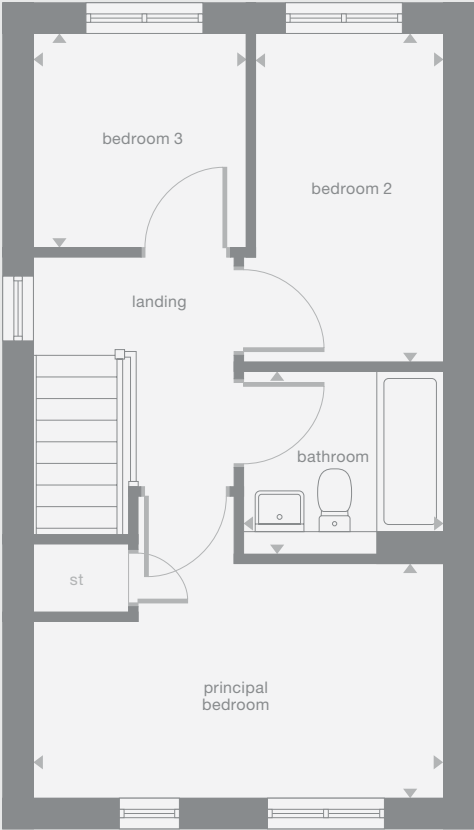
Plots may be a mirror image of the floor plans. Please see Development Sales Manager for details



Ground Floor



First Floor



Photography/CGI represents typical Miller Homes' interiors and exteriors. Please note elevational treatments may vary. All plans in this brochure are not drawn to scale and are for illustrative purposes only. Consequently, they do not form part of any contract. Room layouts are provisional and may be subject to alteration. Please refer to the 'Important Notice' section at the back of this brochure for more information.

Overview

Combining comfort with convenience, the bright living room opens through to a well-planned, ergonomic kitchen, presenting a welcoming and exceptionally practical setting for relaxing at home or entertaining guests. And with three bedrooms, one of them en-suite, a peaceful private retreat is always available.

Ground Floor

Lounge
3.71m x 4.51m
12'2" x 14'10"

Kitchen
3.56m x 3.08m
11'8" x 10'1"

WC
1.09m x 1.74m
3'7" x 5'9"

First Floor

Principal Bedroom
3.01m x 2.39m
9'11" x 7'10"

En-Suite
1.69m x 1.87m
5'7" x 6'2"

Bedroom 2
2.58m x 2.78m
8'6" x 9'2"

Bedroom 3
2.15m x 2.66m
7'1" x 8'9"

Bathroom
1.71m x 2.30m
5'7" x 7'7"

Floor Space

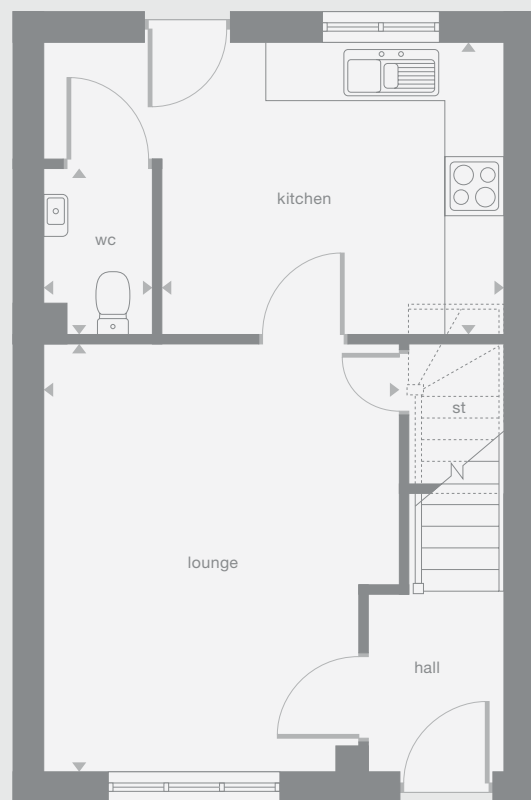
800 sq ft

b Boiler

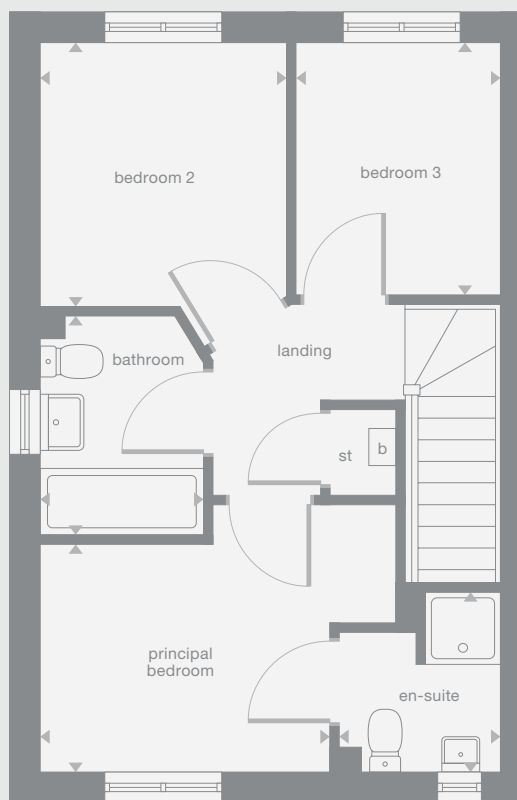
Plots may be a mirror image of the floor plans. Please see Development Sales Manager for details



Ground Floor



First Floor



Photography/CGI represents typical Miller Homes' interiors and exteriors. Please note elevational treatments may vary. All plans in this brochure are not drawn to scale and are for illustrative purposes only. Consequently, they do not form part of any contract. Room layouts are provisional and may be subject to alteration. Please refer to the 'Important Notice' section at the back of this brochure for more information.

Carlton DA

Overview

The impact of natural, welcoming light created by the triple-windowed, dual aspect lounge is further enhanced by the dual aspect kitchen with its french doors adding a focal point to the dining area. The principal bedroom, with its en-suite facilities, presents a private retreat with a dash of luxury.

Ground Floor

- Lounge**
3.05m x 5.39m
10'0" x 17'10"
- Kitchen/Dining**
2.24m x 5.39m
7'4" x 17'10"
- Laundry**
2.16m x 1.57m
7'1" x 5'2"
- WC**
1.10m x 2.04m
3'8" x 6'9"

First Floor

- Principal Bedroom**
3.08m x 3.18m
10'1" x 10'5"
- En-Suite**
1.96m x 1.69m
6'5" x 5'7"
- Bedroom 2**
2.46m x 2.89m
8'1" x 9'6"
- Bedroom 3**
2.46m x 2.43m
8'1" x 8'0"
- Bathroom**
1.87m x 2.11m
6'2" x 6'11"

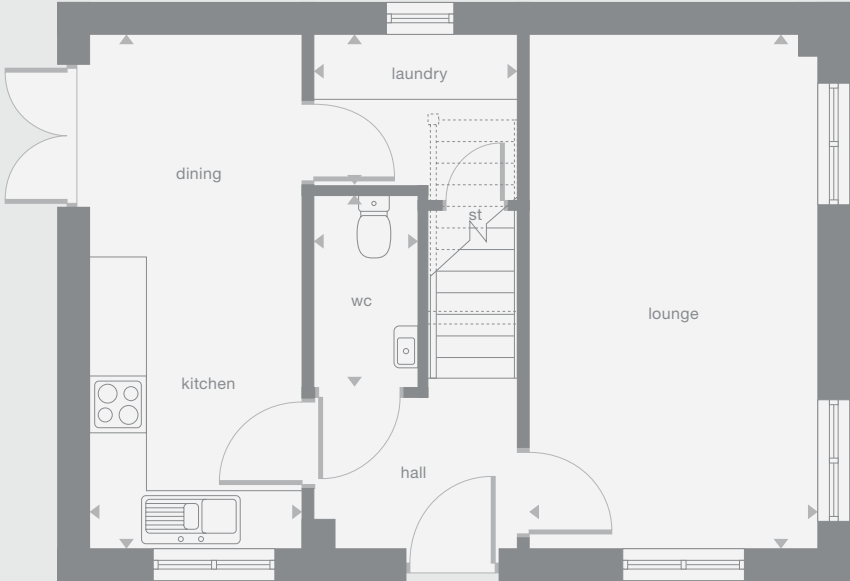
Floor Space

897 sq ft

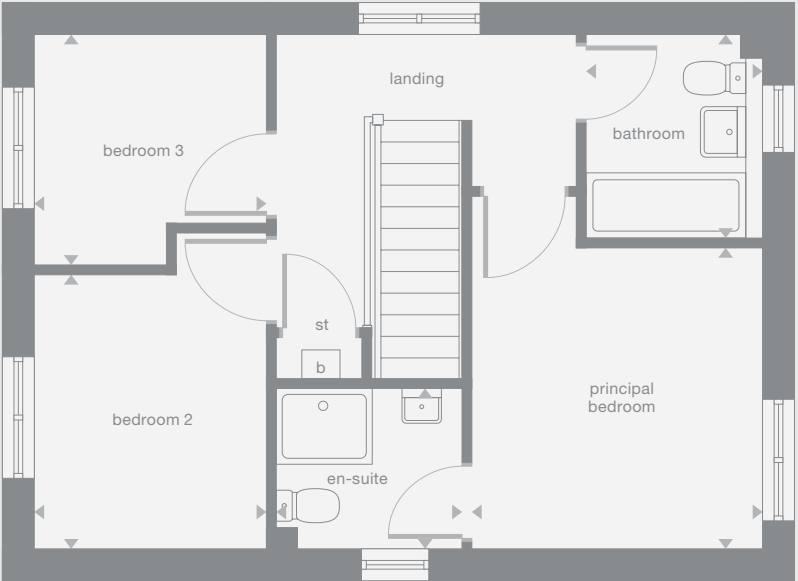
b Boiler
Plots may be a mirror image of the floor plans. Please see Development Sales Manager for details



Ground Floor



First Floor



Photography/CGI represents typical Miller Homes' interiors and exteriors. Please note elevational treatments may vary. All plans in this brochure are not drawn to scale and are for illustrative purposes only. Consequently, they do not form part of any contract. Room layouts are provisional and may be subject to alteration. Please refer to the 'Important Notice' section at the back of this brochure for more information.

Overview

The lounge opens, through a separate lobby, into a beautifully designed kitchen and dining room where french doors keep the room light and airy, and make outdoor meals a tempting option. One of the three bedrooms features an en-suite shower, and there is a useful storage cupboard on the landing.

Ground Floor

Lounge
3.98m x 3.87m
13'1" x 12'8"

Kitchen/Dining
5.05m x 2.99m
16'7" x 9'10"

WC
1.88m x 1.17m
6'2" x 3'10"

First Floor

Principal Bedroom
2.88m x 3.59m
9'6" x 11'10"

En-Suite
2.29m x 1.42m
7'6" x 4'8"

Bedroom 2
2.92m x 2.92m
9'7" x 9'7"

Bedroom 3
2.26m x 2.43m
7'5" x 8'0"

Bathroom
2.10m x 1.70m
6'11" x 5'7"

Floor Space

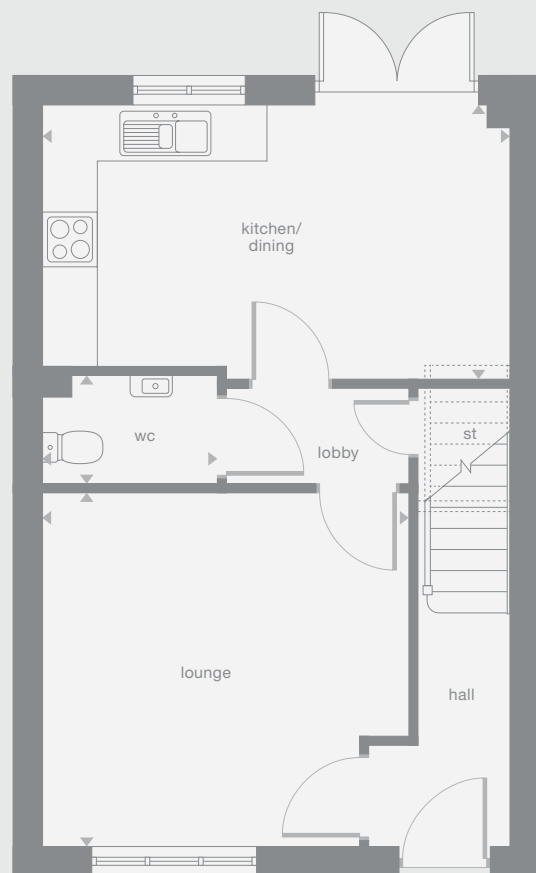
900 sq ft

b Boiler

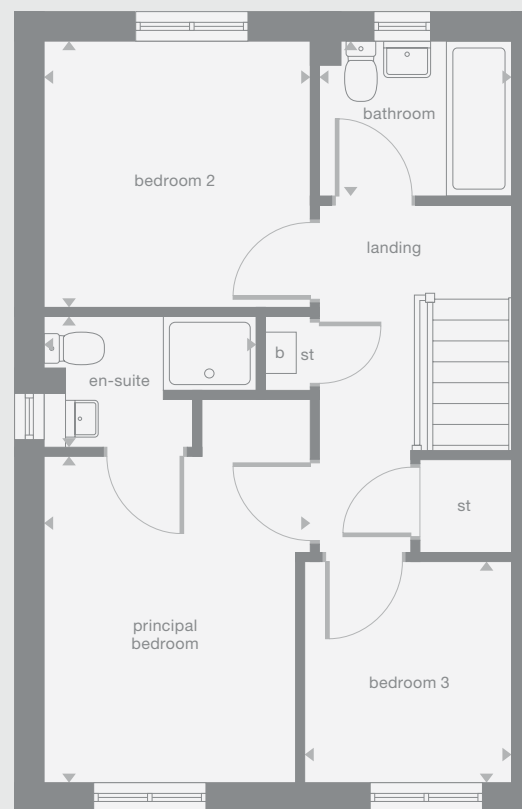
Plots may be a mirror image of the floor plans. Please see Development Sales Manager for details



Ground Floor



First Floor



Photography/CGI represents typical Miller Homes' interiors and exteriors. Please note elevational treatments may vary. All plans in this brochure are not drawn to scale and are for illustrative purposes only. Consequently, they do not form part of any contract. Room layouts are provisional and may be subject to alteration. Please refer to the 'Important Notice' section at the back of this brochure for more information.

Blackwood

Overview

The inviting lounge is complemented by a bright kitchen, where french doors opening to the garden add an airy, open ambience and a separate laundry area leaves the social space free for dining and conversation. The four bedrooms include a superb en-suite principal bedroom.

Ground Floor

Lounge
3.00m x 4.62m
9'10" x 15'2"

Kitchen/Family/Dining
5.55m x 3.72m
18'3" x 12'3"

Laundry
1.26m x 1.92m
4'2" x 6'4"

WC
1.09m x 2.03m
3'7" x 6'8"

First Floor

Principal Bedroom
2.83m x 3.85m
9'4" x 12'8"

En-Suite
2.51m x 1.21m
8'3" x 4'0"

Bedroom 2
2.61m x 3.27m
8'7" x 10'9"

Bedroom 3
2.51m x 3.20m
8'3" x 10'6"

Bedroom 4
2.93m x 2.30m
9'8" x 7'7"

Bathroom
1.78m x 1.96m
5'10" x 6'5"

Floor Space

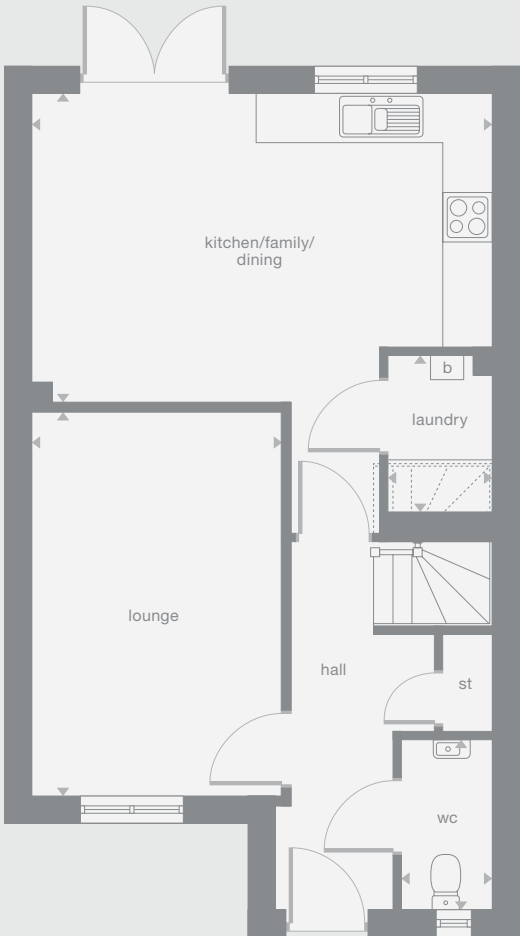
1,088 sq ft

b Boiler

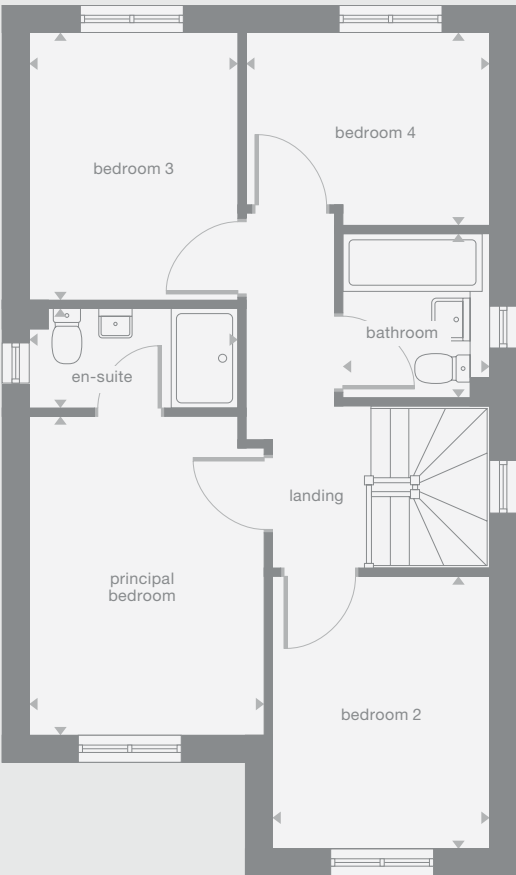
Plots may be a mirror image of the floor plans. Please see Development Sales Manager for details



Ground Floor



First Floor



Photography/CGI represents typical Miller Homes' interiors and exteriors. Please note elevational treatments may vary. All plans in this brochure are not drawn to scale and are for illustrative purposes only. Consequently, they do not form part of any contract. Room layouts are provisional and may be subject to alteration. Please refer to the 'Important Notice' section at the back of this brochure for more information.

Hazelwood

Overview

The lounge opens on to a light-filled family kitchen, a beautifully designed space with feature french doors adding extra appeal to the dining area. With a separate laundry, a useful cupboard in the fourth bedroom and an en-suite principal bedroom, this is a practical, attractive home.

Ground Floor

- Lounge**
3.31m x 4.92m
10'11" x 16'2"
- Kitchen/Dining**
5.39m x 3.18m
17'9" x 10'6"
- Laundry**
2.06m x 1.95m
6'9" x 6'5"
- WC**
2.06m x 1.08m
6'9" x 3'7"

First Floor

- Principal Bedroom**
4.38m x 2.89m
14'5" x 9'6"
- En-Suite**
2.06m x 2.54m
6'9" x 8'4"
- Bedroom 2**
3.73m x 2.60m
12'3" x 8'7"
- Bedroom 3**
3.73m x 2.60m
12'3" x 8'7"
- Bedroom 4**
3.05m x 2.64m
10'0" x 8'8"
- Bathroom**
1.92m x 2.22m
6'4" x 7'4"

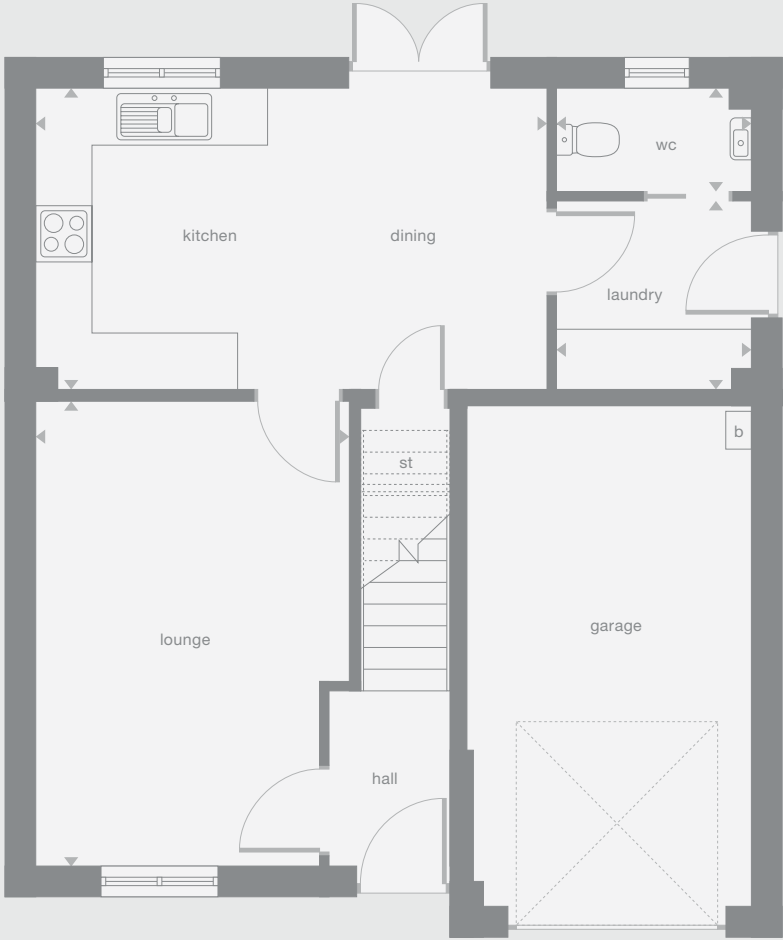
Floor Space

1,150 sq ft

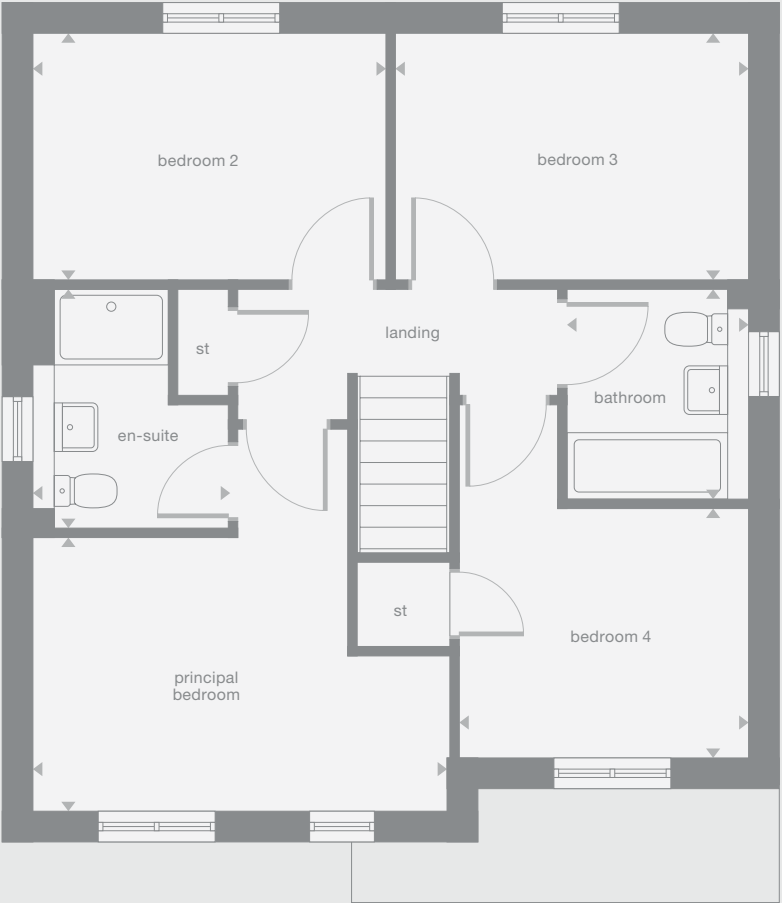
b Boiler
Plots may be a mirror image of the floor plans. Please see Development Sales Manager for details



Ground Floor



First Floor



Photography/CGI represents typical Miller Homes' interiors and exteriors. Please note elevational treatments may vary. All plans in this brochure are not drawn to scale and are for illustrative purposes only. Consequently, they do not form part of any contract. Room layouts are provisional and may be subject to alteration. Please refer to the 'Important Notice' section at the back of this brochure for more information.

Leyton

Overview
 The stylishly ergonomic walkthrough kitchen and the bright dining room, opening out to the garden, makes innovative use of space to create an inspiring setting for family evenings, as well as an ideal backdrop to relaxed entertaining. The lounge shares the first floor with the en-suite principal bedroom.

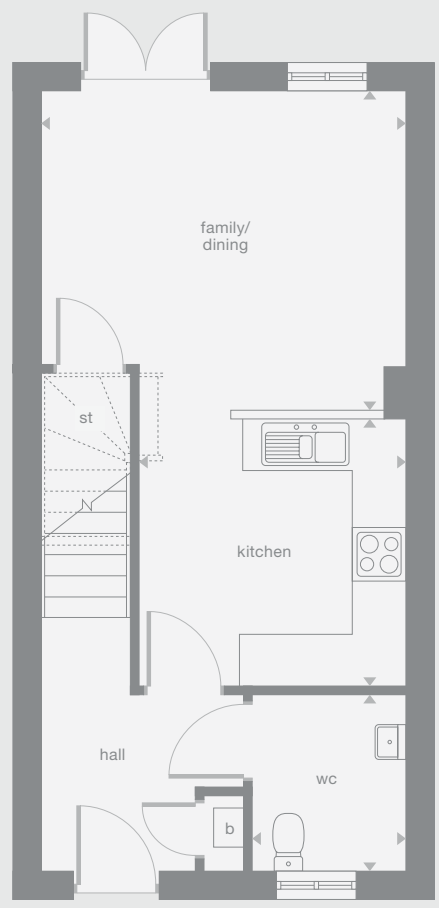
Ground Floor	First Floor	Second Floor
Kitchen 3.01m x 3.07m 9'11" x 10'1"	Lounge 4.11m x 2.88m 13'6" x 9'6"	Bedroom 2 4.12m x 3.14m 13'6" x 10'4"
Family/Dining 4.11m x 3.66m 13'6" x 12'0"	Principal Bedroom 4.12m x 3.12m 13'6" x 10'3"	Bedroom 3 4.15m x 2.91m 13'8" x 9'7"
WC 1.70m x 2.01m 5'7" x 6'7"	En-Suite 1.38m x 1.71m 4'6" x 5'8"	Bathroom 1.53m x 2.70m 5'0" x 8'10"

Floor Space
 1,202 sq ft

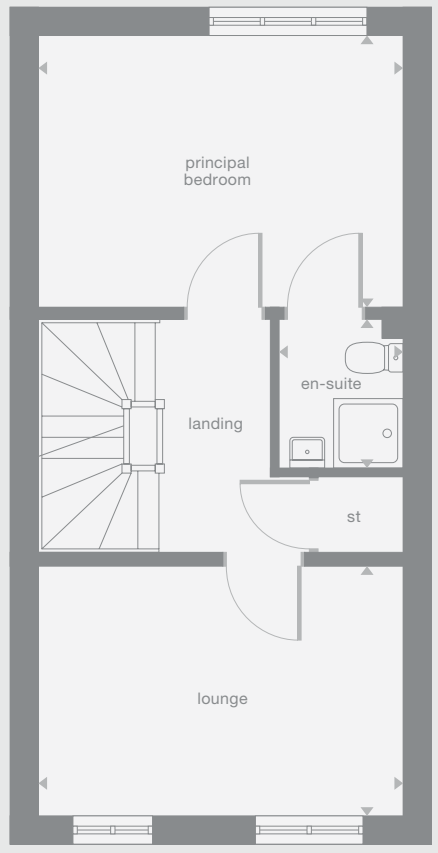


b Boiler
 Plots may be a mirror image of the floor plans. Please see Development Sales Manager for details

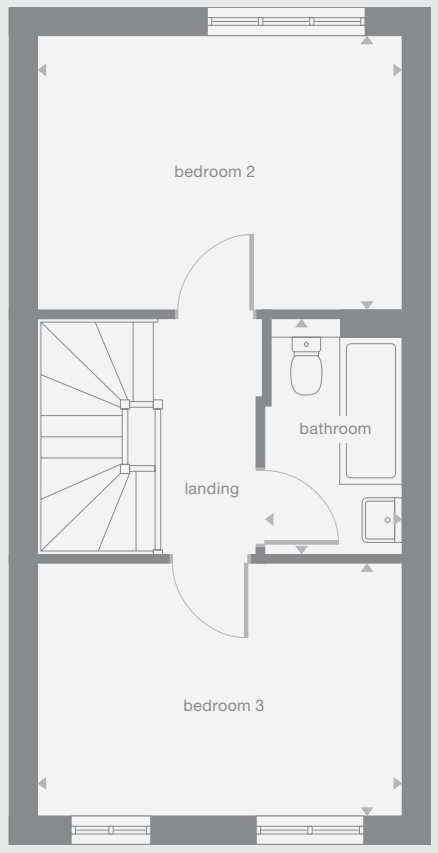
Ground Floor



First Floor



Second Floor



Photography/CGI represents typical Miller Homes' interiors and exteriors. Please note elevational treatments may vary. All plans in this brochure are not drawn to scale and are for illustrative purposes only. Consequently, they do not form part of any contract. Room layouts are provisional and may be subject to alteration. Please refer to the 'Important Notice' section at the back of this brochure for more information.

Riverwood

Overview

The open, flexible layout of the kitchen and dining room, with its french doors and convenient self-contained laundry space, offers both a relaxed family area and a convivial backdrop to entertaining. The principal bedroom is en-suite, and the fourth bedroom could become a useful home office.

Ground Floor

Lounge
3.57m x 4.56m
11'9" x 15'0"

Kitchen/Family/Dining
6.47m x 4.51m
21'3" x 14'10"

Laundry
1.59m x 0.97m
5'3" x 3'2"

WC
1.07m x 2.09m
3'6" x 6'10"

First Floor

Principal Bedroom
3.52m x 3.03m
11'7" x 9'11"

En-Suite
2.41m x 1.21m
7'11" x 4'0"

Bedroom 2
2.84m x 3.78m
9'4" x 12'5"

Bedroom 3
3.52m x 2.48m
11'7" x 8'2"

Bedroom 4
2.84m x 2.09m
9'4" x 6'10"

Bathroom
2.41m x 2.16m
7'11" x 7'1"

Floor Space

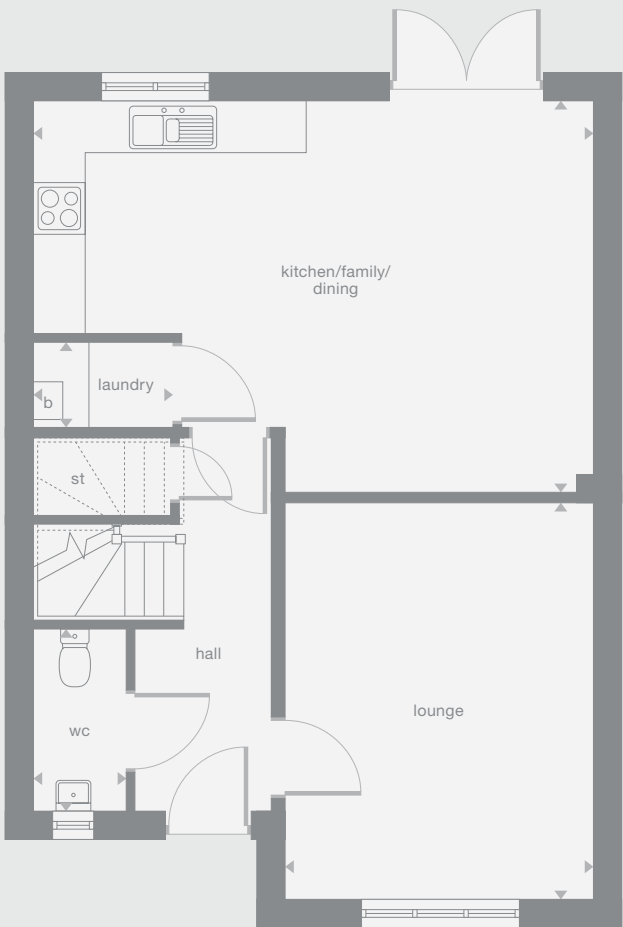
1,219 sq ft

b Boiler

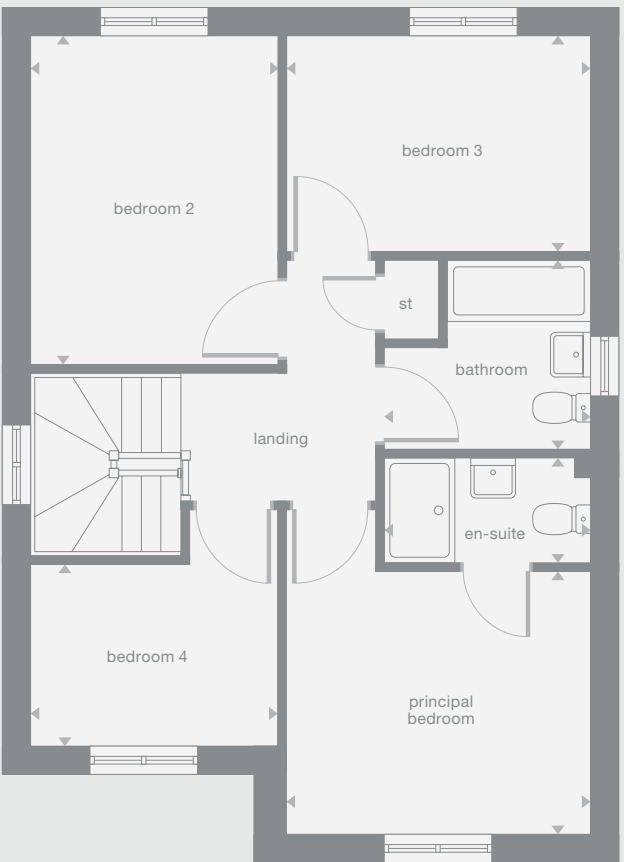
Plots may be a mirror image of the floor plans. Please see Development Sales Manager for details



Ground Floor



First Floor



how will you use your new home?

Photography/CGI represents typical Miller Homes' interiors and exteriors. Please note elevational treatments may vary. All plans in this brochure are not drawn to scale and are for illustrative purposes only. Consequently, they do not form part of any contract. Room layouts are provisional and may be subject to alteration. Please refer to the 'Important Notice' section at the back of this brochure for more information.

Maplewood

Overview

With twin windows and central french doors, the kitchen and dining room maximises the benefits of the garden to present an adaptable, comfortable setting for family life. The lounge features a stylish bay window, and the delightful principal bedroom includes an en-suite shower and a sumptuous dressing area.

Ground Floor

Lounge
3.00m x 4.72m
9'10" x 15'6"

Family/Dining/Kitchen
8.14m x 2.80m
26'9" x 9'2"

Laundry
1.77m x 1.28m
5'10" x 4'3"

WC
1.46m x 1.77m
4'10" x 5'10"

First Floor

Principal Bedroom
5.01m x 2.80m
16'6" x 9'2"

En-Suite
2.63m x 1.23m
8'8" x 4'0"

Dressing
2.63m x 1.38m
8'8" x 4'7"

Bedroom 2
3.02m x 4.01m
9'11" x 13'2"

Bedroom 3
2.43m x 4.22m
8'0" x 13'10"

Bedroom 4
3.06m x 3.00m
10'1" x 9'10"

Bathroom
2.44m x 3.00m
8'0" x 9'10"

Floor Space

1,297 sq ft

b Boiler

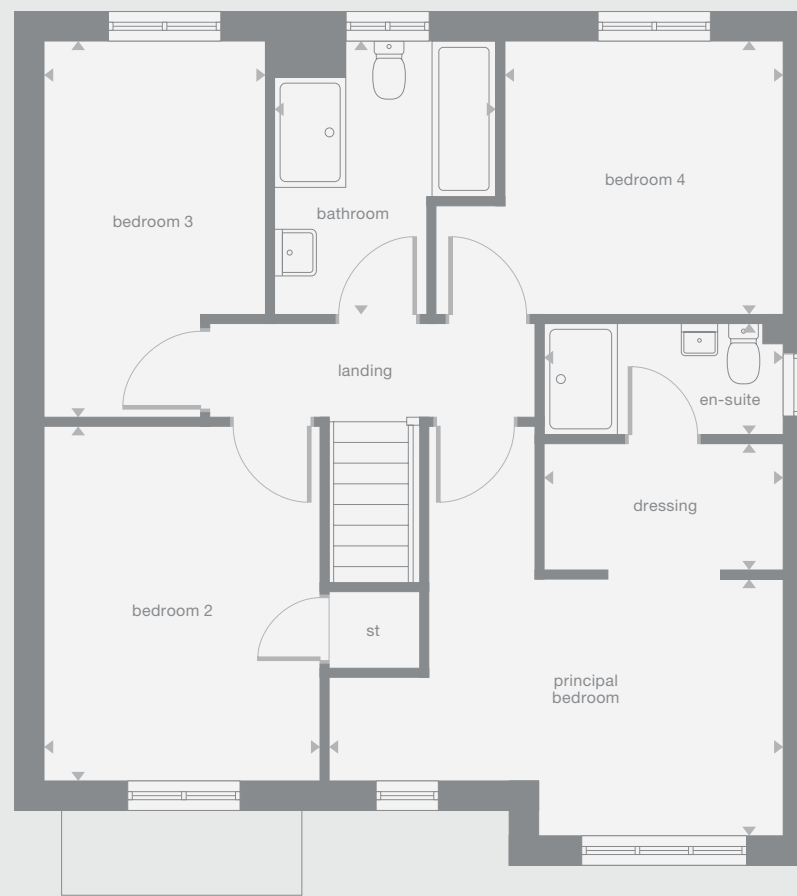
Plots may be a mirror image of the floor plans. Please see Development Sales Manager for details



Ground Floor



First Floor



Photography/CGI represents typical Miller Homes' interiors and exteriors. Please note elevational treatments may vary. All plans in this brochure are not drawn to scale and are for illustrative purposes only. Consequently, they do not form part of any contract. Room layouts are provisional and may be subject to alteration. Please refer to the 'Important Notice' section at the back of this brochure for more information.

Greenwood

Overview

French doors set into a feature window add a premium touch to the light, airy family kitchen and dining room, a superb setting for family life that shares the ground floor with a more formal bay-windowed lounge. A gallery landing leads to four bedrooms, one of them en-suite with a walk-through dressing area.

Ground Floor

- Lounge
3.57m x 5.24m
11'9" x 17'2"
- Kitchen/Dining/Family
4.97m x 5.80m
16'4" x 19'0"
- Laundry
3.01m x 1.27m
9'11" x 4'2"
- WC
2.16m x 1.12m
7'1" x 3'8"

First Floor

- Principal Bedroom
2.94m x 3.98m
9'8" x 13'1"
- En-Suite
2.51m x 1.48m
8'3" x 4'11"
- Dressing
2.51m x 1.33m
8'3" x 4'4"
- Bedroom 2
3.57m x 3.79m
11'9" x 12'6"

- Bedroom 3
2.56m x 4.04m
8'5" x 13'3"
- Bedroom 4
2.80m x 2.92m
9'2" x 9'7"
- Bathroom
2.56m x 2.22m
8'5" x 7'3"

Floor Space

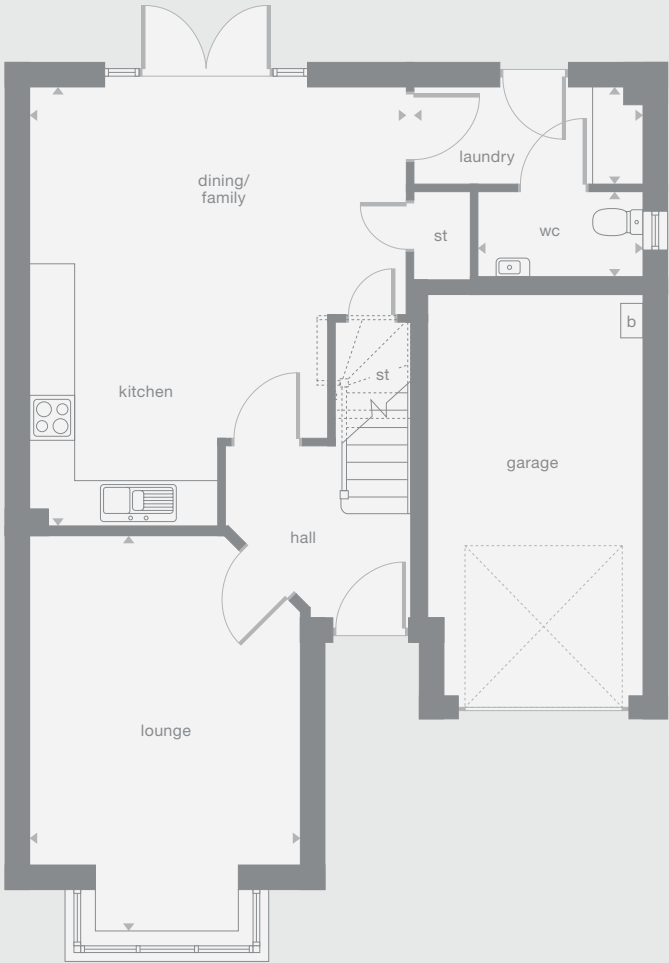
1,342 sq ft

b Boiler

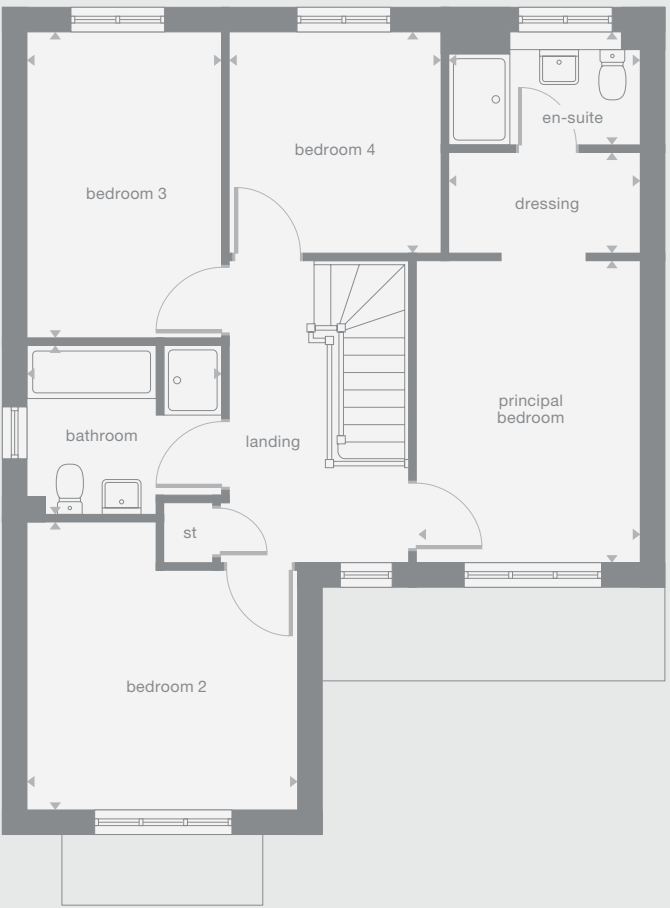
Plots may be a mirror image of the floor plans. Please see Development Sales Manager for details



Ground Floor



First Floor



Photography/CGI represents typical Miller Homes' interiors and exteriors. Please note elevational treatments may vary. All plans in this brochure are not drawn to scale and are for illustrative purposes only. Consequently, they do not form part of any contract. Room layouts are provisional and may be subject to alteration. Please refer to the 'Important Notice' section at the back of this brochure for more information.

Langwood

Overview

A bay window and double doors give the lounge a classic elegance that complements the bright, relaxed family kitchen and dining room with its feature french doors. There is a separate laundry room and a study, and the four bedrooms include a luxurious L-shaped en-suite principal bedroom.

Ground Floor

- Lounge**
3.04m x 5.51m
10'0" x 18'1"
- Kitchen/Dining/Family**
7.97m x 3.01m
26'2" x 9'11"
- Laundry**
1.64m x 1.71m
5'5" x 5'7"
- Study**
2.65m x 2.33m
8'9" x 7'8"
- WC**
2.65m x 1.24m
8'9" x 4'1"

First Floor

- Principal Bedroom**
5.30m x 2.96m
17'5" x 9'9"
- En-Suite**
1.52m x 2.20m
5'0" x 7'3"
- Dressing**
1.44m x 1.49m
4'9" x 4'11"
- Bedroom 2**
2.56m x 3.85m
8'5" x 12'8"
- Bedroom 3**
2.56m x 3.79m
8'5" x 12'5"
- Bedroom 4**
2.51m x 2.38m
8'3" x 7'10"
- Bathroom**
2.69m x 1.91m
8'10" x 6'3"

Floor Space

1,349 sq ft

b Boiler

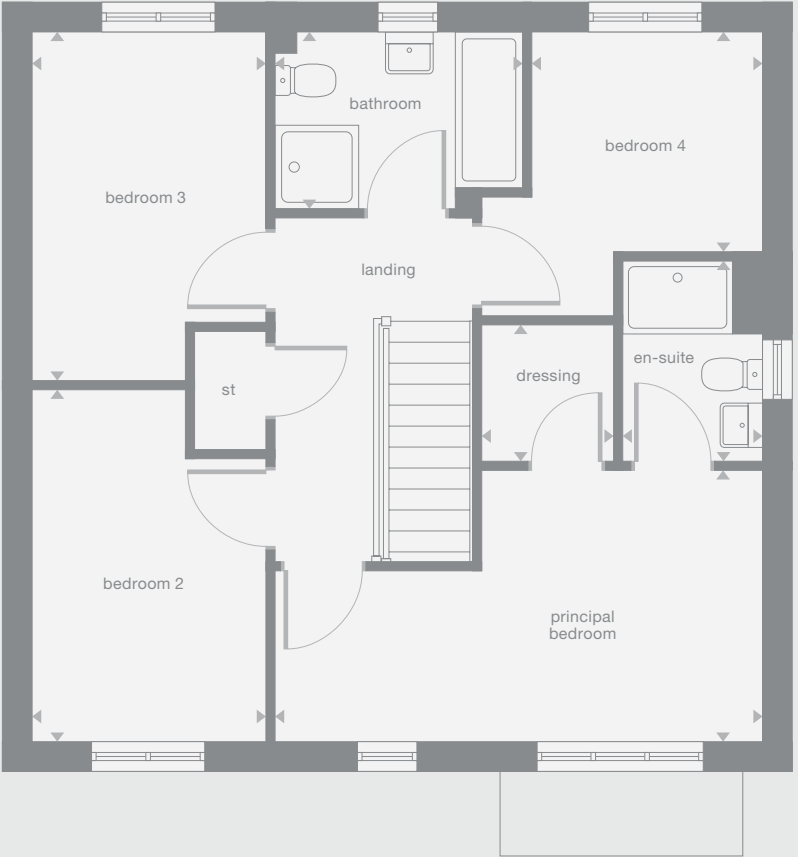
Plots may be a mirror image of the floor plans. Please see Development Sales Manager for details



Ground Floor



First Floor



Photography/CGI represents typical Miller Homes' interiors and exteriors. Please note elevational treatments may vary. All plans in this brochure are not drawn to scale and are for illustrative purposes only. Consequently, they do not form part of any contract. Room layouts are provisional and may be subject to alteration. Please refer to the 'Important Notice' section at the back of this brochure for more information.

Lockwood

Overview

The elegantly proportioned exterior reflects the immense prestige of this exceptional family home. From the lounge's bay window to the feature staircase with half landing, from the french doors of the dining room to the en-suite showers in two of the four bedrooms, comfort is combined with visual appeal.

Ground Floor

Lounge
3.63m x 5.85m
11'11" x 19'3"

Kitchen/Dining/Family
6.20m x 4.22m
20'4" x 13'10"

Laundry
1.81m x 2.73m
6'0" x 9'0"

WC
1.81m x 1.38m
6'0" x 4'7"

First Floor

Principal bedroom
3.46m x 4.01m
11'4" x 13'2"

En-Suite 1
1.98m x 1.67m
6'6" x 5'6"

Bedroom 2
3.49m x 3.17m
11'5" x 10'5"

En-Suite 2
2.33m x 1.91m
7'8" x 6'3"

Bedroom 3
2.47m x 3.17m
8'1" x 10'5"

Bedroom 4
2.47m x 2.93m
8'2" x 9'8"

Bathroom
1.95m x 3.17m
6'5" x 10'5"

Floor Space

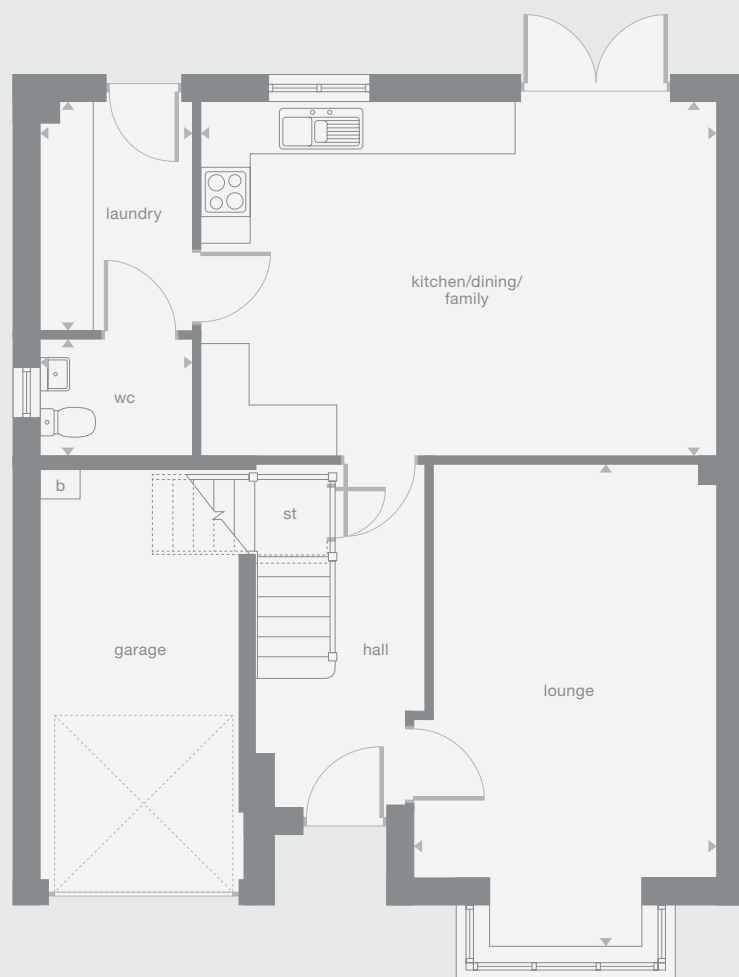
1,446 sq ft

b Boiler

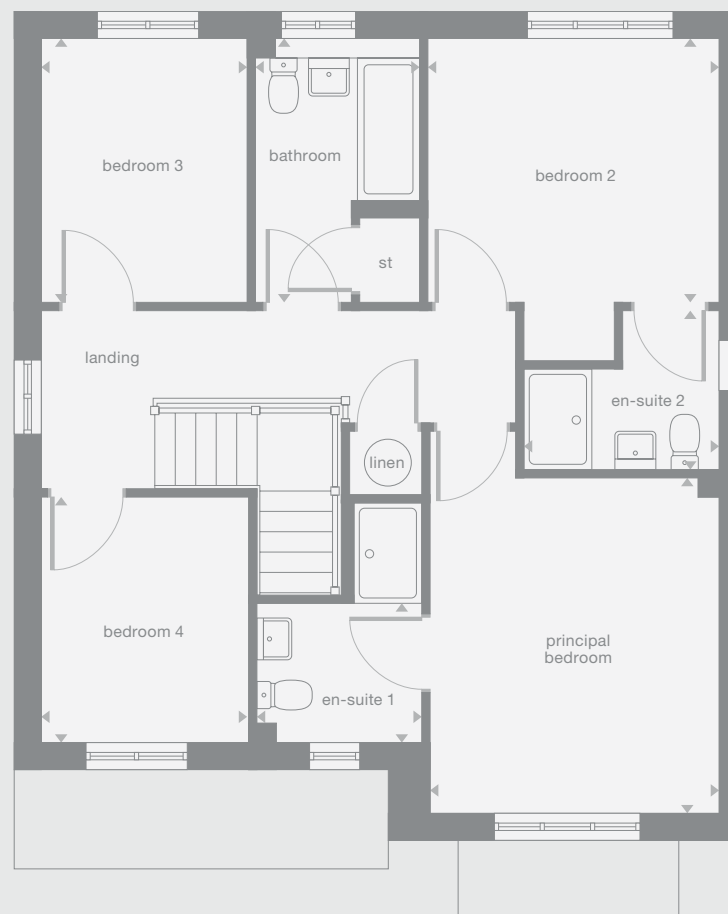
Plots may be a mirror image of the floor plans. Please see Development Sales Manager for details



Ground Floor



First Floor



your home
your choice...

Photography/CGI represents typical Miller Homes' interiors and exteriors. Please note elevational treatments may vary. All plans in this brochure are not drawn to scale and are for illustrative purposes only. Consequently, they do not form part of any contract. Room layouts are provisional and may be subject to alteration. Please refer to the 'Important Notice' section at the back of this brochure for more information.

Cedarwood

Overview

Extending the entire width of this substantial home, the bright family kitchen and garden dining room presents an inspiring hub for everyday life. There is a private study, and the feature staircase and landing leads to four bedrooms, two of them en-suite and one with a generously sized dressing room.

Ground Floor

- Lounge
3.40m x 4.36m
11'2" x 14'4"
- Kitchen
3.36m x 3.25m
11'0" x 10'8"
- Family/Dining
5.22m x 2.99m
17'2" x 9'10"
- Study
3.57m x 2.24m
11'9" x 7'4"
- Laundry
2.11m x 1.73m
6'11" x 5'8"
- WC
1.16m x 2.00m
3'10" x 6'7"

First Floor

- Principal Bedroom
3.77m x 3.49m
12'5" x 11'5"
- Dressing
2.11m x 2.00m
6'11" x 6'7"
- En-Suite 1
2.11m x 1.62m
6'11" x 5'4"
- Bedroom 2
2.88m x 4.31m
9'6" x 14'2"
- En-Suite 2
1.74m x 1.61m
5'9" x 5'4"
- Bedroom 3
2.49m x 3.65m
8'2" x 12'0"
- Bedroom 4
2.88m x 3.06m
9'5" x 10'1"
- Bathroom
3.00m x 1.92m
9'10" x 6'4"

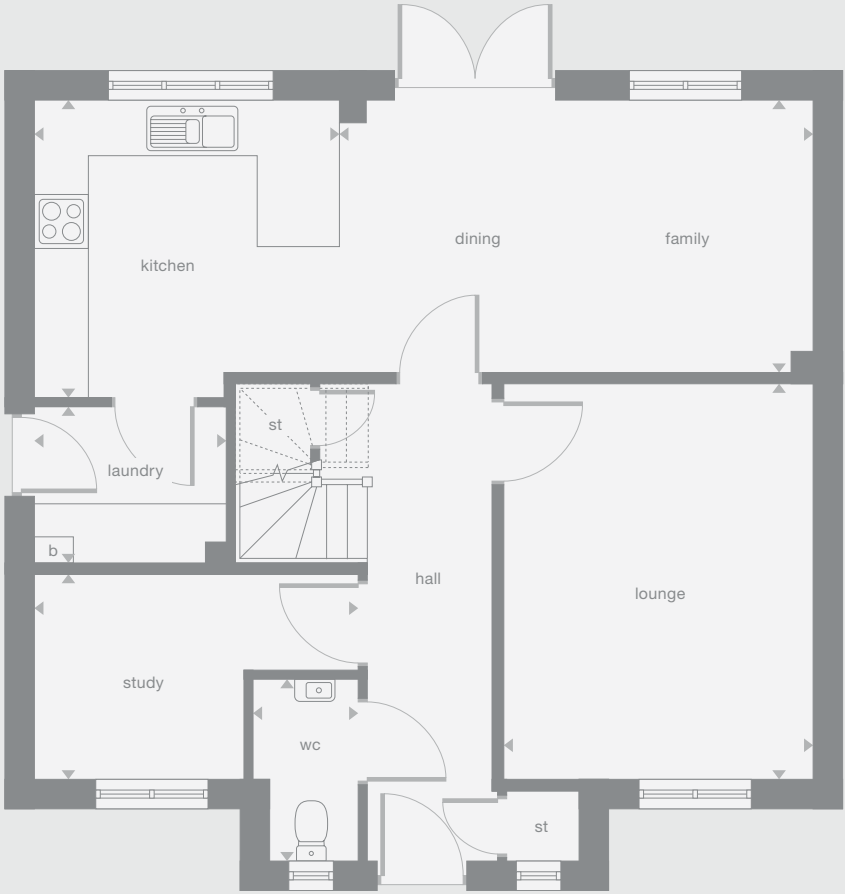
Floor Space

1,448 sq ft

b Boiler
Plots may be a mirror image of the floor plans. Please see Development Sales Manager for details



Ground Floor



First Floor



Photography/CGI represents typical Miller Homes' interiors and exteriors. Please note elevational treatments may vary. All plans in this brochure are not drawn to scale and are for illustrative purposes only. Consequently, they do not form part of any contract. Room layouts are provisional and may be subject to alteration. Please refer to the 'Important Notice' section at the back of this brochure for more information.

The Miller Difference

The Miller Difference
Every home we build is the start of an adventure. For more than 85 years we've watched people stamp their individual personalities on the homes we build. What we create is your starting point. Our job is to make sure it's the best one possible.

Shaped around you
For more than three generations, we've been listening to our customers. We know what you expect: the highest quality materials, the most skilled workmanship, ready to be shaped around your lifestyle.

Built on trust
Figures and statistics matter. We have, for example, a five star rating for Customer Satisfaction, the best possible, from the Home Builders Federation.

Even more important, though, is the feedback we get from our customers. After we've been with them on the journey from their first enquiry to settling into their new home, well over 90% say they would recommend us. That's the real measure of the trust they place in us.

Helping where we can
You might already have a clear picture of life in your new home. Or it might be a blank canvas. Either way, getting there is an exciting journey of discovery. And we're here to help.

From the first time you contact us, whether by phone, video call or a tour of a show home, we'll be listening carefully. Only you know what you want, but we'll be working with you to achieve it.

And we'll still be on hand, ready to help, long after you move in, quietly sharing your pride and satisfaction.

Pushing up standards
From beautiful locations and superb architectural design to meticulous construction work and exceptional finishes, our expertise is widely acknowledged. Our award-winning developments embrace state-of-the-art technologies and green thinking, but we never lose sight of the importance of craftsmanship. Every step is subject to rigorous Quality Assurance checks, and we reward our highly trained teams for safe and careful practice.

A smooth customer journey
Our award-winning service reflects the same high standards. As we guide you through your choices, decades of experience inform every step. So you can relax and enjoy the journey, knowing you have all the information you need.

With you every step of the way
After meeting your Development Sales Manager, who will help you choose and buy your new home, you'll be introduced to your Site Manager, who will be responsible for every aspect of the building work. They'll both be happy to answer any questions you have.

Fully involved
Your new home will quickly be moulded to your personal choices. So will our service. Once you tell us how you want to keep in touch, whether by phone, text, email, our custom designed app or via our website, that's how we'll keep you regularly updated and informed. You'll be able to access all the records of meetings, and see what happens next.

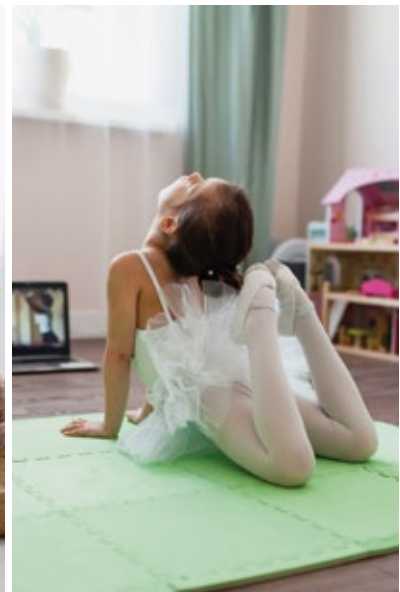
Make it your own
Even before you move in, there's the excitement of planning your interior. Choosing tiles and worktops, making decisions about appliances. We'll help wherever we can. Our Visualiser, for example, can help you make selections online then see them for real in the Sales Centre. Already, it's becoming your own, personal, space.

At a safe time during building, we'll invite you to visit your new home for a Progress Meeting where you can see the craftsmanship and attention to detail for yourself before it's covered up by fittings and finishes.

A place to grow
For us, the mark of success is seeing every home become unique, an individual reflection of the people who live there, and watching it become part of a thriving community.

By creating sustainable homes, in sustainable communities, we're helping to build a sustainable future for everyone. Including ourselves.

your home
your way...

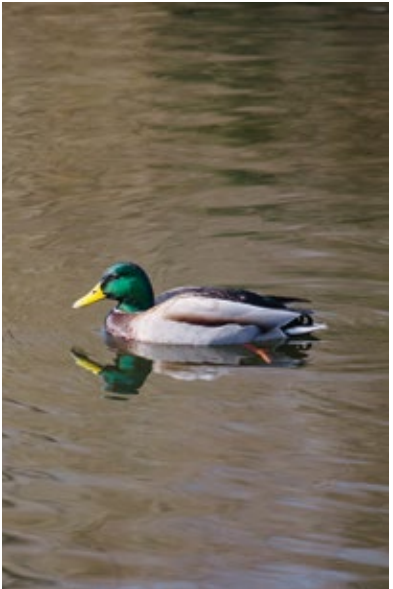
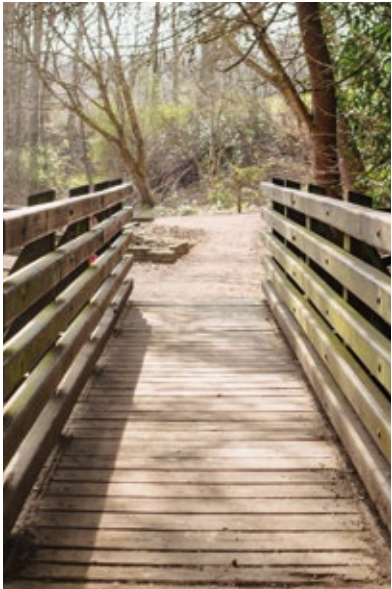
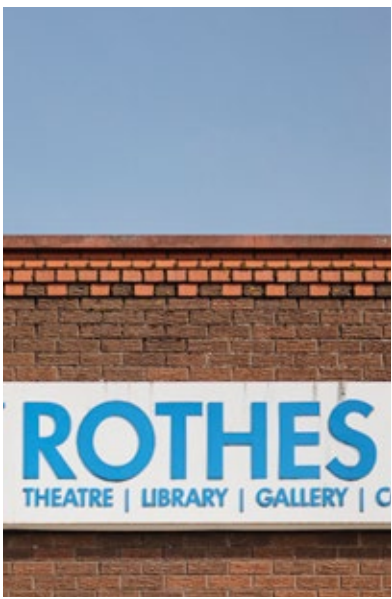


There are Asda, Morrisons, and Aldi supermarkets and an M&S Foodhall nearby and, ten minutes' walk away, the Kingdom Shopping Centre includes more than 100 retailers, restaurants and other services. As well as fashion, technology and sports brands, there are traditional bakers and butchers, a Boots pharmacy, a post office, opticians, hairdressers and banks. Recycling facilities can be found in the car park. The Kingdom Centre also houses a library, a Kino multiplex cinema and the Rothes Halls, which presents live music, drama and dance, visual art exhibitions, an Escape Room adventure space and a café. Leisure amenities include the nearby Balbirnie Fitness Centre, and the exciting family activities at Xtreme Trampoline Park.

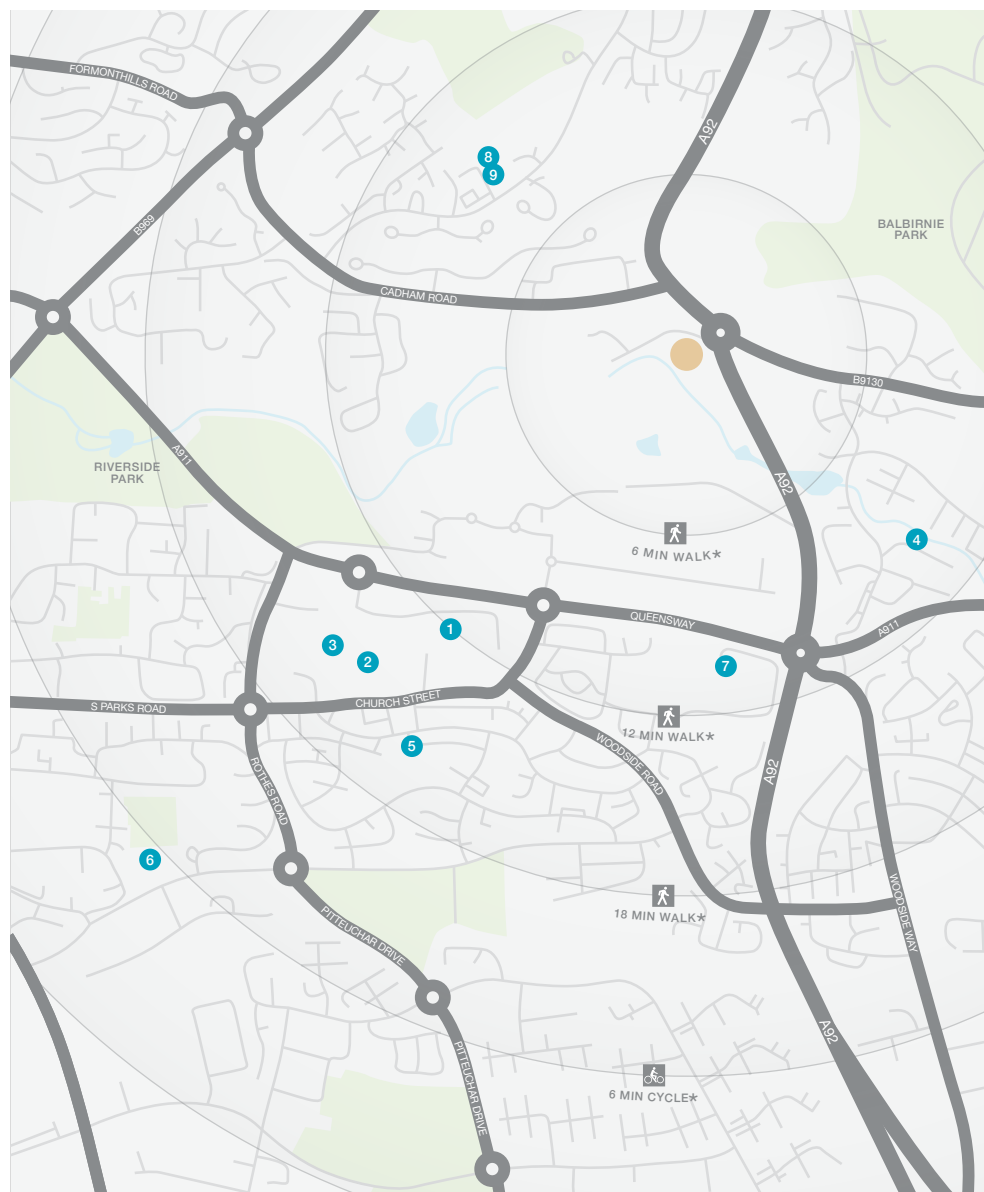


Just two hundred yards west of Leven Mill, the vast Riverside Park includes a skatepark, play areas, sports pitches, woodlands, floral gardens, a pond and an arboretum, alongside public art and delightful walks along the River Leven. It also forms part of the Pilgrims Way, a long-distance path across Fife. The woodland and waterside walks of Balbirnie Park, a mile away, sit beside one of Fife's many celebrated golf courses. Lomond Hills Regional Park, around two miles away, brings endless opportunities for walking and cycling. To the east lies Loch Leven, a National Nature Reserve, which boasts the award winning Loch Leven Larder, while the beautiful fishing villages of the East Neuk of Fife are all in easy reach for days out.

Leven Mill is in the catchment areas for Warout Primary School, St Paul's RC Primary School and Auchmuty High School, all within 20 minutes' walk. St Paul's is a feeder school for St Andrew's RC High School in Kirkcaldy. North Glen Medical Practice, a large full time surgery conveniently situated next to a dentist half a mile to the north, is the nearest of several GP practices in the town.



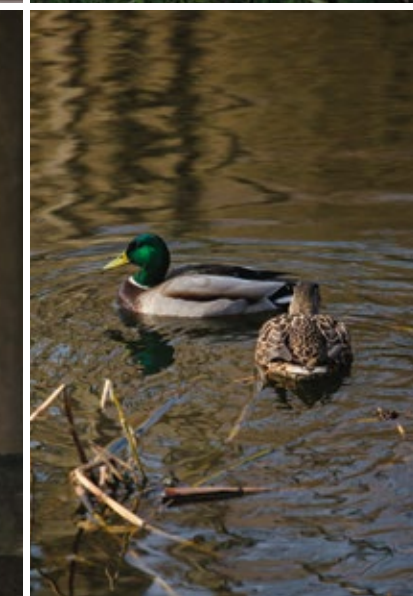
When you leave the car at home and explore the local area by foot or bicycle, you get to know it so much better. And by using local shops and services, you'll help to keep the neighbourhood vibrant and prosperous. Every place has its own personality, and once you move in you'll soon find your favourite walks, and the shops you like best. As a starting point this map shows some of the most useful features and services within a short stroll or bike ride.



- 1 Boots Pharmacy
12-14 Lyon Square
01592 758 783
 - 2 WH Smith and Post Office
21 Unicorn Way
01592 750 526
 - 3 Rothes Halls
Kingdom Shopping Centre
01592 611 101
 - 4 Balbirnie Fitness Centre
Woolmill Road
01692 751 437
 - 5 Warout Primary and
Community School
166 Alexander Road
01592 583 468
 - 6 St Paul's RC Primary School
Rimbleton Avenue
01592 583 462
 - 7 Auchmuty High School
Dovecot Road
01592 583 401
 - 8 North Glen Medical Practice
1 Huntsman's Court
01592 620 062
 - 9 Nanodent Dental Practice
2 Huntsman's Court
01592 744 673
- St Andrew's RC High School
Overton Road, Kirkcaldy
01592 583 407

* Times stated are averages based on approximate distances and would be dependent on the route taken.

Based on:
0.5km = 5 to 7 mins walk
1.0km = 10 to 14 mins walk
1.5km = 15 to 21 mins walk
2.0km = 5 to 8 mins cycle



How to find us

Development
Opening Times:
Thursday - Monday
10.30am - 5.30pm
03301 627 298

From Dundee
Cross the Tay Road Bridge and take the second exit at the Tay Bridge Roundabout to join the A92. Stay on the A92 for 21 miles, then at Preston Roundabout take the third exit, for Glenrothes North. At the Queensway Roundabout take the third exit and carry on for a quarter of a mile, passing through two more roundabouts. At the third roundabout, take the second exit into the development.

From Edinburgh
Cross the Forth by the M90, then leave the M90 at junction 2A to join the A92 for Glenrothes. Stay on the A92 for 15 miles, then at Preston Roundabout take the first exit, for Glenrothes town centre. At the Queensway Roundabout take the third exit and carry on for a quarter of a mile, passing through two more roundabouts. At the third roundabout, take the second exit into the development.

Sat Nav: KY7 6PB



The homes we build are the foundations of sustainable communities that will flourish for generations to come. We work in harmony with the natural environment, protecting and preserving it wherever we can. With our customers, colleagues and partners, we strive to promote better practices and ways of living. We're playing our part in making the world A Better Place.

a better place®

Important Notice:
Although every care has been taken to ensure the accuracy of all the information given, the contents do not form part of any contract, or constitute a representation or warranty, and, as such, should be treated as a guide only. Interested parties should check with the Development Sales Manager and confirm all details with their solicitor. The developer reserves the right to amend the specification, as necessary, without prior notice, but to an equal or higher standard. Please note that items specified in literature and showhomes may depict appliances, fittings and decorative finishes that do not form part of the standard specification. The project is a new development which is currently under construction. Measurements provided have not been surveyed on-site. The measurements have been taken from architect's plans, and, as such, may be subject to variation during the course of construction. Not all the units described have been completed at the time of going to print and measurements and dimensions should be checked with the Development Sales Manager and confirmed with solicitors.



Registered Developer

the place to be®

Why Miller Homes?

We've been building homes since 1934, that's three generations of experience. We've learned a lot about people and that's made a big difference to what we do and how we do it.

We're enormously proud of the homes we build, combining traditional craftsmanship with new ideas like low carbon technologies. The big difference is that we don't stop caring once we've finished the building, or when we've sold the house, or even once you've moved in. We're there when you need us, until you're settled, satisfied and inviting your friends round.



5 stars for customer satisfaction

Development

Opening Times

Please see millerhomes.co.uk for development opening times or call 03301 627 298

Sat Nav: KY7 6PB

This brochure is printed on GaleriArt and contains material sourced from responsibly managed forests. It's certified by the Forest Stewardship Council, an organisation dedicated to promoting responsible forest management and manufacture of wood products, like paper. It's a small thing, we know, but enough small things make a big difference. Please recycle this brochure and help make that difference.

millerhomes.co.uk

millerhomes

the place to be®