

TO  
LET

£1,175 PCM

Compass Point, Fareham, PO16 0LJ



## HIGHLIGHTS

- ❖ AVAILABLE NOW
- ❖ TOP FLOOR FLAT
- ❖ TWO BEDROOMS
- ❖ NEWLY FITTED SHOWER ROOM
- ❖ ALLOCATED PARKING
- ❖ OPEN PLAN KITCHEN
- ❖ UNFURNISHED
- ❖ EPC RATING C
- ❖ ELECTRIC ONLY
- ❖ WALKING DISTANCE TO FAREHAM TOWN CENTER

Bernards Estates are proud to present this two-bedroom top floor flat in Compass Point, Fareham.

The property features an open-plan kitchen and living area, modern bathroom, and two well-sized bedrooms. The flat also includes allocated parking for one vehicle and is offered unfurnished.

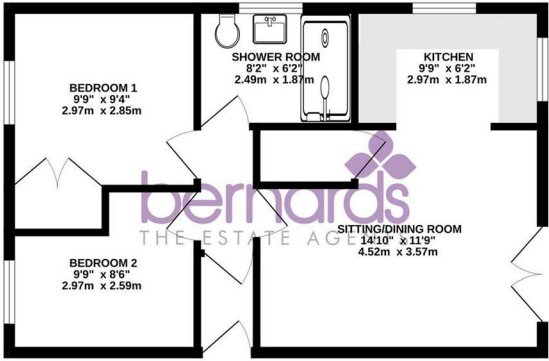
Close to local amenities, transport links, and green spaces, this flat provides easy access to Fareham town centre and nearby areas.

Call us now to arrange a viewing!

 2  1  1



GROUND FLOOR  
493 sq.ft. (45.8 sq.m.) approx.



TOTAL FLOOR AREA - 493 sq.ft. (45.8 sq.m.) approx.  
While every attempt has been made to ensure the accuracy of the floorplan contained herein, measurements of plots, boundaries, areas and any other details are approximate and are not intended to be used as a basis for any legal proceedings or any other purpose. The floorplan, layout and dimensions shown here are not intended to be used as a basis for any legal proceedings or any other purpose. The floorplan, layout and dimensions shown here are not intended to be used as a basis for any legal proceedings or any other purpose. Made with Neoplan 12/24



Energy Efficiency Rating		
	Current	Potential
Very energy efficient - lower running costs		
(92 plus) <b>A</b>		
(81-91) <b>B</b>		
(69-80) <b>C</b>		
(55-68) <b>D</b>		
(39-54) <b>E</b>		
(21-38) <b>F</b>		
(1-20) <b>G</b>		
Not energy efficient - higher running costs		
England & Wales		
EU Directive 2002/91/EC		

