

TO  
LET

£1,200 PCM

Hillson Drive, Fareham, PO15 6NT



## HIGHLIGHTS

- ❖ LARGE GARDEN
- ❖ TWO BEDROOMS
- ❖ ADDITIONAL STORAGE SPACE
- ❖ SEPERATE MODERN KITCHEN
- ❖ NETURALLY PRESENTED
- ❖ MAISONETTE
- ❖ CENTRAL LOCATION
- ❖ UNFURNISHED
- ❖ AVAILABLE NOW
- ❖ A MUST VIEW

Welcome to Hillson Drive, Fareham - a two-bedroom maisonette. This property boasts a unique character as it is a converted flat, offering a cosy and inviting atmosphere.

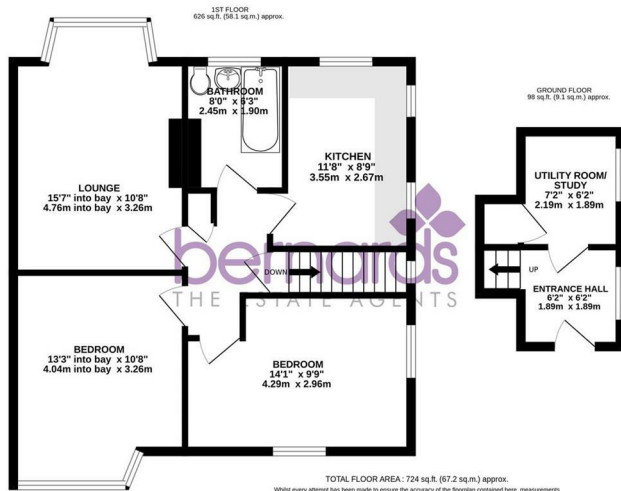
Upon entering, you are greeted by a spacious reception room, perfect for entertaining guests or simply relaxing after a long day. The property features two well-appointed bedrooms, providing ample space for a small family, a couple, or even a home office.

One of the standout features of this maisonette is the private garden, allowing you to enjoy the outdoors in the comfort of your own home. Whether you have a green thumb or simply enjoy al fresco dining, this garden is sure to be a delightful retreat.

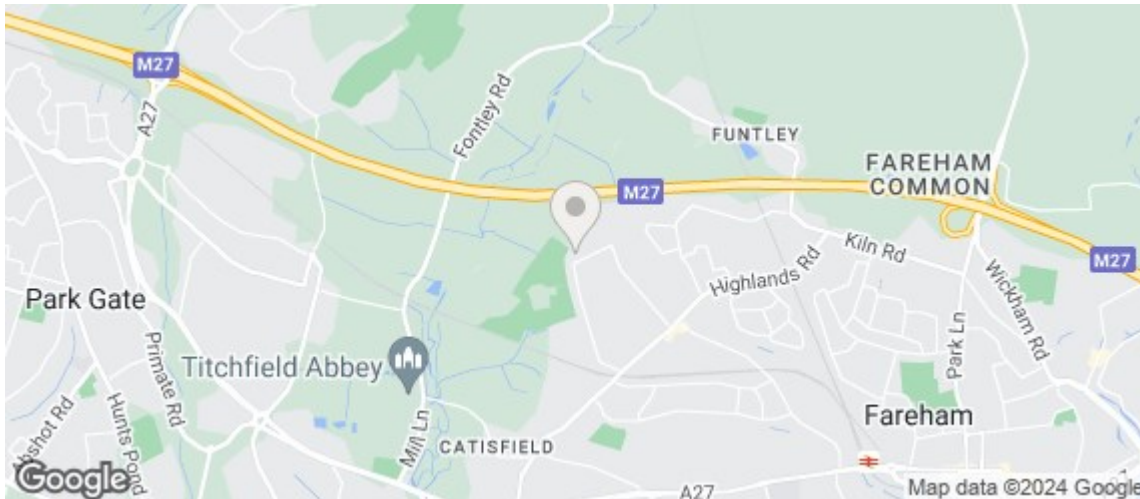
In addition to the bedrooms and reception room, the property also offers a bathroom for your convenience. Furthermore, the extra storage space ensures that you can keep your belongings neatly tucked away, maintaining a clutter-free living environment.

This property is available now.





TOTAL FLOOR AREA: 724 sq.ft. (67.2 sq.m.) approx.  
 Whilst every attempt has been made to ensure the accuracy of the floorplan contained herein, measurements of doors, windows, rooms and any other items are approximate and no responsibility is taken for any error, omission or misstatement. This plan for marketing purposes only and should be used as such by any prospective purchaser. The services, systems and appliances shown have not been tested and no guarantee as to their operation or efficiency can be given.  
 Made with Metropac 7/2021



| Energy Efficiency Rating                    |  | Current | Potential |
|---|--|---------|-----------|
| Very energy efficient - lower running costs |  |         |           |
| (92 plus) A                                 |  |         |           |
| (81-91) B                                   |  |         |           |
| (69-80) C                                   |  |         |           |
| (55-68) D                                   |  |         |           |
| (39-54) E                                   |  |         |           |
| (21-38) F                                   |  |         |           |
| (1-20) G                                    |  |         |           |
| Not energy efficient - higher running costs |  |         |           |
|   |  | 53      | 67        |

England & Wales EU Directive 2002/91/EC

