




WOODLANDS EDGE
BEREWOOD

Creating Better Life Experiences.
One Home at a Time.


Woodland Edge Sales & Marketing Suite
Berewood, Newlands Avenue, Waterlooville, PO7 3BX

 02394 271 188

LAWRENCE
THREE
BEDROOM
HOME

BLOOR HOMES



A three bedroom detached home with a substantial lounge and an impressive open plan kitchen / dining area with French doors leading to the rear garden. Upstairs boasts three generous bedrooms with the master benefitting from an en suite shower room.

LAWRENCE

A STYLISH THREE BEDROOM
DETACHED HOME

**LAWRENCE
THREE
BEDROOM
HOME**

FIRST FLOOR:

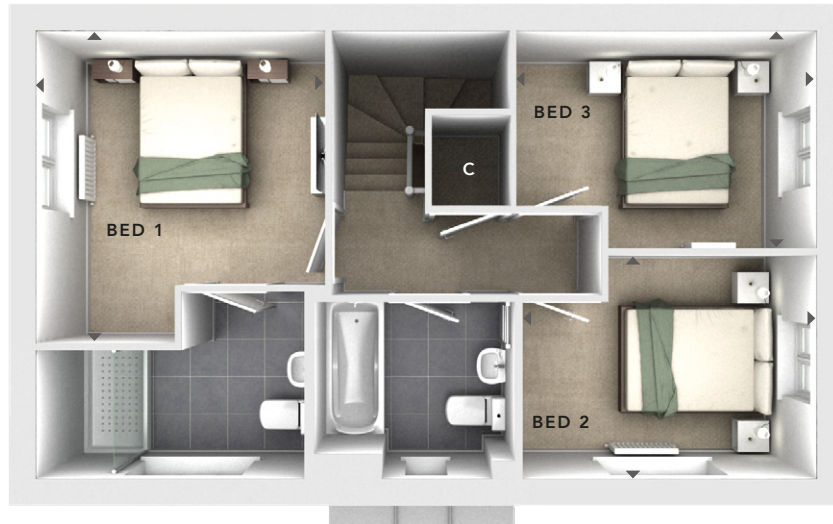
BEDROOM 1
3.21m x 3.48m
10'6" x 11'5"

EN SUITE

BEDROOM 2
3.31m x 2.45m
10'10" x 8'0"

BEDROOM 3
3.33m x 2.43m
10'11" x 7'11"

BATHROOM



**FIRST
FLOOR**

GROUND FLOOR:

LOUNGE
3.26m x 4.95m
10'8" x 16'3"

KITCHEN / DINING
3.21m x 4.95m
10'6" x 16'3"

CLOAKS



**GROUND
FLOOR**

C	- Storage
△	- External Access
◄►	- Measurement Points
© Bloor Homes • 301R 4.11	

DRAKE
TWO
BEDROOM
HOME

BLOOR HOMES



A two bedroom terraced home with a perfectly proportioned lounge and a stunning open plan kitchen / dining area with a utility, cloakroom and French doors opening onto the rear garden. Upstairs is home to the family bathroom and two spacious double bedrooms with ample room for storage.

DRAKE

A STYLISH TWO BEDROOM
TERRACED HOME

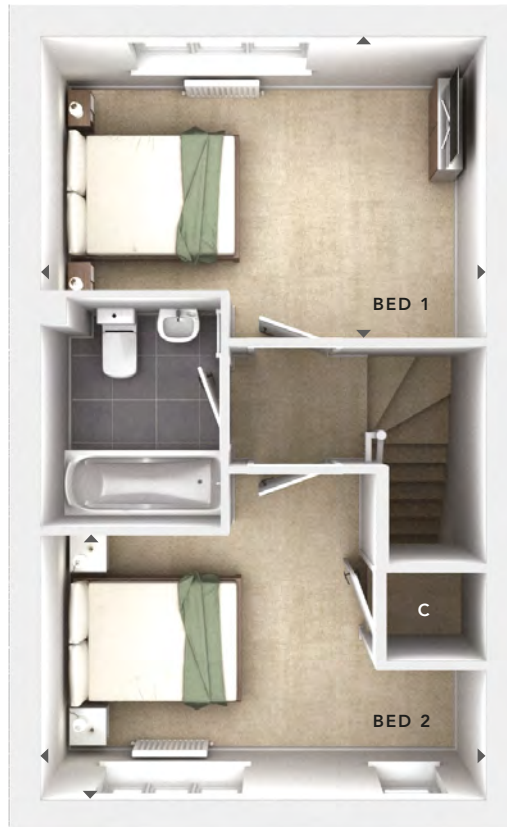
**DRAKE
TWO
BEDROOM
HOME**

FIRST FLOOR:

BEDROOM 1
4.22m x 2.86m
13'10" x 9'4"

BEDROOM 2
4.22m x 2.50m
13'10" x 8'2"

BATHROOM



GROUND FLOOR:

LOUNGE
3.10m x 4.17m
10'2" x 13'8"

KITCHEN / DINING
3.09m x 3.01m
10'2" x 9'10"

UTILITY
1.05m x 1.70m
3'5" x 5'7"

CLOAKS

**FIRST
FLOOR**



**GROUND
FLOOR**

C	- Storage
	- External Access
	- Measurement Points
© Bloor Homes • 811B 4.5	



These particulars are intended as a preliminary guide for prospective purchasers and should not be relied upon. The elevational treatment for individual house types shows a typical arrangement. Details of materials and design treatments may vary. Any artist impressions shown are not intended to represent any particular plot. Purchasers are advised to inspect the layout plan to establish the arrangement of the house and surrounding property. Internal layouts show a general arrangement which may vary from plot to plot. Room sizes given are approx. overall finished room sizes and subject to normal building tolerances (ie ± 75mm). In all instances purchasers are advised to inspect plot specific information available from our sales team. Nothing in these particulars or verbal assurance shall form or constitute part of any contract, and are given without any responsibility on behalf of Bloor Homes.

**MAKENZIE
THREE
BEDROOM
HOME**

BLOOR HOMES



A three bedroom semi-detached family home offering a charming lounge and stunning open plan kitchen / dining area with French doors leading to the rear garden. Downstairs also comprises a convenient utility area and cloakroom. The master suite occupies the whole of the second floor and benefits from an en suite shower room.

MAKENZIE

A BEAUTIFUL THREE
BEDROOM SEMI-DETACHED
FAMILY HOME

MAKENZIE THREE BEDROOM HOME

GROUND FLOOR:

LOUNGE
3.24m x 4.46m
10'8" x 14'8"

KITCHEN / DINING
3.20m x 3.74m
10'6" x 12'3"

UTILITY
1.05m x 2.00m
3'5" x 6'7"

CLOAKS

FIRST FLOOR:

BEDROOM 2
4.32m x 2.84m
14'2" x 9'4"

BEDROOM 3
2.24m x 3.16m
7'4" x 10'4"

BATHROOM

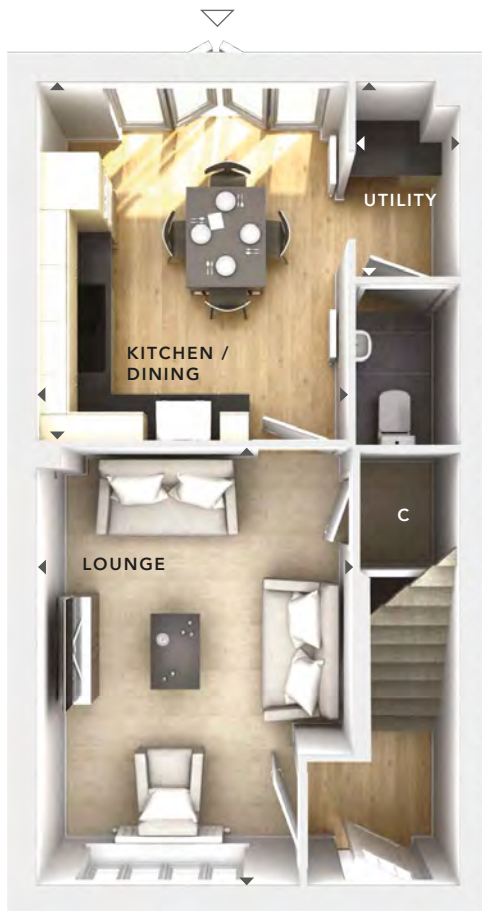
SECOND FLOOR:

BEDROOM 1
3.21m x 5.55m
10'6" x 18'3"

EN SUITE



SECOND FLOOR



GROUND FLOOR



FIRST FLOOR

- C** - Storage
- △ - External Access
- ◀▶ - Measurement Points

© Bloor Homes • 384B 4.9

BLOOR HOMES

These particulars are intended as a preliminary guide for prospective purchasers and should not be relied upon. The elevational treatment for individual house types shows a typical arrangement. Details of materials and design treatments may vary. Any artist impressions shown are not intended to represent any particular plot. Purchasers are advised to inspect the layout plan to establish the arrangement of the house and surrounding property. Internal layouts show a general arrangement which may vary from plot to plot. Room sizes given are approx. overall finished room sizes and subject to normal building tolerances (ie ± 75mm). In all instances purchasers are advised to inspect plot specific information available from our sales team. Nothing in these particulars or verbal assurance shall form or constitute part of any contract, and are given without any responsibility on behalf of Bloor Homes.

MORRIS
FOUR
BEDROOM
HOME

BLOOR HOMES



A four bedroom detached home with spacious lounge and fantastic open plan kitchen / dining area featuring French doors leading to the garden. Downstairs also comprises a utility cupboard and cloakroom. Upstairs, the first floor is home to the family bathroom and three bedrooms. The second floor boasts a generously sized master bedroom featuring fitted wardrobes and an en suite shower room.

MORRIS

A BEAUTIFUL THREE STOREY
FOUR BEDROOM HOME

MORRIS FOUR BEDROOM HOME

GROUND FLOOR:

LOUNGE

3.36m x 4.61m
11'0" x 15'2"

KITCHEN / DINING

6.20m x 3.11m
20'4" x 10'3"

UTILITY CUPBOARD

CLOAKS

FIRST FLOOR:

BEDROOM 2

3.78m x 3.15m
12'5" x 10'4"

EN SUITE

BEDROOM 3

3.42m x 3.05m
11'3" x 10'0"

BEDROOM 4

2.86m x 2.28m
9'5" x 7'6"

BATHROOM

SECOND FLOOR:

BEDROOM 1

3.64m x 4.17m
11'11" x 13'8"

EN SUITE



SECOND
FLOOR



GROUND
FLOOR



FIRST
FLOOR

- W - Fitted Wardrobes
- C - Storage
- U - Utility Cupboard
- △ - External Access
- ◀▶ - Measurement Points

© Bloor Homes • 477B 4.5

BLOOR HOMES

These particulars are intended as a preliminary guide for prospective purchasers and should not be relied upon. The elevational treatment for individual house types shows a typical arrangement. Details of materials and design treatments may vary. Any artist impressions shown are not intended to represent any particular plot. Purchasers are advised to inspect the layout plan to establish the arrangement of the house and surrounding property. Internal layouts show a general arrangement which may vary from plot to plot. Room sizes given are approx. overall finished room sizes and subject to normal building tolerances (ie ± 75mm). In all instances purchasers are advised to inspect plot specific information available from our sales team. Nothing in these particulars or verbal assurance shall form or constitute part of any contract, and are given without any responsibility on behalf of Bloor Homes.

LYTTELTON
THREE
BEDROOM
HOME

BLOOR HOMES



A three bedroom home with a substantial lounge and an impressive open plan kitchen / dining area with French doors leading to the rear garden. Upstairs boasts three bedrooms, the master bedroom benefits from an en suite shower room.

LYTTELTON

A STYLISH THREE
BEDROOM HOME

**LYTTELTON
THREE
BEDROOM
HOME**

FIRST FLOOR:

BEDROOM 1
3.39m x 2.75m
11'1" x 9'0"

EN SUITE

BEDROOM 2
2.63m x 3.28m
8'7" x 10'9"

BEDROOM 3
2.05m x 3.26m
6'9" x 10'8"

BATHROOM



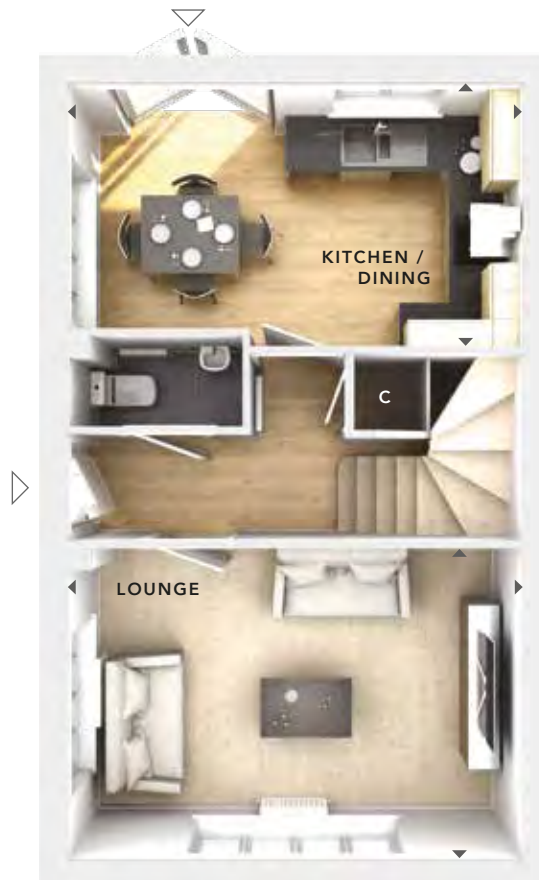
**FIRST
FLOOR**

GROUND FLOOR:

LOUNGE
4.75m x 3.26m
15'7" x 10'8"

KITCHEN / DINING
4.75m x 2.75m
15'7" x 9'0"

CLOAKS



**GROUND
FLOOR**

C	- Storage
△	- External Access
◀▶	- Measurement Points
© Bloor Homes • 818R 4.2	



These particulars are intended as a preliminary guide for prospective purchasers and should not be relied upon. The elevational treatment for individual house types shows a typical arrangement. Details of materials and design treatments may vary. Any artist impressions shown are not intended to represent any particular plot. Purchasers are advised to inspect the layout plan to establish the arrangement of the house and surrounding property. Internal layouts show a general arrangement which may vary from plot to plot. Room sizes given are approx. overall finished room sizes and subject to normal building tolerances (ie ± 75mm). In all instances purchasers are advised to inspect plot specific information available from our sales team. Nothing in these particulars or verbal assurance shall form or constitute part of any contract, and are given without any responsibility on behalf of Bloor Homes.

**PEELE
FOUR
BEDROOM
HOME**

BLOOR HOMES



A four bedroom detached home featuring a generously sized lounge, study, an outstanding open plan kitchen / dining / family area with a utility cupboard and French doors opening onto the rear garden. Upstairs is home to four double bedrooms, two with an en suite shower room and the master bedroom complete with fitted wardrobes.

PEELE

A BEAUTIFUL FOUR
BEDROOM FAMILY HOME

**PEELE
FOUR
BEDROOM
HOME**

FIRST FLOOR:

BEDROOM 1
2.77m x 3.91m
9'1" x 12'10"

EN SUITE

BEDROOM 2
2.85m x 4.56m
9'4" x 14'11"

EN SUITE

BEDROOM 3
3.50m x 2.98m
11'6" x 9'9"

BEDROOM 4
3.42m x 2.98m
11'3" x 9'9"

BATHROOM

GROUND FLOOR:

LOUNGE
3.81m x 5.24m
12'6" x 17'2"

**KITCHEN / DINING /
FAMILY**
5.59m x 7.62m
18'4" x 25'0"

UTILITY CUPBOARD

STUDY
2.66m x 2.30m
8'9" x 7'7"

CLOAKS



**FIRST
FLOOR**



**GROUND
FLOOR**

- W** - Fitted Wardrobes
- C** - Storage
- U** - Utility Cupboard
- △ - External Access
- ◀▶ - Measurement Points

© Bloor Homes • 482B 4.8

BLOOR HOMES

These particulars are intended as a preliminary guide for prospective purchasers and should not be relied upon. The elevational treatment for individual house types shows a typical arrangement. Details of materials and design treatments may vary. Any artist impressions shown are not intended to represent any particular plot. Purchasers are advised to inspect the layout plan to establish the arrangement of the house and surrounding property. Internal layouts show a general arrangement which may vary from plot to plot. Room sizes given are approx. overall finished room sizes and subject to normal building tolerances (ie ± 75mm). In all instances purchasers are advised to inspect plot specific information available from our sales team. Nothing in these particulars or verbal assurance shall form or constitute part of any contract, and are given without any responsibility on behalf of Bloor Homes.

HILLCOTT
FOUR
BEDROOM
HOME

BLOOR HOMES



A four bedroom detached home with spacious lounge and fantastic open plan kitchen / dining and family area featuring a bay window and French doors leading to the rear garden. Upstairs, there are four bedrooms with the master bedroom benefitting from fitted wardrobes and en suite facilities.

HILLCOTT

A STUNNING FOUR BEDROOM
DETACHED HOME

**HILLCOTT
FOUR
BEDROOM
HOME**

FIRST FLOOR:

BEDROOM 1
2.79m x 3.28m
9'2" x 10'9"

EN SUITE

BEDROOM 2
3.81m x 3.18m
12'6" x 10'5"

BEDROOM 3
2.37m x 3.15m
7'9" x 10'4"

BEDROOM 4
2.83m x 2.31m
9'3" x 7'7"

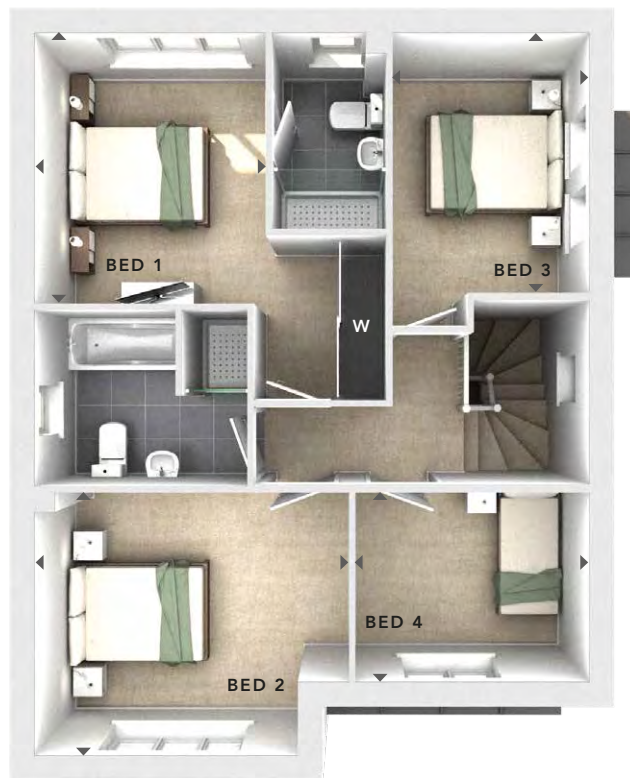
BATHROOM

GROUND FLOOR:

LOUNGE
3.76m x 4.77m
12'4" x 15'8"

KITCHEN / DINING
6.71m x 3.85m
22'0" x 12'8"

CLOAKS



FIRST FLOOR



GROUND FLOOR

W	- Fitted Wardrobes
U	- Utility Cupboard
△	- External Access
◀▶	- Measurement Points
© Bloor Homes • 400R 4.3	



These particulars are intended as a preliminary guide for prospective purchasers and should not be relied upon. The elevational treatment for individual house types shows a typical arrangement. Details of materials and design treatments may vary. Any artist impressions shown are not intended to represent any particular plot. Purchasers are advised to inspect the layout plan to establish the arrangement of the house and surrounding property. Internal layouts show a general arrangement which may vary from plot to plot. Room sizes given are approx. overall finished room sizes and subject to normal building tolerances (i.e. ± 75mm). In all instances purchasers are advised to inspect plot specific information available from our sales team. Nothing in these particulars or verbal assurance shall form or constitute part of any contract, and are given without any responsibility on behalf of Bloor Homes.

SAXONDALE
THREE
BEDROOM
HOME

BLOOR HOMES



A three bedroom detached home with a spacious lounge and fantastic open plan kitchen / dining / family area featuring French doors leading to the rear garden. Upstairs, all bedrooms benefit from an en suite shower room with the master comprising of a bathroom and dressing room.

SAXONDALE

AN OUTSTANDING
THREE BEDROOM HOME

**SAXONDALE
THREE
BEDROOM
HOME**

FIRST FLOOR:

BEDROOM 1
3.76m x 3.89m
12'4" x 12'8"

DRESSING AREA
3.11m x 1.80m
10'2" x 5'11"

EN SUITE

BEDROOM 2
3.04m x 3.55m
10'0" x 11'8"

EN SUITE

BEDROOM 3
2.86m x 3.36m
9'4" x 11'0"

EN SUITE

GROUND FLOOR:

LOUNGE
3.72m x 4.55m
12'3" x 14'11"

KITCHEN / DINING
9.09m x 3.52m
29'10" x 11'7"

CLOAKS

GARAGE



FIRST FLOOR



GROUND FLOOR

W	- Fitted Wardrobes
C	- Storage
△	- External Access
◀▶	- Measurement Points
© Bloor Homes • 396B 4.7	



These particulars are intended as a preliminary guide for prospective purchasers and should not be relied upon. The elevational treatment for individual house types shows a typical arrangement. Details of materials and design treatments may vary. Any artist impressions shown are not intended to represent any particular plot. Purchasers are advised to inspect the layout plan to establish the arrangement of the house and surrounding property. Internal layouts show a general arrangement which may vary from plot to plot. Room sizes given are approx. overall finished room sizes and subject to normal building tolerances (ie ± 75mm). In all instances purchasers are advised to inspect plot specific information available from our sales team. Nothing in these particulars or verbal assurance shall form or constitute part of any contract, and are given without any responsibility on behalf of Bloor Homes.

HARWOOD
FOUR
BEDROOM
HOME

BLOOR HOMES



A four bedroom detached home comprising a spacious lounge and impressive kitchen / dining / family area with a bay window, both feature beautiful French doors opening onto the rear garden. Downstairs also includes a convenient utility cupboard, study and cloakroom. Upstairs boasts four double bedrooms and the family bathroom, complete with a bath and separate shower enclosure. The master bedroom features fitted wardrobes and an en suite shower room.

HARWOOD

AN OUTSTANDING FOUR
BEDROOM FAMILY HOME

**HARWOOD
FOUR
BEDROOM
HOME**

FIRST FLOOR:

BEDROOM 1
3.73m x 3.01m
12'3" x 9'10"

EN SUITE

BEDROOM 2
3.55m x 3.66m
11'8" x 12'0"

BEDROOM 3
3.57m x 2.93m
11'8" x 9'7"

BEDROOM 4
4.36m x 2.72m
14'4" x 8'11"

BATHROOM



**FIRST
FLOOR**

GROUND FLOOR:

LOUNGE
3.59m x 4.79m
11'9" x 15'8"

**KITCHEN / DINING /
FAMILY**
4.26m x 8.05m
14'0" x 26'5"

STUDY
3.16m x 2.23m
10'4" x 7'4"

UTILITY CUPBOARD

CLOAKS



**GROUND
FLOOR**

W	- Fitted Wardrobes
C	- Storage
U	- Utility Cupboard
△	- External Access
◀▶	- Measurement Points
© Bloor Homes • 481B 4.5	



These particulars are intended as a preliminary guide for prospective purchasers and should not be relied upon. The elevational treatment for individual house types shows a typical arrangement. Details of materials and design treatments may vary. Any artist impressions shown are not intended to represent any particular plot. Purchasers are advised to inspect the layout plan to establish the arrangement of the house and surrounding property. Internal layouts show a general arrangement which may vary from plot to plot. Room sizes given are approx. overall finished room sizes and subject to normal building tolerances (i.e. ± 75mm). In all instances purchasers are advised to inspect plot specific information available from our sales team. Nothing in these particulars or verbal assurance shall form or constitute part of any contract, and are given without any responsibility on behalf of Bloor Homes.

WYATT
FOUR
BEDROOM
HOME

BLOOR HOMES



A four bedroom detached home comprising a spacious lounge with bay window and fantastic open plan kitchen / dining / family area, featuring French doors leading to the rear garden. Downstairs also comprises a utility cupboard and cloakroom. Upstairs, three of the four bedrooms are spacious doubles, with the master bedroom benefitting from fitted wardrobes and an en suite shower room.

WYATT

A SPACIOUS DETACHED FOUR
BEDROOM FAMILY HOME

**WYATT
FOUR
BEDROOM
HOME**

FIRST FLOOR:

BEDROOM 1
2.88m x 3.68m
9'6" x 12'1"

EN SUITE

BEDROOM 2
3.95m x 2.47m
12'11" x 8'1"

BEDROOM 3
2.61m x 3.15m
8'7" x 10'4"

BEDROOM 4
3.18m x 2.28m
10'5" x 7'6"

BATHROOM

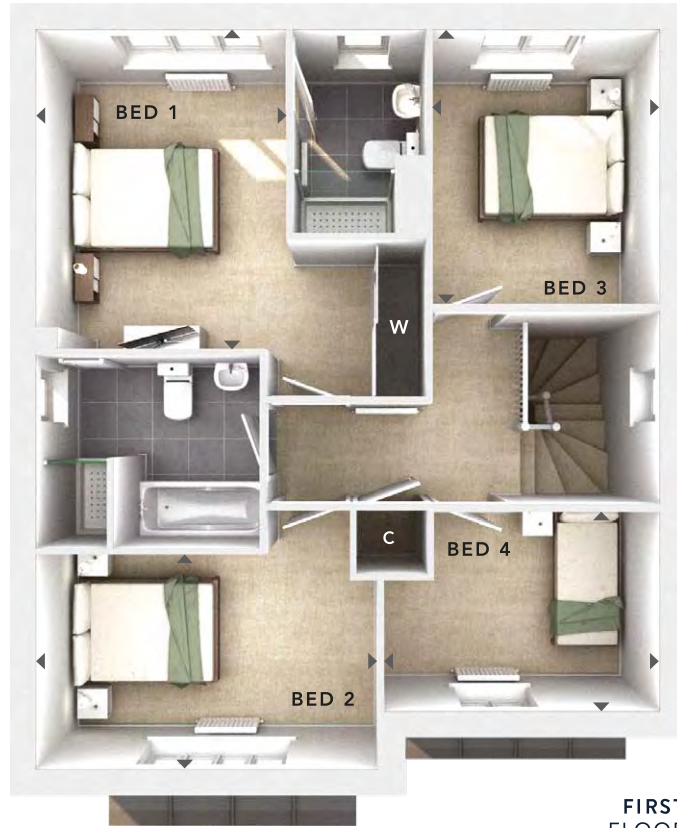
GROUND FLOOR:

LOUNGE
4.11m x 4.15m
13'6" x 13'7"

**KITCHEN / DINING /
FAMILY**
7.20m x 4.25m
23'8" x 13'11"

UTILITY CUPBOARD

CLOAKS



**FIRST
FLOOR**



**GROUND
FLOOR**

W	- Fitted Wardrobes
C	- Storage
U	- Utility Cupboard
△	- External Access
◀▶	- Measurement Points
© Bloor Homes • 476B 4.7	



These particulars are intended as a preliminary guide for prospective purchasers and should not be relied upon. The elevational treatment for individual house types shows a typical arrangement. Details of materials and design treatments may vary. Any artist impressions shown are not intended to represent any particular plot. Purchasers are advised to inspect the layout plan to establish the arrangement of the house and surrounding property. Internal layouts show a general arrangement which may vary from plot to plot. Room sizes given are approx. overall finished room sizes and subject to normal building tolerances (ie ± 75mm). In all instances purchasers are advised to inspect plot specific information available from our sales team. Nothing in these particulars or verbal assurance shall form or constitute part of any contract, and are given without any responsibility on behalf of Bloor Homes.

WOLLATON
FOUR
BEDROOM
HOME

BLOOR HOMES



A four bedroom detached home with spacious lounge and fantastic open plan kitchen / dining and family area featuring a bay window and French doors leading to the rear garden. Upstairs, there are four bedrooms with the master bedroom benefitting from fitted wardrobes and en suite facilities.

WOLLATON

A STUNNING FOUR BEDROOM
DETACHED HOME

**WOLLATON
FOUR
BEDROOM
HOME**

FIRST FLOOR:

BEDROOM 1
2.88m x 3.68m
9'6" x 12'1"

EN SUITE

BEDROOM 2
3.95m x 2.47m
12'11" x 8'1"

BEDROOM 3
2.61m x 3.15m
8'7" x 10'4"

BEDROOM 4
3.18m x 2.28m
10'5" x 7'6"

BATHROOM

GROUND FLOOR:

LOUNGE
4.11m x 4.15m
13'6" x 13'7"

KITCHEN / DINING
7.20m x 4.25m
23'8" x 13'11"

CLOAKS



FIRST FLOOR



GROUND FLOOR

C	- Storage
W	- Fitted Wardrobes
U	- Utility Cupboard
△	- External Access
◀▶	- Measurement Points
© Bloor Homes • 401B 4.3	



These particulars are intended as a preliminary guide for prospective purchasers and should not be relied upon. The elevational treatment for individual house types shows a typical arrangement. Details of materials and design treatments may vary. Any artist impressions shown are not intended to represent any particular plot. Purchasers are advised to inspect the layout plan to establish the arrangement of the house and surrounding property. Internal layouts show a general arrangement which may vary from plot to plot. Room sizes given are approx. overall finished room sizes and subject to normal building tolerances (i.e. ± 75mm). In all instances purchasers are advised to inspect plot specific information available from our sales team. Nothing in these particulars or verbal assurance shall form or constitute part of any contract, and are given without any responsibility on behalf of Bloor Homes.

HALLAM
FOUR
BEDROOM
HOME

BLOOR HOMES



A four bedroom detached home featuring a spacious lounge, open plan kitchen / dining / family area with French doors to the rear garden. A utility cupboard and cloakroom complete this floor. Upstairs is home to four bedrooms, two of which are double and the master bedroom boasting fitted wardrobes and an en suite shower room.

HALLAM

A SPACIOUS FOUR
BEDROOM FAMILY HOME

HALLAM FOUR BEDROOM HOME

FIRST FLOOR:

BEDROOM 1
2.58m x 3.15m
8'5" x 10'4"

EN SUITE

BEDROOM 2
3.57m x 2.45m
11'8" x 8'0"

BEDROOM 3
2.03m x 3.15m
6'8" x 10'4"

BEDROOM 4
2.56m x 2.28m
8'5" x 7'6"

BATHROOM

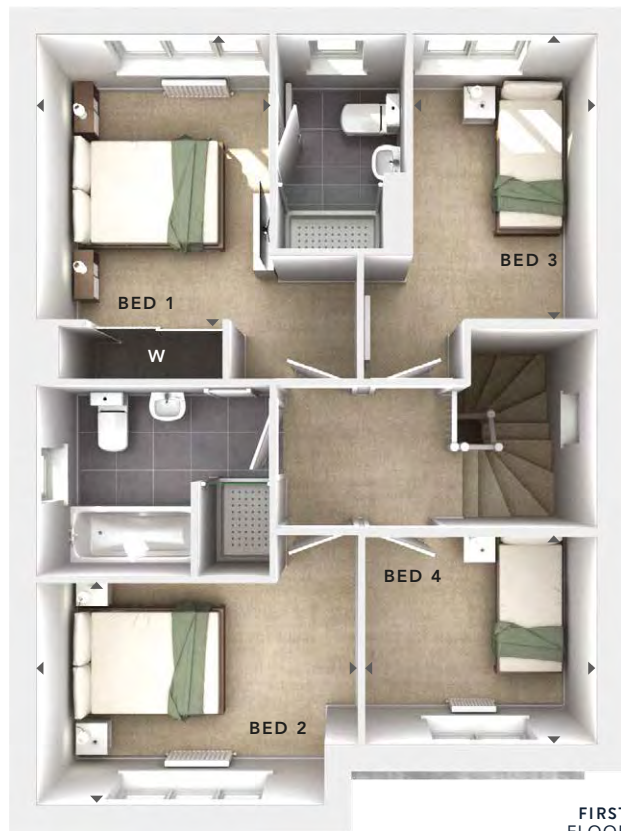
GROUND FLOOR:

LOUNGE
3.35m x 4.64m
11'0" x 15'3"

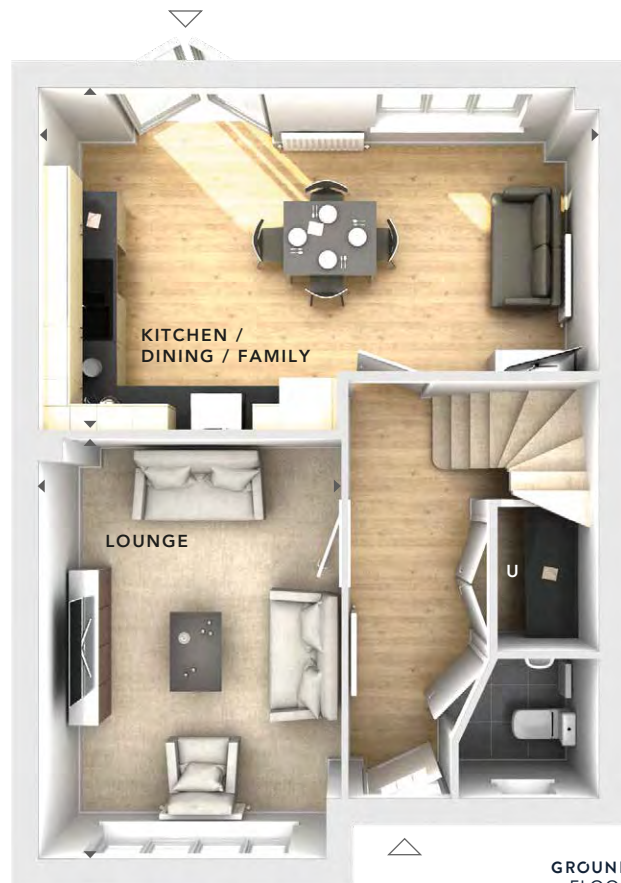
**KITCHEN /
DINING / FAMILY**
6.20m x 3.76m
20'4" x 12'4"

UTILITY CUPBOARD

CLOAKS



FIRST
FLOOR



GROUND
FLOOR

- W** - Fitted Wardrobes
- U** - Utility Cupboard
- △ - External Access
- ◀▶ - Measurement Points

© Bloor Homes • 470B 4.4

BLOOR HOMES

These particulars are intended as a preliminary guide for prospective purchasers and should not be relied upon. The elevational treatment for individual house types shows a typical arrangement. Details of materials and design treatments may vary. Any artist impressions shown are not intended to represent any particular plot. Purchasers are advised to inspect the layout plan to establish the arrangement of the house and surrounding property. Internal layouts show a general arrangement which may vary from plot to plot. Room sizes given are approx. overall finished room sizes and subject to normal building tolerances (ie ± 75mm). In all instances purchasers are advised to inspect plot specific information available from our sales team. Nothing in these particulars or verbal assurance shall form or constitute part of any contract, and are given without any responsibility on behalf of Bloor Homes.

**GROVIER
THREE
BEDROOM
HOME**

BLOOR HOMES



A three bedroom semi-detached home with a perfectly proportioned lounge and a stunning open plan kitchen / dining room with a separate utility room, cloakroom and French doors opening onto the rear garden. Upstairs the spacious master suite is complete with an en suite shower room.

GROVIER

**A STYLISH THREE BEDROOM
SEMI-DETACHED HOME**

**GROVIER
THREE
BEDROOM
HOME**

FIRST FLOOR:

BEDROOM 1
2.58m x 2.71m
8'6" x 8'11"

EN SUITE

BEDROOM 2
2.58m x 2.43m
8'6" x 8'0"

BEDROOM 3
1.95m x 2.30m
6'5" x 7'7"

BATHROOM



GROUND FLOOR:

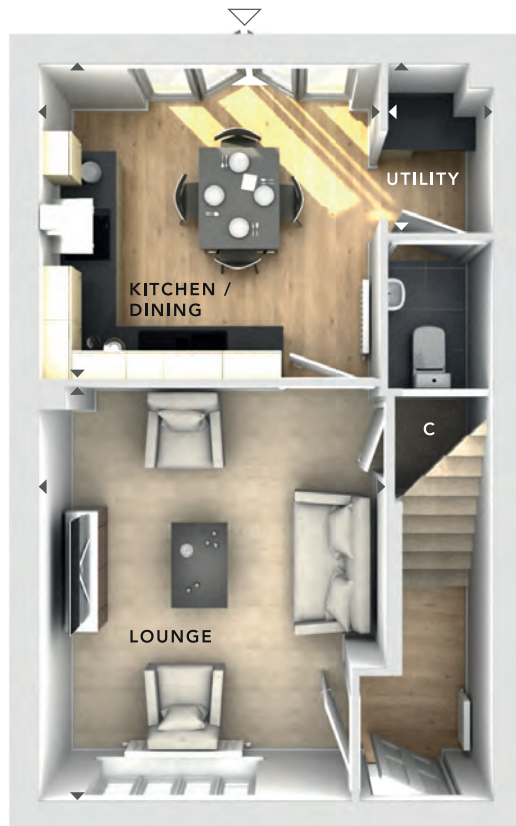
LOUNGE
3.60m x 4.22m
11'10" x 13'10"

KITCHEN / DINING
3.48m x 3.19m
11'5" x 10'5"

UTILITY
1.05m x 1.70m
3'5" x 5'7"

CLOAKS

**FIRST
FLOOR**



**GROUND
FLOOR**

C	- Storage
△	- External Access
◀▶	- Measurement Points
© Bloor Homes • 389B 4.4	



These particulars are intended as a preliminary guide for prospective purchasers and should not be relied upon. The elevational treatment for individual house types shows a typical arrangement. Details of materials and design treatments may vary. Any artist impressions shown are not intended to represent any particular plot. Purchasers are advised to inspect the layout plan to establish the arrangement of the house and surrounding property. Internal layouts show a general arrangement which may vary from plot to plot. Room sizes given are approx. overall finished room sizes and subject to normal building tolerances (i.e. ± 75mm). In all instances purchasers are advised to inspect plot specific information available from our sales team. Nothing in these particulars or verbal assurance shall form or constitute part of any contract, and are given without any responsibility on behalf of Bloor Homes.

DAWLISH
FOUR
BEDROOM
HOME

BLOOR HOMES



A four bedroom detached home comprising a spacious lounge and impressive kitchen / dining / family area with a bay window, and French doors opening onto the rear garden. Downstairs also includes a utility, study and cloakroom. Upstairs boasts four double bedrooms and the family bathroom, complete with a bath and separate shower enclosure. Bedrooms 1 and 2 feature en-suite shower rooms with the master benefitting from fitted wardrobes.

DAWLISH

AN OUTSTANDING FOUR
BEDROOM FAMILY HOME

**DAWLISH
FOUR
BEDROOM
HOME**

FIRST FLOOR:

BEDROOM 1
3.56m x 4.06m
11'8" x 13'4"

EN SUITE

BEDROOM 2
3.14m x 2.69m
10'4" x 8'10"

EN SUITE

BEDROOM 3
3.30m x 3.98m
10'10" x 13'0"

BEDROOM 4
3.23m x 3.39m
10'7" x 11'2"

BATHROOM

GROUND FLOOR:

LOUNGE
3.48m x 4.78m
11'5" x 15'8"

**KITCHEN / DINING /
FAMILY**
9.07m x 3.95m
29'9" x 13'0"

STUDY
3.14m x 2.15m
10'3" x 7'11"

UTILITY CUPBOARD
1.99m x 1.89m
6'6" x 6'2"

CLOAKS



**FIRST
FLOOR**



**GROUND
FLOOR**

W	- Fitted Wardrobes
C	- Storage
△	- External Access
◀▶	- Measurement Points
© Bloor Homes • 496R 4.3	



These particulars are intended as a preliminary guide for prospective purchasers and should not be relied upon. The elevational treatment for individual house types shows a typical arrangement. Details of materials and design treatments may vary. Any artist impressions shown are not intended to represent any particular plot. Purchasers are advised to inspect the layout plan to establish the arrangement of the house and surrounding property. Internal layouts show a general arrangement which may vary from plot to plot. Room sizes given are approx. overall finished room sizes and subject to normal building tolerances (i.e. ± 75mm). In all instances purchasers are advised to inspect plot specific information available from our sales team. Nothing in these particulars or verbal assurance shall form or constitute part of any contract, and are given without any responsibility on behalf of Bloor Homes.



Bloor Homes Southern,
River Reach, Unit 7,
Newbury Business Park,
London Road, Newbury,
Berkshire,
RG14 2PS

southern@bloorhomes.com
www.bloorhomes.com



BLOOR HOMES[®]