



A 3 BEDROOM, 3 BATHROOM, 2 RECEPTION ROOM GROUND FLOOR APARTMENT

Amersham Road, Chalfont St Peter, Gerrards Cross, SL9 0NZ



Amersham Road, Chalfont St Peter, Gerrards Cross, SL9 0NZ

GROUND FLOOR APARTMENT • THREE BEDROOMS • THREE BATHROOMS • GARAGE • DRIVEWAY PARKING • SOUTH-EAST FACING GARDEN • VIEWS ACROSS THE MISBOURNE VALLEY • CHARACTER PROPERTY

Description

A well presented three bedroom ground floor apartment offered to the market in good order throughout. This property is within walking distance to the village centre and within easy reach of highly regarded schools.

The property comprises an entrance hallway leading to reception room to the front and an open-plan kitchen/dining room with French doors leading out onto the private rear garden.

There are three bedrooms with two of them benefitting from ensuite shower rooms and a family bathroom.





The third bedroom leads through to a conservatory with sliding doors giving access to the rear garden.

The property benefits from its own south-east facing rear garden which provides picturesque views across the Misbourne valley. To the front of the property there is ample off street parking.

Location

Gerrards Cross offers a wide range of shopping facilities, as well as a host of independent stores and a good number of varied restaurants, hotels, public houses, an Everyman cinema and community library.

Ideal for the commuter, the motorway network can be accessed at Junction 1 M40 (Denham), linking to the M25, M1, M4 and Heathrow/Gatwick airports, while Gerrards Cross station boasts a speedy Chiltern Rail link to London Marylebone.

Additional Information

Tenure: Leasehold

Lease Length: 973 years remaining

Ground Rent: peppercorn

Local Authority: Buckinghamshire County Council

Council Tax Band: D

Energy Efficiency Rating: D

For additional information, please refer to www.robsonswb.com or call us on: 01923 285525.



Approximate Gross Internal Area = 112.2 sq m / 1,208 sq ft

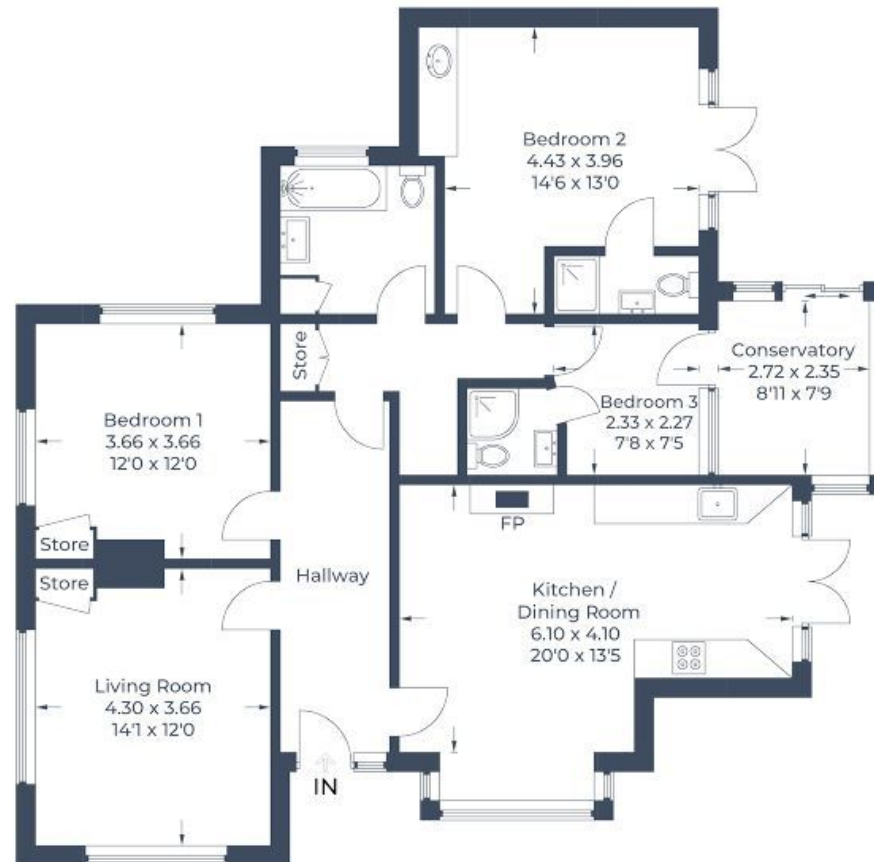


Illustration for identification purposes only,
measurements are approximate, not to scale.
© CJ Property Marketing Produced for Robsons

ROBSONS

2 New Parade, Chorleywood, Hertfordshire, WD3 5NJ
Tel: 01923 285525 Email: chorleywood@robsonswb.com

www.robsonswb.com