



A WELL MAINTAINED THREE BEDROOM SEMI DETACHED FAMILY HOME

Stag Lane, Chorleywood, Herts, WD3 5HW

ROBSONS

Stag Lane, Chorleywood, Herts, WD3 5HW

LIVING/DINING ROOM • KITCHEN • UTILITY ROOM • CONSERVATORY • GUEST WC • THREE BEDROOMS • FAMILY BATHROOM • OFF-STREET PARKING • SCOPE TO EXTEND (STPP)

Description

Perfectly placed for local amenities, schools and transport links, is this three bedroom semi detached family home with potential to extend (STPP).

The ground floor comprises an entrance hallway, a spacious open plan living/dining room with feature fireplace and a conservatory overlooking the garden. The kitchen features a range of fitted units and space for freestanding appliances.

Off the kitchen is a room currently used for storage, which would make an ideal home office/gym. This room has patio doors opening out to the rear garden and a door through to the large utility room. Completing the ground floor is a guest WC.





To the first floor there are three well-appointed bedrooms, two boasting fitted wardrobes, and a family bathroom.

Externally, this family home offers a well maintained garden laid to lawn with shrubs and flower beds. To the front is a driveway providing off-street parking and a garden.

Location

Chorleywood Village's facilities include a wide choice of boutique shops, coffee houses and restaurants. Marks & Spencer and Waitrose food halls are available in Rickmansworth. The area is also well served for sought after state and private schools for all ages. Leisure facilities include golf courses, cricket, football clubs, horse riding and fitness centres, together with Chorleywood Common and Rickmansworth Aquadrome, providing acres of outdoor space for walks and further activities. The Metropolitan and Main lines at Chorleywood Station offer a frequent service into London and beyond. The M25 is easily accessible via Junctions 17 and 18.

Additional Information

Tenure: Freehold

Local Authority: Three Rivers District Council

Council Tax Band: E

Energy Efficiency Rating: C

For additional information, please refer to www.robsonswb.com or call us on: 01923 285525.



Approximate Gross Internal Area = 118.8 sq m / 1279 sq ft

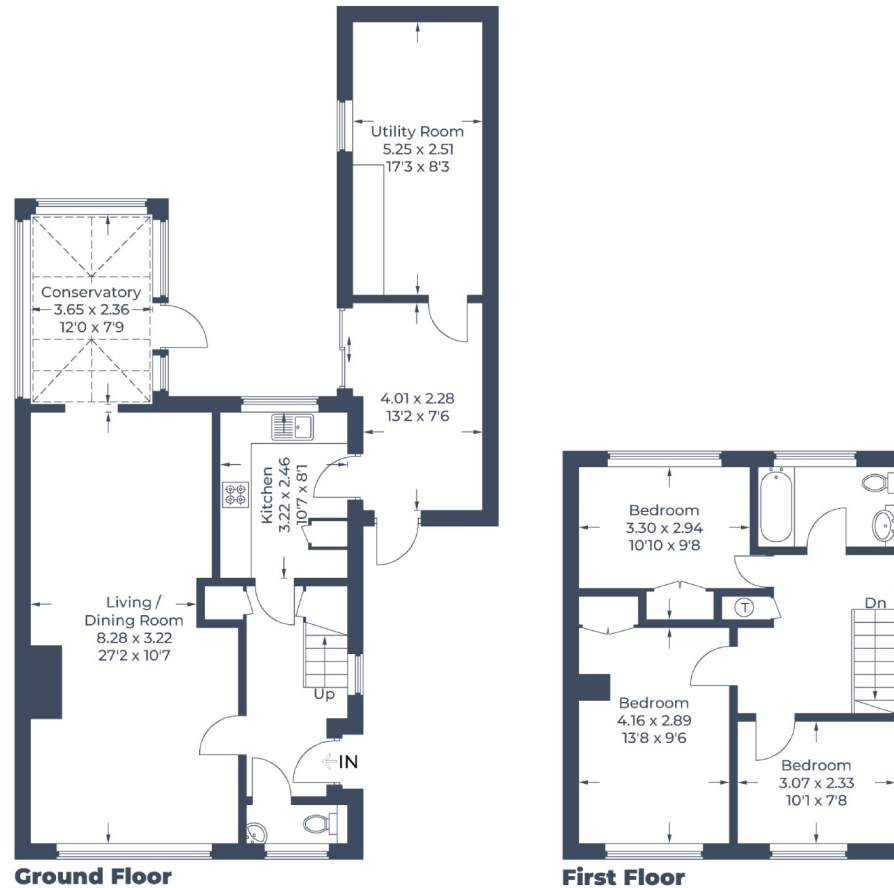


Illustration for identification purposes only,
measurements are approximate, not to scale.
© CJ Property Marketing Produced for Robsons

ROBSONS

2 New Parade, Chorleywood, Hertfordshire, WD3 5NJ
Tel: 01923 285525 Email: chorleywood@robsonswb.com

www.robsonswb.com

Important notice: Robsons, their clients and any joint agents give notice that 1: They are not authorised to make or give any representations or warranties in relation to the property either here or elsewhere, either on their own behalf or on behalf of their client or otherwise. They assume no responsibility for any statement that may be made in these particulars. These particulars do not form part of any offer or contract and must not be relied upon as statements or representations of fact. 2: Any areas, measurements or distances are approximate. Plot sizes and dimensions are taken from Promap and are approximate. The text, photographs and plans are for guidance only and are not necessarily comprehensive. It should not be assumed that the property has all necessary planning, building regulation or other consents and Robsons have not tested any services, equipment or facilities. Purchasers must satisfy themselves by inspection or otherwise.