



**CHARMING THREE BEDROOM CHARACTER COTTAGE IN DESIRABLE LOCATION**

Chorleywood Bottom, Chorleywood, Herts, WD3 5JQ



## CHARMING THREE BEDROOM CHARACTER COTTAGE IN DESIRABLE LOCATION

Chorleywood Bottom, Chorleywood,  
Herts, WD3 5JQ

- RECEPTION ROOM
- KITCHEN
- SNUG
- PRINCIPAL BEDROOM WITH ENSUITE  
SHOWER ROOM
- TWO FURTHER BEDROOMS
- FAMILY BATHROOM
- GARDEN ROOM/OFFICE
- ATTRACTIVE REAR GARDEN

Robsons are pleased to showcase this charming three bedroom cottage situated in Chorleywood Bottom.

The ground floor comprises of a bright reception room with a feature gas fire which continues through to a beautiful modern kitchen with a generous range of base and wall units and integrated appliance. Off the kitchen is a snug with a door leading into the garden.





To the first floor is the principal bedroom with an ensuite shower room, a further bedroom and a spacious bathroom with a bath and overhead shower and under sink storage. On the second floor is third double bedroom with a velux window.

Externally this property enjoys a beautiful private easy to maintain garden with steps leading to a raised decked area to enjoy al fresco dining. There is also a snug/office.

Chorleywood Village's facilities include a wide choice of boutique shops, coffee houses and restaurants. Marks & Spencer and Waitrose food halls are available in Rickmansworth. The area is also well served for sought after state and private schools for all ages. Leisure facilities include golf courses, cricket, football clubs, horse riding and fitness centres, together with Chorleywood Common and Rickmansworth Aquadrome, providing acres of outdoor space for walks and further activities. The Metropolitan Line is a short walk from the property and Main lines at Chorleywood Station offer a frequent service into London and beyond. The M25 is easily accessible via Junctions 17 and 18.

Tenure: Freehold

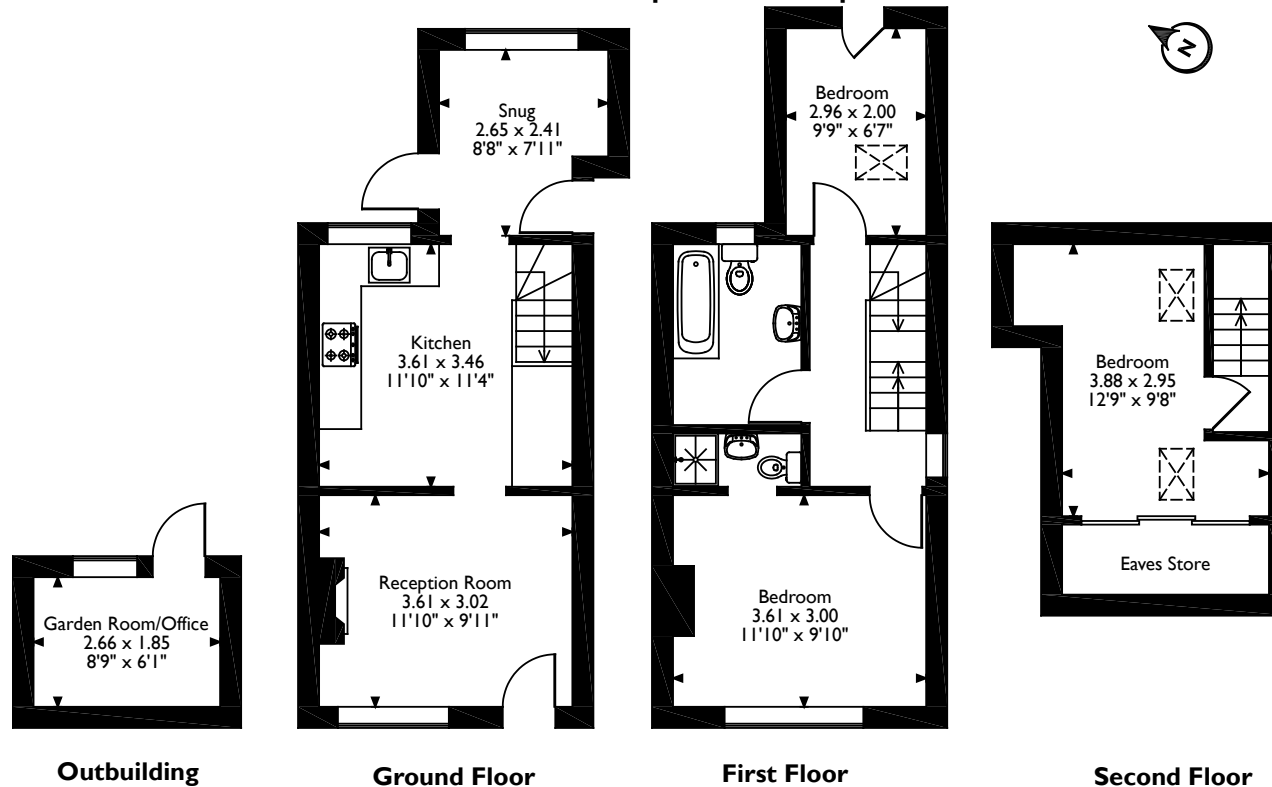
Local Authority: Three Rivers District Council

Council Tax: Band: E

Energy Efficiency Rating: D



Chorleywood Bottom Chorleywood, Chorleywood, Hertfordshire  
 Approximate Gross Internal Area  
 Main House = 72 Sq M/775 Sq Ft  
 Outbuilding = 5 Sq M/54 Sq Ft  
 Total = 77 Sq M/829 Sq Ft



Please note that the location of doors, windows and other items are approximate and this floorplan is to be used for illustrative purposes only. Unauthorized reproduction is prohibited.



2 New Parade, Chorleywood, Rickmansworth WD3 5NJ  
 Tel: 01923 285525 [chorleywood@robsonswb.com](mailto:chorleywood@robsonswb.com)

[www.robsonswb.com](http://www.robsonswb.com)

[www.the-londonoffice.co.uk](http://www.the-londonoffice.co.uk)  
 40 ST JAMES'S PLACE SW1