

# Grenfell Road

Maidenhead • • SL6 1FG

Guide Price: £270,000



coopers  
est 1986



# Grenfell Road

Maidenhead • • SL6 1FG

\* No Onward Chain \*

Well presented second floor, two bedroom apartment only a stones' throw from Maidenhead Train station. This property benefits from have a secure allocated parking space, en suite to master and a Juliette balcony in the living room.

No Onward Chain

En Suite to Master

Allocated Parking Space

Walking Distance to Train Station

Town Centre Location

Open Plan Living Space

Second Floor Apartment

Juliette Balcony

These particulars are intended as a guide and must not be relied upon as statements of fact. Your attention is drawn to the Important Notice on the last page.

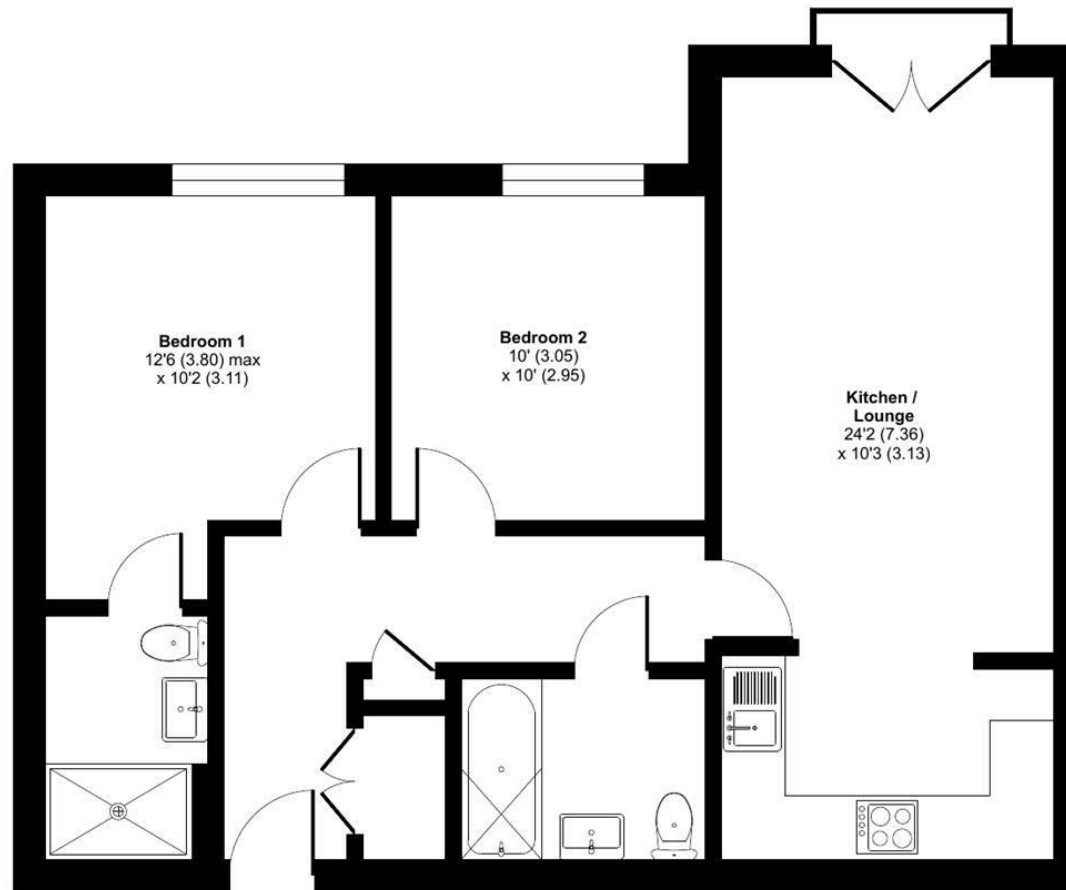




## Grenfell Road, Maidenhead, SL6

Approximate Area = 675 sq ft / 62.7 sq m

For identification only - Not to scale



SECOND FLOOR



Floor plan produced in accordance with RICS Property Measurement 2nd Edition, Incorporating International Property Measurement Standards (IPMS2 Residential). © nchecom 2025. Produced for Coopers. REF: 1375122

**coopers**  
est 1986

**coopers**  
est 1986

**42 Queen Street, Maidenhead,  
SL6 1HZ**  
maidenhead@coopersresidential.co.uk

**CoopersResidential.co.uk**

Energy Efficiency Rating		
Energy efficient - lower running costs	Current	Potential
Very energy efficient - A		
Energy efficient - B		
Decent - C		
Below average - D		
Below average - E		
Below average - F		
Not energy efficient - G		
Not energy efficient - higher running costs		
England & Wales		
EU Directive 2002/91/EC		

Important Notice: These particulars, whilst believed to be accurate are set out as a general outline only for guidance and do not constitute any part of an offer or contract. Intending purchasers should not rely on them as statements or representation of fact, but must satisfy themselves by inspection or otherwise has the authority to make or give any representation or warranty in respect of the property.