

# Lyneham Gardens

Maidenhead • • SL6 6SJ

: £500,000



coopers  
est 1986



# Lyneham Gardens

Maidenhead • • SL6 6SJ

\*NO CHAIN\*

Situated in the sought-after area of Furze Platt, this well-presented family home features three bedrooms and a versatile outbuilding.

NO CHAIN

Desirable Location

Outbuilding

Modern Kitchen

Family Home

Generous Open Plan Living/Dining

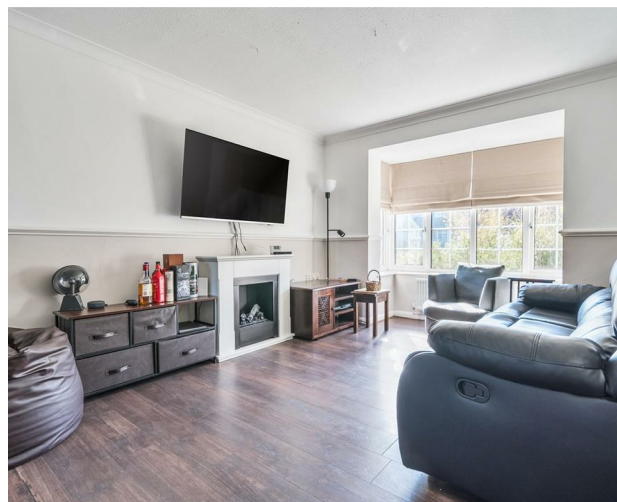
Residential Area

Three Bedrooms

Close To Local Amenities

Walking Distance To Great Schools

These particulars are intended as a guide and must not be relied upon as statements of fact. Your attention is drawn to the Important Notice on the last page.





Upon entering, you are greeted by a spacious living/dining room, enhanced by a charming bay window that fills the space with natural light. The modern kitchen is well-equipped with Bosch appliances, ample storage, and generous workspace, offering direct access to the rear garden. A ground-floor WC adds to the home's practicality.

Upstairs, the property offers three well-proportioned bedrooms, including a generously sized master and a spacious second bedroom. A family bathroom completes the first floor.

Externally, the home benefits from a private garden with convenient access to rear parking. The property also includes a half garage and a renovated office space, ideal for a home workspace or studio. Additionally, a further outbuilding provides extra storage or the potential for a workshop.

Located within easy reach of Maidenhead town centre, excellent schools, transport links, and green spaces, this home is perfectly positioned for modern family living.







### Schools:

Alwyn Infant School 0.2 miles  
 Furze Platt Infant School 0.4 miles  
 Furze Platt Junior School 0.4 miles



### Train:

Furze Platt Station 0.9 miles  
 Maidenhead Station 1.4 miles  
 Cookham Station 2.2 miles



### Car:

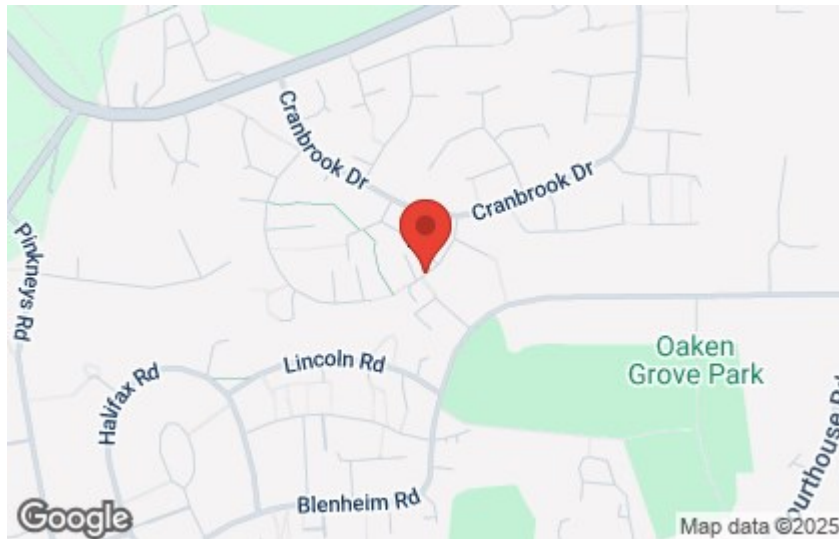
M4, A40, M25, M40



### Council Tax Band:

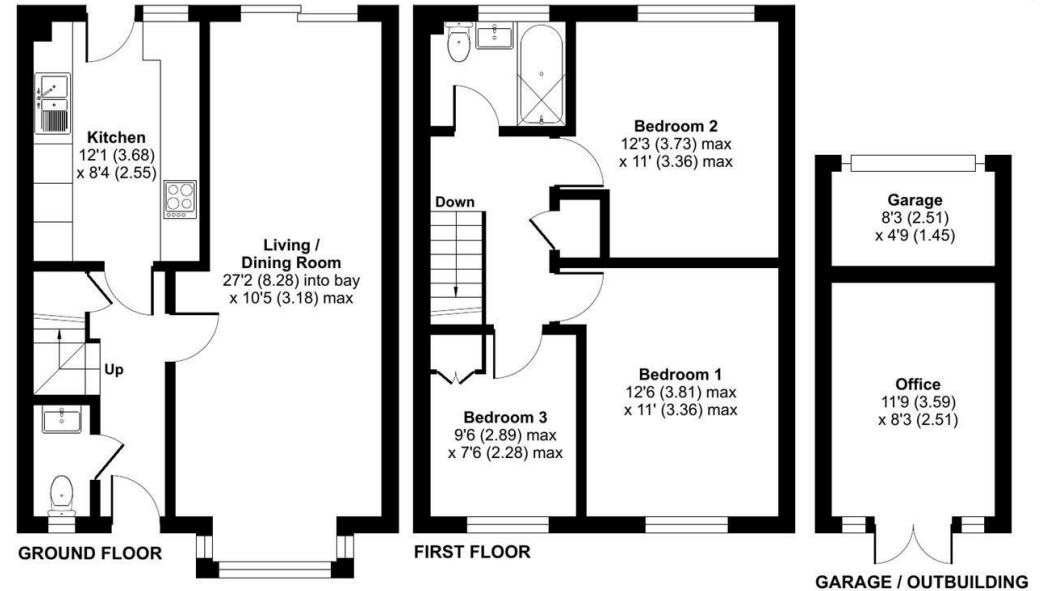
E

(Distances are straight line measurements from centre of postcode)



## Lyneham Gardens, Maidenhead, SL6

Approximate Area = 888 sq ft / 82.4 sq m  
 Garage = 39 sq ft / 3.6 sq m  
 Outbuilding = 97 sq ft / 9 sq m  
 Total = 1024 sq ft / 95 sq m  
 For identification only - Not to scale



Floor plan produced in accordance with RICS Property Measurement 2nd Edition, incorporating International Property Measurement Standards (IPMS2 Residential). © richcom 2025. Produced for Coopers. REF: 1262041

**coopers**  
est 1986

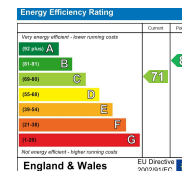
**coopers**  
est 1986

01628 232 550

42 Queen Street, Maidenhead,  
SL6 1HZ

maidenhead@coopersresidential.co.uk

CoopersResidential.co.uk



Important Notice: These particulars, whilst believed to be accurate are set out as a general outline only for guidance and do not constitute any part of an offer or contract. Intending purchasers should not rely on them as statements or representation of fact, but must satisfy themselves by inspection or otherwise has the authority to make or give any representation or warranty in respect of the property.