

Church View

Maidenhead • • SL6 3JQ
: £685,000



coopers
est 1986

Church View

Maidenhead • • SL6 3JQ

A beautifully presented three-bedroom family home located in the sought-after village of White Waltham.

Desirable Cul-De-Sac

Three Well Sized Bedrooms

Extended Property

Downstairs WC

Separate Utility Room

Two Reception Rooms

Driveway Parking

Shepherds Hut With Ensuite

Great School Catchments

Local Amenities

These particulars are intended as a guide and must not be relied upon as statements of fact. Your attention is drawn to the Important Notice on the last page.





A charming family home featuring a spacious bay-fronted living room and an open-plan kitchen/dining area with bi-folding doors leading to the patio. The property benefits from a separate utility room with WC, three well-proportioned bedrooms with ample storage, and a modern family bathroom. A versatile Shepherd's Hut with its own shower room offers an ideal space for a home office or guest accommodation.

The garden includes a patio area for outdoor seating, a lawn to the rear, and a Shepherd's Hut with an ensuite. There is also driveway parking for numerous vehicles with ranch-style fencing.

Church View is located in the highly desirable village of White Waltham within a private road, offering convenient access to major motorway links, local amenities, and picturesque countryside walks with stunning rural views.





Schools:

White Waltham CofE Academy 0.45 miles
Woodlands Park Primary School 0.48 miles
Cox Green School 1.2 miles



Train:

Maidenhead Station 2.3 miles
Furze Platt Station 2.9 miles
Taplow Station 4.0 miles



Car:

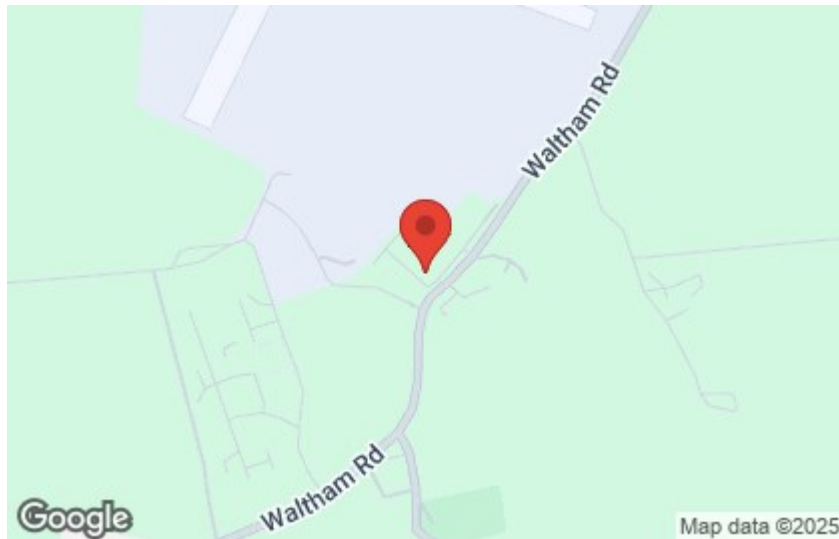
M4, A40, M25, M40



Council Tax Band:

E

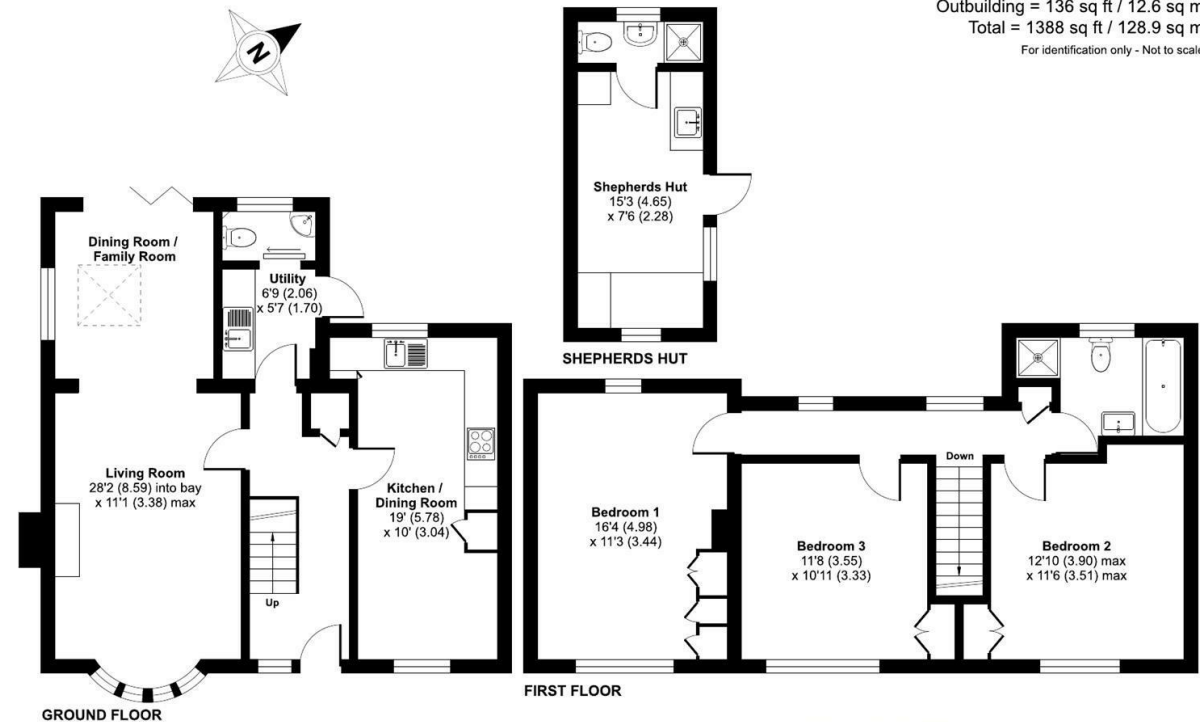
(Distances are straight line measurements from centre of postcode)



Church View, White Waltham, Maidenhead, SL6

Approximate Area = 1252 sq ft / 116.3 sq m
Outbuilding = 136 sq ft / 12.6 sq m
Total = 1388 sq ft / 128.9 sq m

For identification only - Not to scale



Floor plan produced in accordance with RICS Property Measurement 2nd Edition, Incorporating International Property Measurement Standards (IPMS2 Residential). © nichcom 2025. Produced for Coopers. REF: 1285729

coopers
est 1986

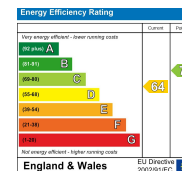
coopers
est 1986

01628 232 550

42 Queen Street, Maidenhead,
, SL6 1HZ

maidenhead@coopersresidential.co.uk

CoopersResidential.co.uk



Important Notice: These particulars, whilst believed to be accurate are set out as a general outline only for guidance and do not constitute any part of an offer or contract. Intending purchasers should not rely on them as statements or representation of fact, but must satisfy themselves by inspection or otherwise has the authority to make or give any representation or warranty in respect of the property.