

# 1 Kingston Close

Maidenhead • • SL6 1BF

: £335,000



coopers  
est 1986

# 1 Kingston Close

Maidenhead • • SL6 1BF

Located within half a mile from Maidenhead Train station, this two bedroom and two-bathroom apartment offers modern and spacious living with an open plan kitchen/living room built to the highest specification. Furthermore, this apartment offers a private balcony, an allocated parking space and well-maintained communal grounds.

900+ years remaining on lease

Spacious open plan living area

Balcony

Walking distance to Elizabeth Line

Built in 2020 and still within warrantee

Allocated parking space

En-suite to master

Close proximity to town centre

Closed onward chain

Integrated kitchen appliances

These particulars are intended as a guide and must not be relied upon as statements of fact. Your attention is drawn to the Important Notice on the last page.







### **Property**

Built in 2020, the apartment benefits from 768 sq ft of open plan living, two double bedrooms with the master benefiting from an en-suite shower room and a further family bathroom.

### **Outside**

This well-appointed apartment offers a private balcony, an allocated parking space, bike shed and large communal grounds.

### **Location**

Located for easy access to the Elizabeth line/M Maidenhead train station, local amenities and transport links to the M4/M40/A404. Oldfield Primary school is a short distance away and the apartment is nearby to PureGym, Lidl and other amenities. There is also direct access to Braywick Nature Reserve.







### Schools:

Oldfield Primary School 0.4 miles  
Desborough College 0.4 miles



### Train:

Maidenhead Station 0.3 miles  
Furze Platt Station 1.2 miles  
Taplow Station 1.6 miles



### Car:

M4, A40, M25, M40



### Council Tax Band:

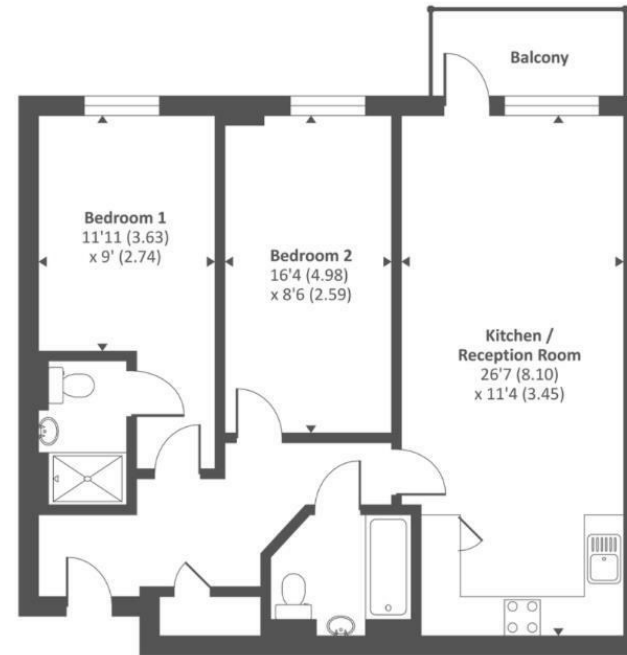
C

(Distances are straight line measurements from centre of postcode)



Approximate Area = 778 sq ft / 72.3 sq m

For identification only - Not to scale



Second floor



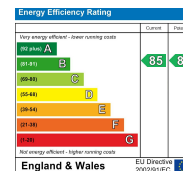
**coopers**  
est 1986

01628 232 550

42 Queen Street, Maidenhead,  
, SL6 1HZ

maidenhead@coopersresidential.co.uk

**CoopersResidential.co.uk**



Important Notice: These particulars, whilst believed to be accurate are set out as a general outline only for guidance and do not constitute any part of an offer or contract. Intending purchasers should not rely on them as statements or representation of fact, but must satisfy themselves by inspection or otherwise has the authority to make or give any representation or warranty in respect of the property.