

Money Row Green

Maidenhead • • SL6 2NA
: £1,950,000



coopers
est 1986

Money Row Green

Maidenhead • • SL6 2NA

NO CHAIN

Set within beautiful wrap-around grounds, this expansive single-story residence has been meticulously renovated by the current owners.

Extensively updated over the years

NO CHAIN

Heated swimming pool

23ft sitting room with a gas burner/stove

In the heart of Holyport village

Spacious open-plan kitchen/dining/family room

Integral double garage

Dressing room & en-suite to master

Five double bedrooms

Separate utility room

These particulars are intended as a guide and must not be relied upon as statements of fact. Your attention is drawn to the Important Notice on the last page.





The home features a grand, open-plan kitchen, dining, and family room with Siemens appliances and large sliding doors that open directly onto the south-facing terrace, creating an ideal blend of indoor and outdoor living. Adjacent is the impressive double-aspect sitting room with a contemporary gas-fired burner, as well as a separate utility room, plant room, and playroom. The luxurious primary bedroom suite includes a spacious dressing room and a four-piece en-suite bathroom. In addition, there are four double bedrooms, serviced by a stylish shower room and a separate four-piece bathroom.

Located at the end of a secluded driveway in the highly sought-after Holyport area, this property is surrounded by mature trees, providing privacy and a peaceful setting. With an integral double garage and extensive off-road parking, there is ample space for multiple vehicles. At the rear, a beautifully maintained south-facing garden awaits, featuring a heated outdoor swimming pool and a charming pond with a water feature. The garden also includes a greenhouse and a vegetable garden with raised beds, adding to the home's appeal.

Holyport is a desirable village south of Maidenhead situated close by to Holyport village Green with local amenities such as village pubs, shops and cafe. Easy access to the M4/M25/A404 and M40. There are a selection of great local schools close to the property including Holyport College and Holyport Church of England School.





Schools:

Holyport CofE Primary School 0.4 miles
Holyport College 0.6 miles
Braywick Court School 1.3 miles



Train:

Maidenhead Station 2.1 miles
Taplow Station 2.9 miles
Furze Platt Station 3.1 miles



Car:

M4, A404, M25, M40



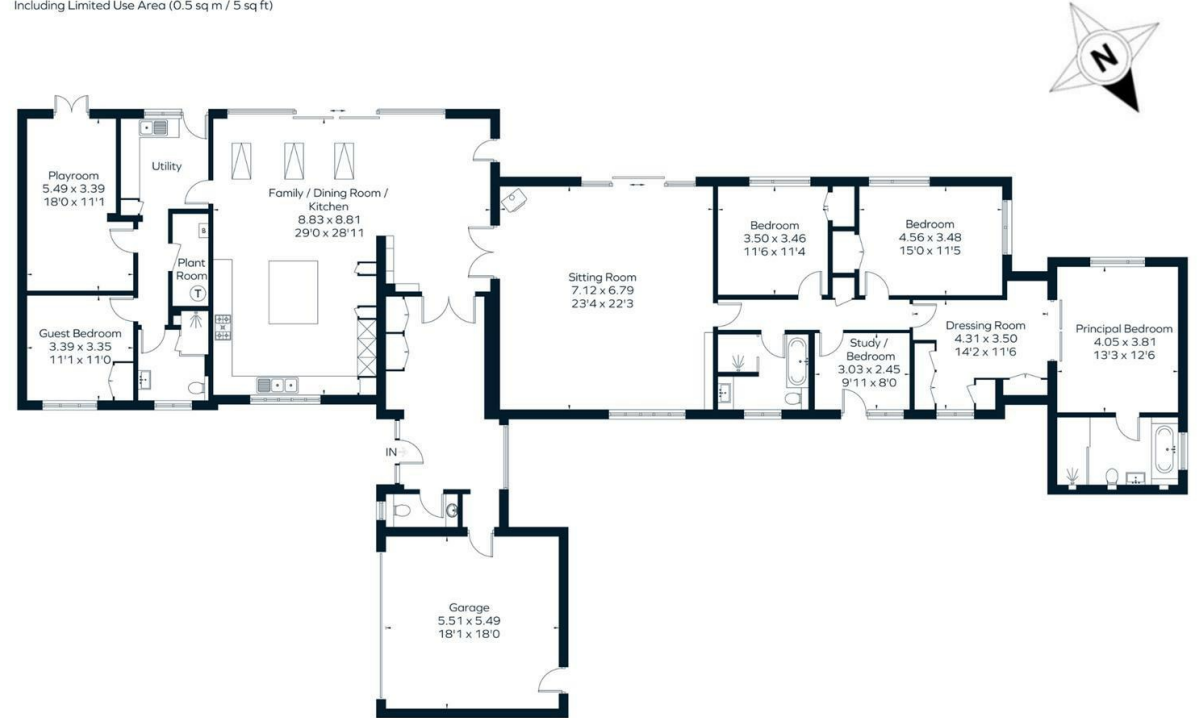
Council Tax Band:

F

(Distances are straight line measurements from centre of postcode)



Approximate Area = 328 sq m / 3530 sq ft (including Garage)
Including Limited Use Area (0.5 sq m / 5 sq ft)



Surveyed and drawn in accordance with the International Property Measurement Standards (IPMS 2: Residential)
fourwalls-group.com 298419

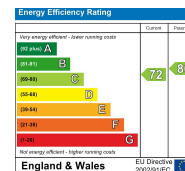


01628 232 550

42 Queen Street, Maidenhead,
SL6 1HZ

maidenhead@coopersresidential.co.uk

CoopersResidential.co.uk



Important Notice: These particulars, whilst believed to be accurate are set out as a general outline only for guidance and do not constitute any part of an offer or contract. Intending purchasers should not rely on them as statements or representation of fact, but must satisfy themselves by inspection or otherwise has the authority to make or give any representation or warranty in respect of the property.