

Waltham Road

Maidenhead • • SL6 3NH

: £925,000



coopers
est 1986

Waltham Road

Maidenhead • • SL6 3NH

Beautiful Four Bedroom Detached Family Home in Desirable White Waltham Area

Desirable Location

Exceeding 2,000 square feet

Expansive driveway

Integrated Garage

Utility room

Five reception rooms

En-suite to master

Spacious garden

White Waltham locality

Access to major motorway links

These particulars are intended as a guide and must not be relied upon as statements of fact. Your attention is drawn to the Important Notice on the last page.





Property

Upon entering this impressive property, you are welcomed by a charming hallway. The spacious reception room features a fireplace and leads to a formal dining room with French doors opening to a bright conservatory. The conservatory provides access to a study and the garden. The ground floor also includes a large kitchen/breakfast room with integrated appliances, a separate utility room with garage entrance, and an additional reception room.

Moving to the first floor, you will find four double bedrooms, with ample built-in storage in bedrooms one, two, and three. The four-piece family bathroom includes built-in storage and double basin sinks. The principal bedroom benefits from an en-suite shower room.

Outside

To the front of the house you are greeted by a large pebbled driveway with ample parking space for several vehicles, leading to an integral garage. Towards the back of the property, you will find an extensive lawn and a patio area.

Location

Situated in the sought-after White Waltham village, Waltham Road offers excellent access to motorway links, local amenities, and beautiful rural views with convenient access to lovely walks.



Schools:

Woodlands Park Primary School
Manor Green School



Train:

Maidenhead Station 2.3 miles
Furze Platt Station 2.9 miles
Taplow Station 4.0 miles



Car:

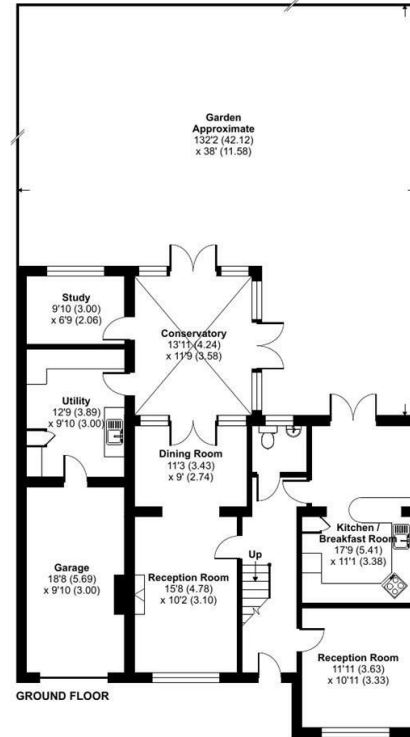
M4, A40, M25, M40



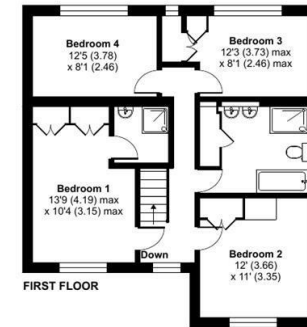
Council Tax Band:

E

(Distances are straight line measurements from centre of postcode)



GROUND FLOOR



FIRST FLOOR

Waltham Road, Maidenhead, SL6

Approximate Area = 2081 sq ft / 193.3 sq m (includes garage)

For identification only - Not to scale



Floor plan produced in accordance with RICS Property Measurement Standards incorporating International Property Measurement Standards (IPMS2 Residential). © nichecom 2024. Produced for Coopers. REF: 1196024

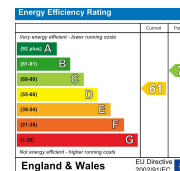


01628 232 550

42 Queen Street, Maidenhead,
, SL6 1HZ

maidenhead@coopersresidential.co.uk

CoopersResidential.co.uk



Important Notice: These particulars, whilst believed to be accurate are set out as a general outline only for guidance and do not constitute any part of an offer or contract. Intending purchasers should not rely on them as statements or representation of fact, but must satisfy themselves by inspection or otherwise has the authority to make or give any representation or warranty in respect of the property.

