

Woodfield Drive

M Maidenhead • • SL6 4NX
: £1,650,000



coopers
est 1986

Woodfield Drive

Maidenhead • • SL6 4NX

An outstanding five bedroom detached family home extended and updated by the current owners on the prestigious private Sandisplatt estate with huge potential to extend further STPP.

Impressive Kitchen/family room

Cu-de-sac

Sought after location

Large Driveway

Triple garage

Landscaped garden

Gym

Updated & Extended by the current owners

Air conditioning to master suite

Huge potential to extend STPP

These particulars are intended as a guide and must not be relied upon as statements of fact. Your attention is drawn to the Important Notice on the last page.





Property

The property has been completely refurbished and extended in recent years offering spacious accommodation and modern living. Comprising of spacious entrance hall with w/c and storage cupboard, large formal living room, study/bedroom 5, incredible open plan kitchen with pantry, dining room and family room with lantern with electric blind and French doors onto the patio and garden. Further rooms completing the downstairs accommodation include a utility room, gym, double garage and further single garage. Upstairs accommodation includes four double bedrooms with the master suite benefiting from an en-suite, there is a further family bathroom and galleried landing. The property has huge potential to further extend to the side and into the loft STPP.

Outside

To the front of the house is a large driveway for multiple cars, lawn area and mature hedging to both sides. Side access leads to the landscaped and incredibly private garden benefiting from large patio perfect for entertaining and al fresco dining.

Location

Set within the sought after and Private Sandisplatt estate, a semi-rural location close to National Trust land and Pinkney's Green and with easy access to Maidenhead, Marlow and Henley On Thames. The A404, M40 and M4 are close by.



Schools:

Newlands girls school 0.4 miles
St Edmunds Campion Catholic Primary School and Nursery 0.3 miles



Train:

Maidenhead Station 1.6 miles
Furze Platt Station 1.8 miles
Cookham Station 3.2 miles



Car:

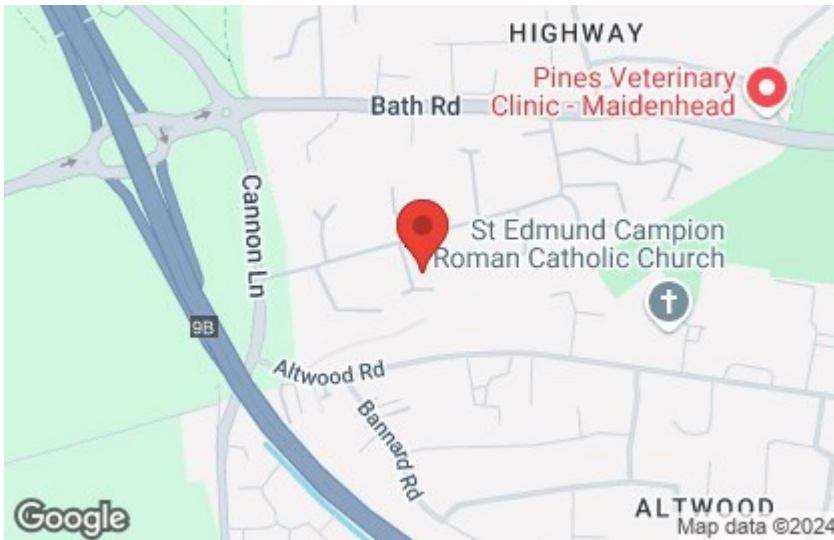
M4, A40, M25, M40



Council Tax Band:

G

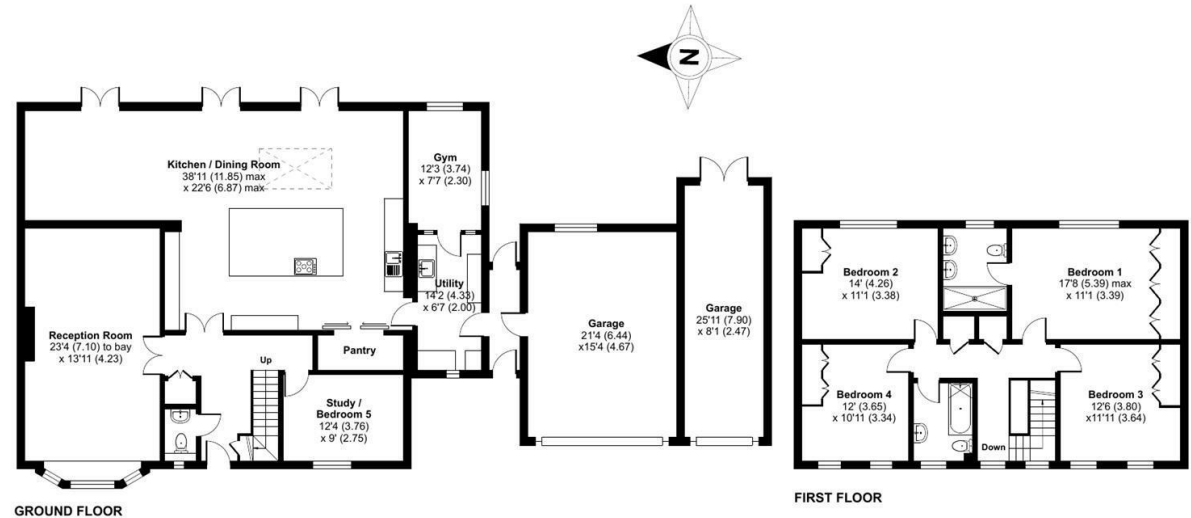
(Distances are straight line measurements from centre of postcode)



Woodfield Drive, Maidenhead, SL6

Approximate Area = 2559 sq ft / 237.7 sq m
Garages = 534 sq ft / 49.6 sq m
Total = 3093 sq ft / 287.3 sq m

For identification only - Not to scale



Floor plan produced in accordance with RICS Property Measurement Standards incorporating International Property Measurement Standards (IPMS2 Residential). © nichecom 2024. Produced for Coopers. REF: 1176691

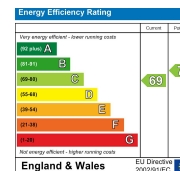


01628 232 550

42 Queen Street, Maidenhead,
, SL6 1HZ

maidenhead@coopersresidential.co.uk

CoopersResidential.co.uk



Important Notice: These particulars, whilst believed to be accurate are set out as a general outline only for guidance and do not constitute any part of an offer or contract. Intending purchasers should not rely on them as statements or representation of fact, but must satisfy themselves by inspection or otherwise has the authority to make or give any representation or warranty in respect of the property.