

# Langton Close

Maidenhead • • SL6 6HR

PCM: £1,500 PCM



coopers  
est 1986

# Langton Close

Maidenhead • • SL6 6HR

Beautifully presented, fully furnished two-bedroom maisonette in an excellent location.

Second floor Maisonette

Quiet Cul-de-sac

Modern kitchen

Generously sized living room

Two tier garden with patio and decking

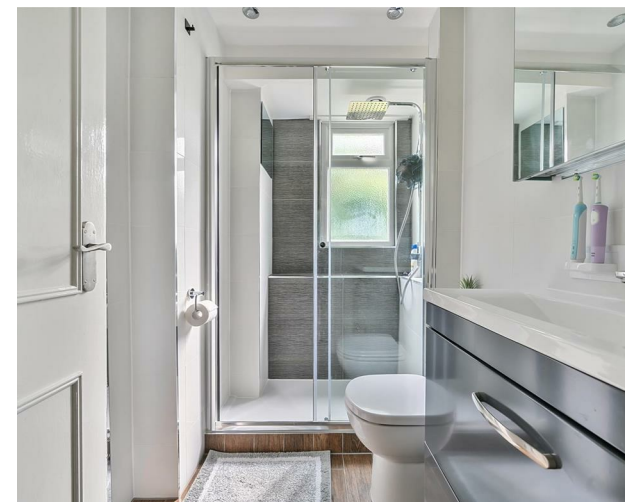
Local amenities nearby

Close links to M4,M25 /A404

Furze Platt area

New kitchen and bathroom

These particulars are intended as a guide and must not be relied upon as statements of fact. Your attention is drawn to the Important Notice on the last page.





### Property

A beautifully presented furnished second-floor maisonette featuring a generously sized living/dining room with a stunning fireplace, a modern kitchen with integrated appliances, a newly renovated bathroom, and two double bedrooms

### Outside

Benefitting from a two-tier garden with a decking area

### Location

Located in a quiet cul-de-sac in Furze Platt, this property is within walking distance to Maidenhead Town. Closeby to Furze Platt Train Station and Maidenhead Station's Elizabeth Line.



### Schools:

Furze Platt Infant and Junior School 0.2 miles  
Furze Platt Senior School 0.4 miles  
St Piran's School 0.3 miles



### Train:

Furze Platt Station 0.5 miles  
Maidenhead Station 1.0 miles  
Cookham Station 2.0 miles



### Car:

M4, A40, M25, M40



### Council Tax Band:

C

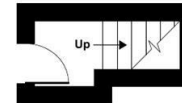
(Distances are straight line measurements from centre of postcode)



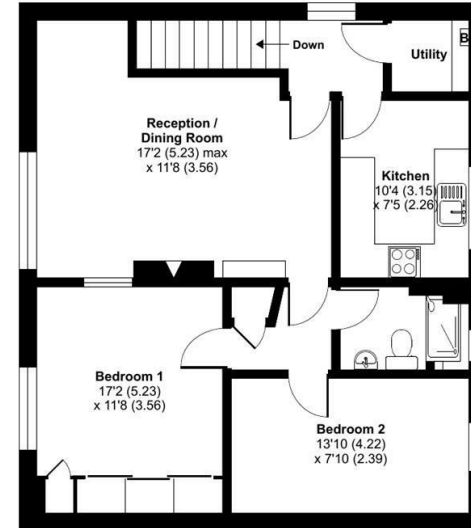
## Langton Close, Maidenhead, SL6

Approximate Area = 746 sq ft / 69.3 sq m

For identification only - Not to scale



GROUND FLOOR



FIRST FLOOR



Floor plan produced in accordance with RICS Property Measurement Standards incorporating International Property Measurement Standards (IPMS2 Residential). © nichecom 2024. Produced for Coopers. REF: 1136133

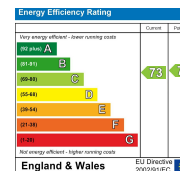


01628 232 550

42 Queen Street, Maidenhead,  
SL6 1HZ

maidenhead@coopersresidential.co.uk

CoopersResidential.co.uk



Important Notice: These particulars, whilst believed to be accurate are set out as a general outline only for guidance and do not constitute any part of an offer or contract. Intending purchasers should not rely on them as statements or representation of fact, but must satisfy themselves by inspection or otherwise has the authority to make or give any representation or warranty in respect of the property.

coopers  
est 1986