

Courthouse Road

Maidenhead • • SL6 6JE
: £600,000



coopers
est 1986

Courthouse Road

Maidenhead • • SL6 6JE

Beautifully extended and newly renovated three-bedroom Victorian semi-detached home, situated in a highly desirable area near St. Marks and Pinkney's Green.

Period property

Gorgeous bi-fold doors

Semi-detached

Driveway parking

South-west facing rear garden

Loft conversion

Renovated throughout the years

Immaculate condition

Close to Maidenhead Train Station & Town Centre

Well regarded schools near by

These particulars are intended as a guide and must not be relied upon as statements of fact. Your attention is drawn to the Important Notice on the last page.





Property

A modern family home featuring an open-plan kitchen and dining area with bi-fold doors, a separate living room with a feature fireplace, and a convenient downstairs cloakroom. The first floor comprises of two bedrooms, a large hallway suitable for a home office, and a modern bathroom. The second floor boasts a private, generously sized master bedroom complete with a contemporary en-suite bathroom.

Outside

Benefitting from driveway parking and bi-fold doors in the open-plan kitchen and dining area, this home effortlessly extends into a beautifully paved south-west facing garden.

Location

Courthouse Road is a perfectly located home in a sought-after area, close to St Marks and Pinkney's Green. The home is in close proximity to well-regarded local schools, a short 1.2 miles from Maidenhead Town Centre, Elizabeth Line and nearby to great motorway links.





Schools:

All Saints Church of England Junior School 0.1 miles
Altwood Church of England School 0.4 miles
Alwyn Infant School 0.5 miles



Train:

Maidenhead Station 1.0 miles
Furze Platt Station 1.1 miles
Cookham Station 2.7 miles



Car:

M4, A40, M25, M40



Council Tax Band:

D

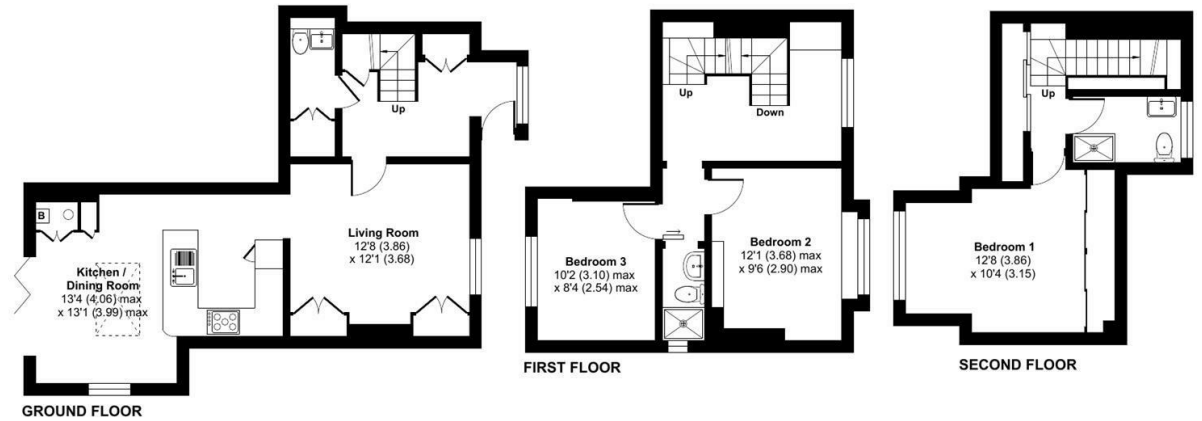
(Distances are straight line measurements from centre of postcode)



Courthouse Road, Maidenhead, SL6

Approximate Area = 1163 sq ft / 108 sq m

For identification only - Not to scale



Floor plan produced in accordance with RICS Property Measurement Standards incorporating International Property Measurement Standards (IPMS2 Residential). © nlcocom 2024. Produced for Coopers. REF: 1139682

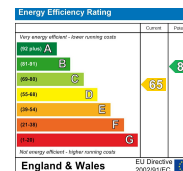


01628 232 550

42 Queen Street, Maidenhead,
, SL6 1HZ

maidenhead@coopersresidential.co.uk

CoopersResidential.co.uk



Important Notice: These particulars, whilst believed to be accurate are set out as a general outline only for guidance and do not constitute any part of an offer or contract. Intending purchasers should not rely on them as statements or representation of fact, but must satisfy themselves by inspection or otherwise has the authority to make or give any representation or warranty in respect of the property.

coopers
est 1986