

Alfred Street

Reading • • RG1 7LY
: £319,000



coopers
est 1986

Alfred Street

Reading • • RG1 7LY

* NO CHAIN *

Offering to the market this well presented two bedroom, two bathroom town Centre apartment, with no onward chain and located within walking distance of Reading town Centre and a mainline train station.

NO CHAIN

Undercroft parking

Town centre apartment

Benefiting from 676sq ft of living

15th floor

Modern living

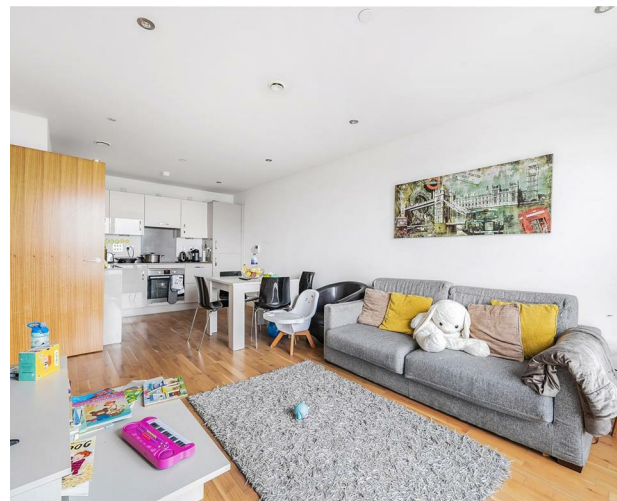
Lift

En-suite to master

Open plan living

Long lease

These particulars are intended as a guide and must not be relied upon as statements of fact. Your attention is drawn to the Important Notice on the last page.





Property

Enjoying 676 square feet of open-plan living, dining, and kitchen space with access to a lift and an undercroft parking space. This roomy apartment features two double bedrooms, one with an en-suite, as well as an additional bathroom.

Outside

Boasting well-maintained communal spaces, a concierge desk, and elevator access. Additionally, residents can enjoy a courtyard exclusively for their use.

Location

Positioned in the heart of Reading, within close proximity to the town centre, with its array of riverside shops, dining options, and the mainline station (Crossrail).





Schools:

Civitas Academy Primary 0.22 Miles
Oxford Road Community School Primary 0.39 Miles



Train:

Reading Station 0.34 Miles
Reading West 0.49 Miles
Tilehurst 2.42 Miles
Earley 2.83 Miles



Car:

M4, A40, M25, M40



Council Tax Band:

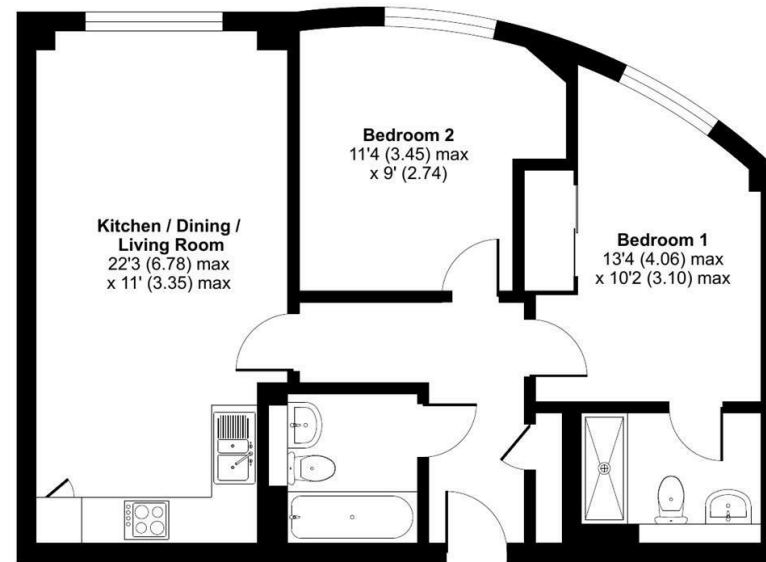
(Distances are straight line measurements from centre of postcode)



Alfred Street, Reading, RG1

Approximate Area = 676 sq ft / 62.8 sq m

For identification only - Not to scale



FIRST FLOOR



Floor plan produced in accordance with RICS Property Measurement Standards incorporating International Property Measurement Standards (IPMS2 Residential). © nrichcom 2024. Produced for Coopers. REF: 1108230



01628 232 550

42 Queen Street, Maidenhead,
, SL6 1HZ

maidenhead@coopersresidential.co.uk

CoopersResidential.co.uk

| Energy Efficiency Rating | | Current | Target |
|--|---|---------|--------|
| Very energy efficient - lower running costs | A | | |
| Energy efficient - lower running costs | B | | |
| Decent energy efficiency - lower running costs | C | | |
| Some energy efficiency - lower running costs | D | | |
| Not very energy efficient - higher running costs | E | | |
| Very poor energy efficiency - higher running costs | F | | |
| Least energy efficient - higher running costs | G | | |
| England & Wales | | 86 | 86 |

Important Notice: These particulars, whilst believed to be accurate are set out as a general outline only for guidance and do not constitute any part of an offer or contract. Intending purchasers should not rely on them as statements or representation of fact, but must satisfy themselves by inspection or otherwise has the authority to make or give any representation or warranty in respect of the property.

