

Ray Street

Maidenhead • • SL6 8PN
: £450,000



coopers
est 1986

Ray Street

Maidenhead • • SL6 8PN

No onward Chain - Potential to extend STPP -
Semi-detached two-bedroom Bungalow in
need of modernisation, located close to
Maidenhead Town Centre and Maidenhead
Riverside.

No Chain

Gated property

Close to Maidenhead Riverside

Ample parking

Semi-detached Bungalow

Two double bedrooms

Spacious Plot

- Walking distance to Maidenhead Station & Elizabeth line

Close links to A404/M4 and M25

Local amenities nearby

These particulars are intended as a guide and must not be relied upon as statements of fact. Your attention is drawn to the Important Notice on the last page.





Property

Two bedroom bungalow in need of improvement on a spacious plot close to Maidenhead Riverside.

Outside

Offering ample parking for numerous cars, a gated entrance and garden.

Location

Within easy access to Maidenhead Town Centre, Maidenhead train station, a number of amenities including local shops and schools. The A404/M4 and M25 are easily accessible.





Schools:

RBWM Alternative Learning Provision 0.1 miles
Forest Bridge School 0.5 miles



Train:

Maidenhead Station 0.7 miles
Furze Platt Station 1.1 miles
Taplow Station 1.2 miles



Car:

M4, A40, M25, M40



Council Tax Band:

C

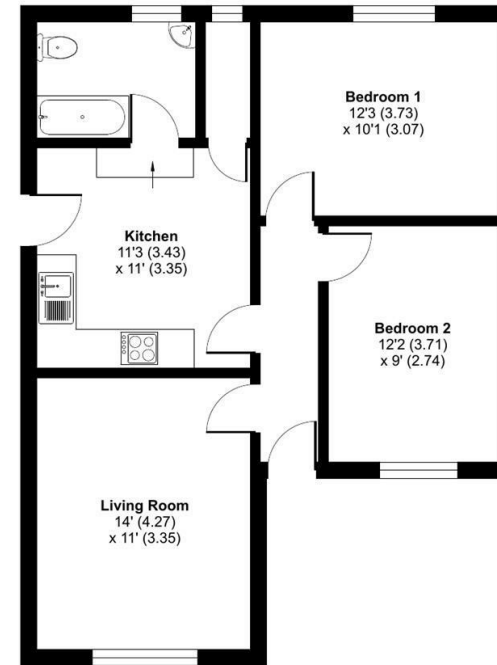
(Distances are straight line measurements from centre of postcode)



The Drive, Ray Street, Maidenhead, SL6

Approximate Area = 647 sq ft / 60.1 sq m

For identification only - Not to scale



GROUND FLOOR



Floor plan produced in accordance with RICS Property Measurement Standards incorporating International Property Measurement Standards (IPMS2 Residential). © nichecom 2024. Produced for Coopers. REF: 1092158

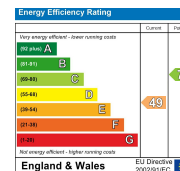


01628 232 550

42 Queen Street, Maidenhead,
, SL6 1HZ

maidenhead@coopersresidential.co.uk

CoopersResidential.co.uk



Important Notice: These particulars, whilst believed to be accurate are set out as a general outline only for guidance and do not constitute any part of an offer or contract. Intending purchasers should not rely on them as statements or representation of fact, but must satisfy themselves by inspection or otherwise has the authority to make or give any representation or warranty in respect of the property.

coopers
est 1986