



**GRIFFIN**  
THE PROPERTY PEOPLE



## St. Marys Lane , Upminster, RM14 2QP

£475,000

\* Hillmount Court is a purpose-built block consisting of six one- and two-bedroom luxury apartments each with secure parking in a fantastic location \*

#### Entrance/Parking:

Secure entrance to car parking area with one allocated parking space per property with option of electric charging. Ample Bicycle Storage. Entry fob system to main door access.

#### Kitchen / Lounge

Open plan living with apartments benefitting from breakfast bar island, handleless matt finish kitchen cupboards including integrated fridge freezer, dishwasher, single oven and induction hob quartz worktops with splash back also in quartz.

#### Bathrooms / En-suite

Vanity unit and basin, chrome mixer taps, rainfall showers, Nordic Stone tiles.

#### Bedrooms

Luxury carpets to bedrooms, ensuite to all master bedrooms (2 beds) and access to balcony.

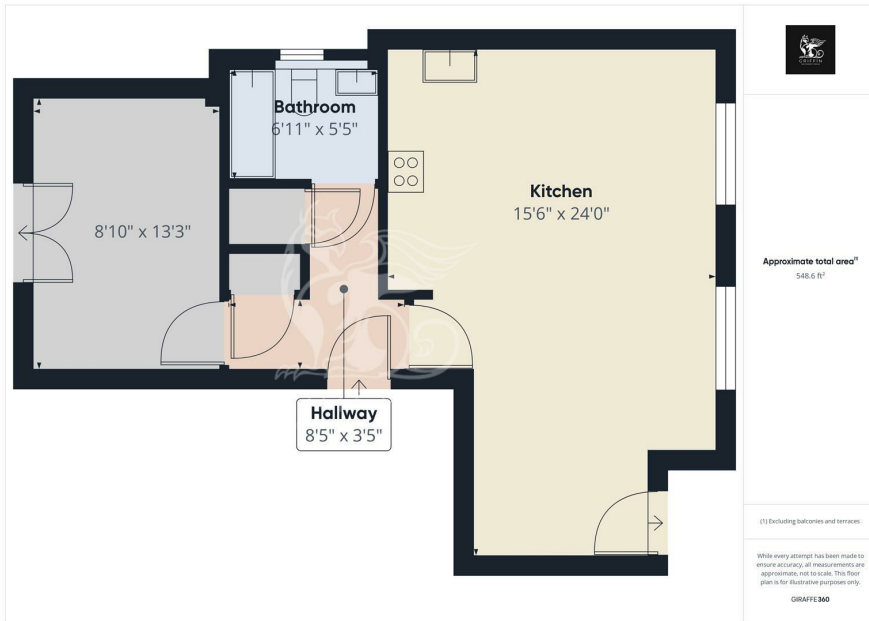
- PENTHOUSE ONE BEDROOM APARTMENT
- TWO SIZEABLE BALCONIES
- EN-SUITE BATHROOMS ON ALL TWO BEDROOMS
- NEW 125 YEAR LEASE
- HIGH QUALITY FITTED KITCHEN WITH QUARTZ
- ONE ALLOCATED SPACE PLUS OPTIONAL ELECTRIC CHARGE POINT
- LUXURY NEW DEVELOPMENT
- AVAILABLE NOW FOR VIEWINGS

### Viewing

Please contact our Upminster Office on 01708 321322 if you wish to arrange a viewing appointment for this property or require further information.



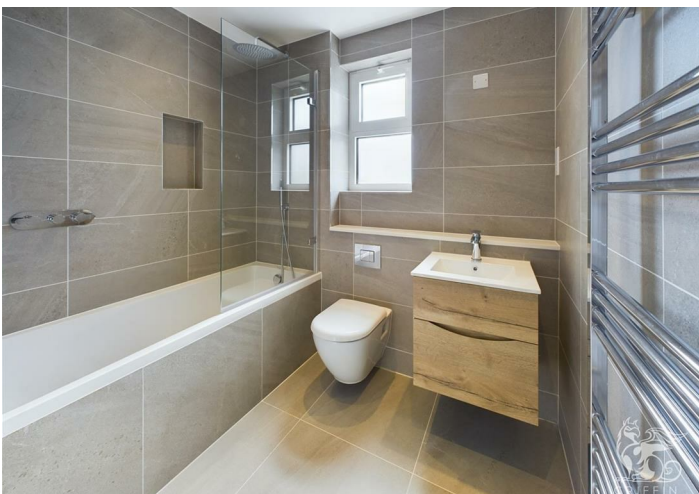
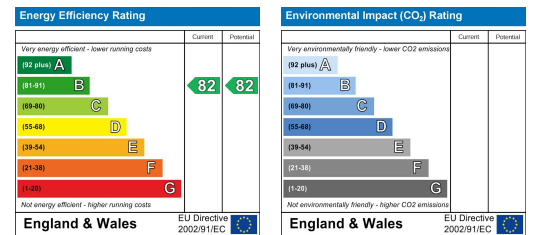
## Floor Plan



## Area Map



## Energy Efficiency Graph



These particulars, whilst believed to be accurate are set out as a general outline only for guidance and do not constitute any part of an offer or contract. Intending purchasers should not rely on them as statements of representation of fact, but must satisfy themselves by inspection or otherwise as to their accuracy. No person in this firm's employment has the authority to make or give any representation or warranty in respect of the property.