



GRIFFIN

THE PROPERTY PEOPLE



Tamar Close , Upminster, RM14 1QH

Offers in excess of £450,000

****VIEWING COMMENCING 20TH JULY**** For sale is this well-maintained terraced property situated in a quiet location. The property is in good condition and offers a homely atmosphere ideal for families looking for a peaceful environment.

The house features three comfortably sized bedrooms. The first is a master bedroom that is elegantly designed with built-in wardrobes and excellent natural light. The second bedroom is a double room also equipped with integrated wardrobes, offering ample storage space. The third bedroom is a single room, ideally suited for a child's room or a home office.

A well-equipped kitchen forms the heart of this home, fitted with modern appliances that ensure cooking is a pleasure rather than a chore.

The property also boasts a single reception room, providing a cosy space for family relaxation and entertainment.

The Energy Performance Certificate (EPC) rating is D, and the council tax falls under band D.

One of the unique features of this property is the garden. This outdoor space provides a peaceful retreat where you can enjoy some fresh air and tranquility.

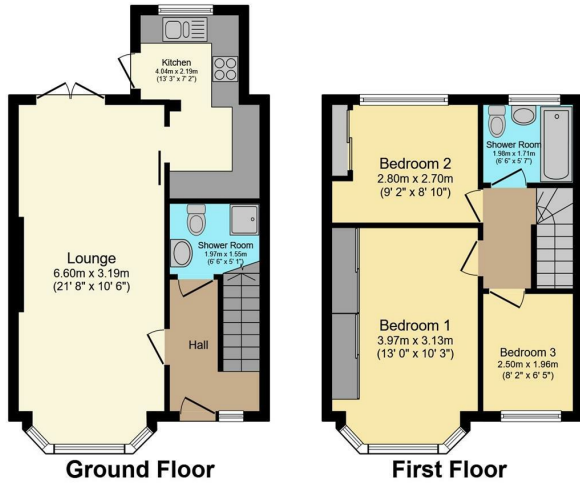
- Well-maintained terraced property
- Quiet location
- Three comfortably sized bedrooms
- Master bedroom with built-in wardrobes
- Modern well-equipped kitchen
- Ideal for families
- Council tax band D

Viewing

Please contact our Upminster Office on 01708 321322 if you wish to arrange a viewing appointment for this property or require further information.



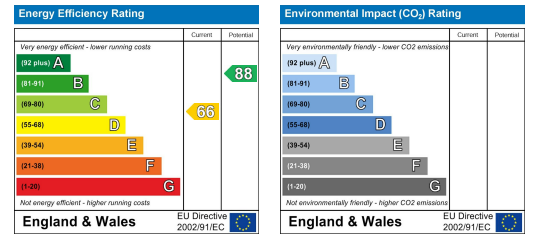
Floor Plan



Area Map



Energy Efficiency Graph



Total floor area 77.7 m² (837 sq.ft.) approx

This floor plan is for illustrative purposes only. It is not drawn to scale. Any measurements, floor areas (including any total floor area), openings and orientation are approximate. No details are guaranteed, they cannot be relied upon for any purpose and they do not form part of any agreement. No liability is taken for any error, omission or misstatement. A party must rely upon its own inspection(s). Powered by www.focalagent.com



These particulars, whilst believed to be accurate are set out as a general outline only for guidance and do not constitute any part of an offer or contract. Intending purchasers should not rely on them as statements of representation of fact, but must satisfy themselves by inspection or otherwise as to their accuracy. No person in this firm's employment has the authority to make or give any representation or warranty in respect of the property.