



# GRIFFIN

THE PROPERTY PEOPLE



## Stour Way , Upminster, RM14 1QQ

Guide price £425,000

\* Guide Price £425,000- 450,000 \*

Discover this charming three bedroom terrace property, ideally situated near Upminster Town Centre, C2C and District Line Station. Boasting ample off-street parking, gas central heating, and extensive double glazing, this well-presented home offers a seamless blend of functionality and style. Step inside to find a welcoming entrance hall leading to a cozy lounge/diner with a feature fireplace and bay window, a fitted kitchen with modern amenities, and three spacious bedrooms flooded with natural light. Outside, enjoy a private rear garden with a patio area and a timber summerhouse, while the frontage provides convenient off-street parking. Don't miss out on the opportunity to call this property home, schedule your viewing today!

- MID TERRACE HOME
- THREE BEDROOMS
- GOOD CONDITION THROUGHOUT
- SOUGHT AFTER RM14 AREA
- IDEAL FOR FIRST TIME BUYERS
- CLOSE TO ENGAYNE PRIMARY SCHOOL
- EASY ACCESS TO MAJOR ROAD LINKS

### Viewing

Please contact our Upminster Office on 01708 321322 if you wish to arrange a viewing appointment for this property or require further information.



3



1



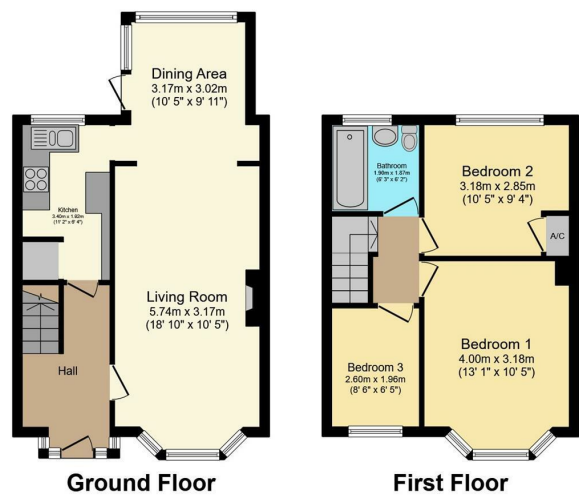
2



D



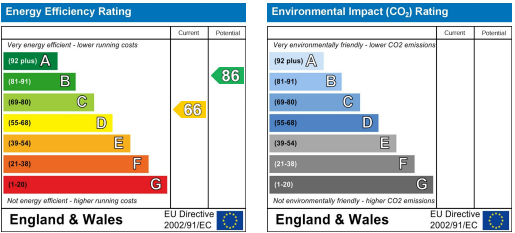
Floor Plan



Area Map



Energy Efficiency Graph



These particulars, whilst believed to be accurate are set out as a general outline only for guidance and do not constitute any part of an offer or contract. Intending purchasers should not rely on them as statements of representation of fact, but must satisfy themselves by inspection or otherwise as to their accuracy. No person in this firms employment has the authority to make or give any representation or warranty in respect of the property.