



# GRIFFIN

THE PROPERTY PEOPLE



## Whitworth Avenue

Harold Wood, Romford, RM3 7GP

Asking price £450,000

Introducing a charming 4 bedroom link detached house, situated on a popular development in Noak Hill. This family home features a beautifully fitted kitchen, a spacious reception room which offers ample room for relaxation and entertainment and a contemporary bathroom complete with shower bath. To the Rear of the property you'll find private south facing garden which makes for a great sun trap during summer. Conveniently, the property also comes with a driveway suitable for 2 cars.

- Off Street Parking
- Well Presented
- Ready To Move In
- Private Garden
- Convenient Bus Routes
- EPC: C78

Don't miss your chance to see this unique property. Call Griffin to book a viewing now!

### Viewing

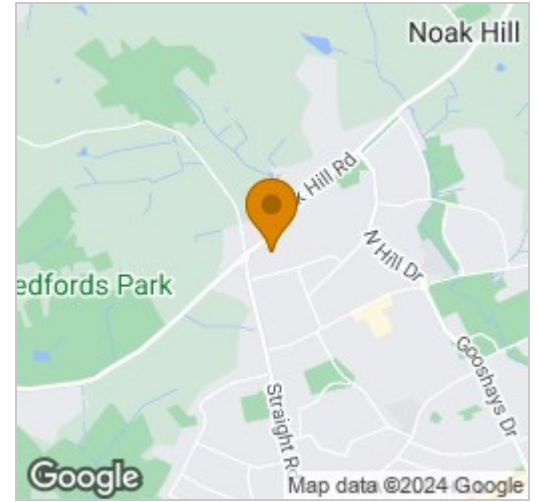
Please contact our Upminster Office on 01708 321322 if you wish to arrange a viewing appointment for this property or require further information.



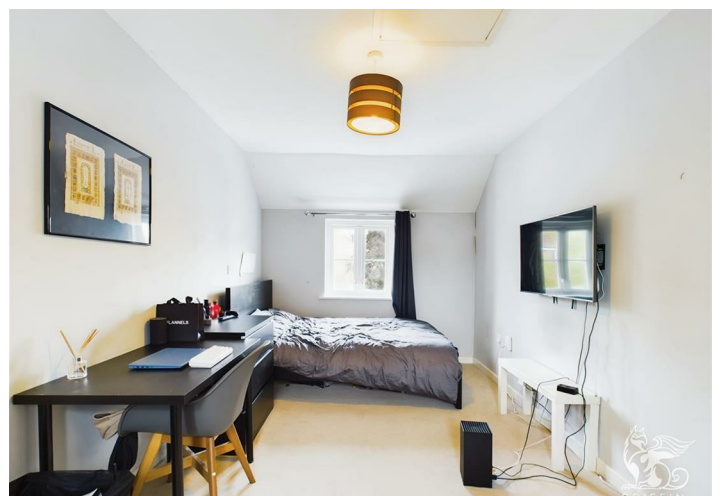
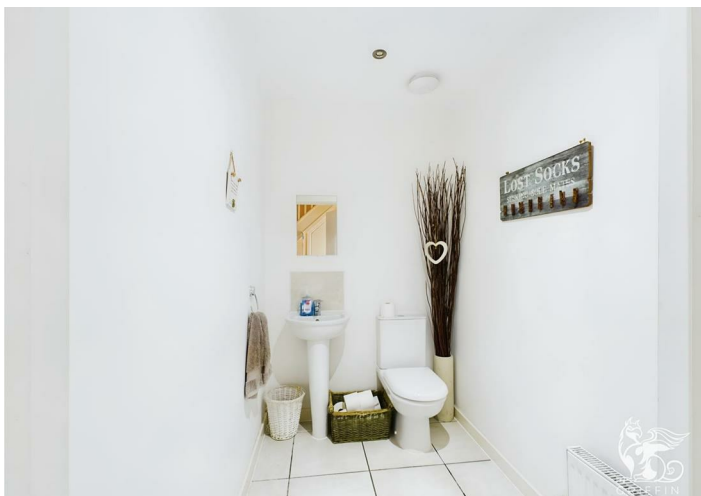
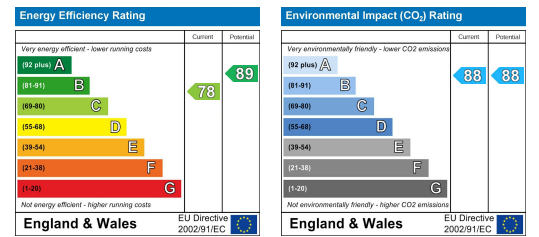
# Floor Plan



# Area Map



# Energy Efficiency Graph



These particulars, whilst believed to be accurate are set out as a general outline only for guidance and do not constitute any part of an offer or contract. Intending purchasers should not rely on them as statements of representation of fact, but must satisfy themselves by inspection or otherwise as to their accuracy. No person in this firm's employment has the authority to make or give any representation or warranty in respect of the property.