



# GRIFFIN

THE PROPERTY PEOPLE



## Hannards Way

Hainault, Ilford, IG6 3TB

Offers in excess of £425,000

Griffin are proud to present to the market this fantastic three-bedroom end of terrace house, a short distance from the local park, excellent amenities and transport links the area has to offer.


The property boasts bright and airy living accommodation with garage and a garden to both front and rear. This lovely family home offers an inviting entrance hall, spacious lounge/ diner with dual aspect, modern kitchen with plenty of cupboard space. On the upper level you have three great sized bedrooms. Stylish family bathroom completes the accommodation. The garden has been paved for easy maintenance benefitting from a shed and rear access.

Located in Hainault on a quiet residential road, which is walking distance from the local shops, restaurants, cafes, high street supermarkets and public transport. This fantastic house must be seen to be fully appreciated for its excellent size and potential to create a lovely family home.

### Viewing

Please contact our Upminster Office on 01708 321322 if you wish to arrange a viewing appointment for this property or require further information.

- MID TERRACE HOME
- THREE BEDROOMS
- OPEN PLAN LOUNGE/ DINER
- CLOSE TO HAINAULT FOREST
- MAJOR ROAD LINKS INTO LONDON
- GARAGE EN-BLOC

 3  1  1  D



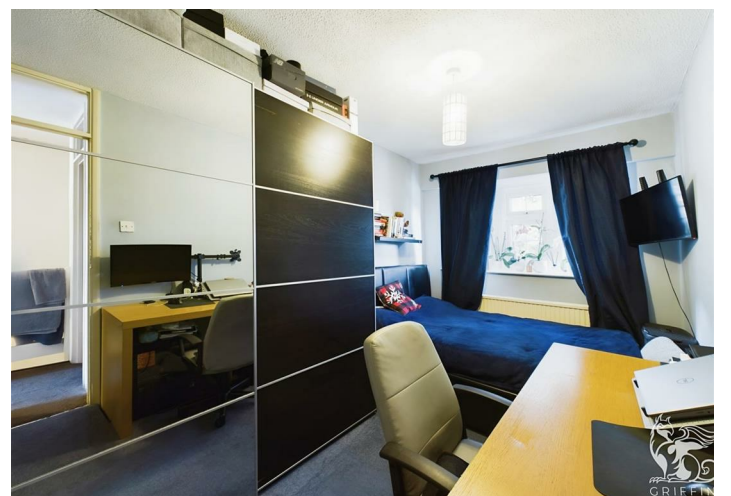
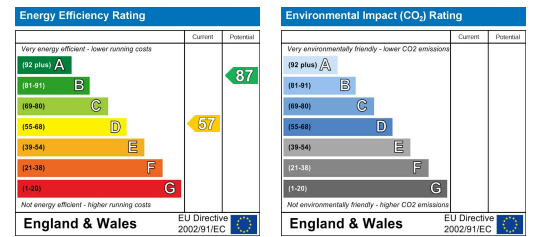
# Floor Plan



# Area Map



# Energy Efficiency Graph



These particulars, whilst believed to be accurate are set out as a general outline only for guidance and do not constitute any part of an offer or contract. Intending purchasers should not rely on them as statements of representation of fact, but must satisfy themselves by inspection or otherwise as to their accuracy. No person in this firm's employment has the authority to make or give any representation or warranty in respect of the property.