



GRIFFIN

THE PROPERTY PEOPLE



Ripple Road , Barking, IG11 7PE

£37,500 Per annum

Griffin Commercial are proud to offer this very unique, period property to the market.

**** Offers in Region of £37,500 ****

E Class Offices and Workshop Businesses

Located directly opposite to the Vicarage Field Shopping centre on the busy Ripple Road, so a prime location for any business.

Approximately 1800 Square foot

Only a stones throw away from Barking mainline station with direct links into London, and only a short distance from A124, M25, A12.

Shell & core offers potential tenants a blank canvas so there are opportunities a plenty!

Deposit amount: Ask agent

*** Utilities not included ***

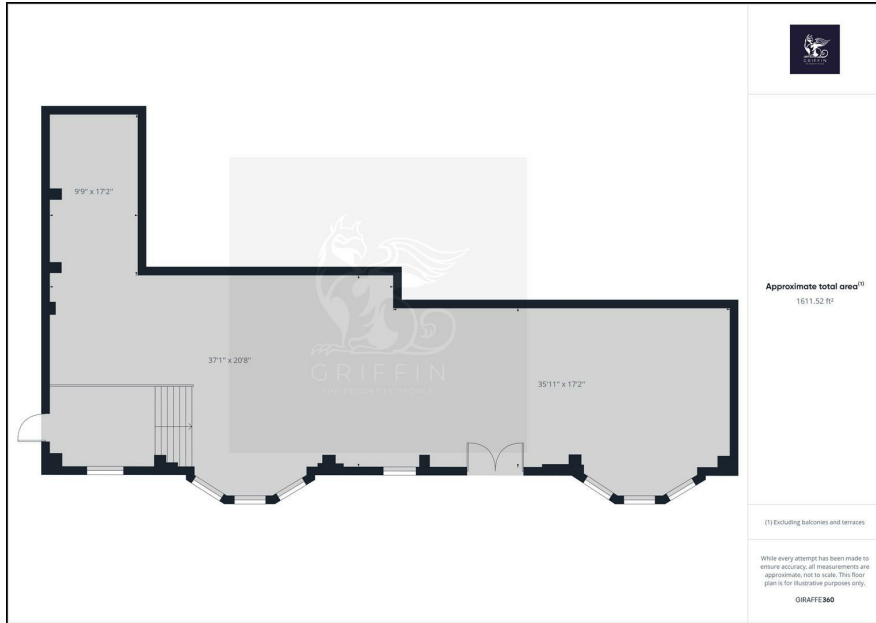
- AVAILIABLE NOW
- APPROX 1800 SQFT
- UNIQUE, PERIOD PROPERTY
- SHELL & CORE
- PRIME LOCATION
- E CLASS
- EPC: 83D

Viewing

Please contact our Upminster Office on 01708 321322 if you wish to arrange a viewing appointment for this property or require further information.



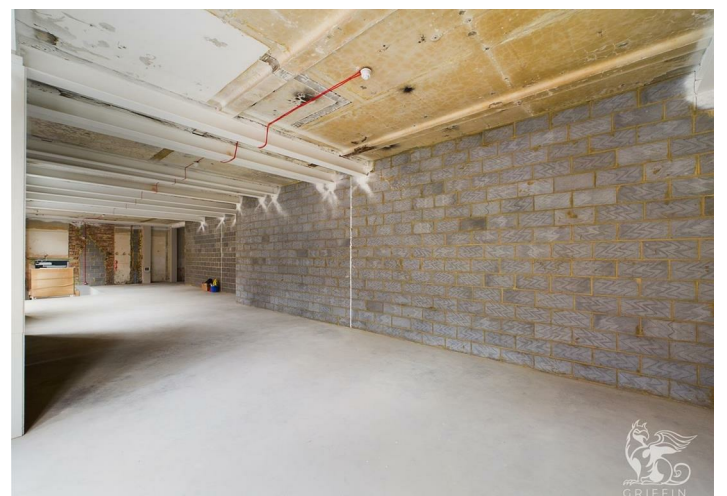
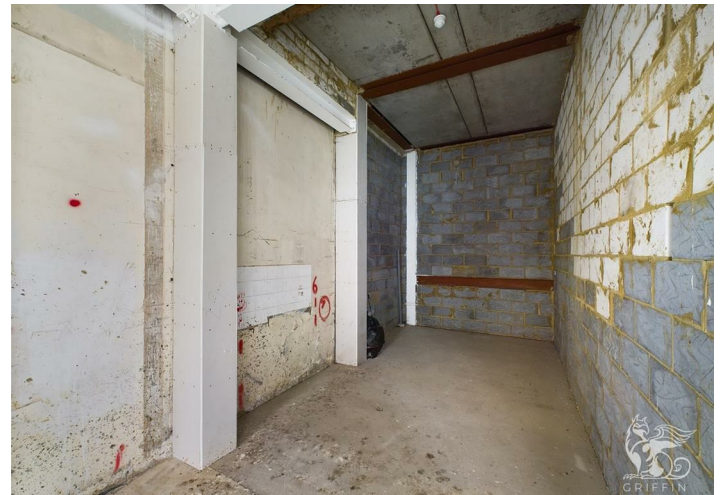
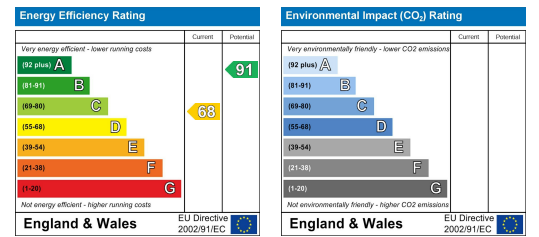
Floor Plan



Area Map



Energy Efficiency Graph



These particulars, whilst believed to be accurate are set out as a general outline only for guidance and do not constitute any part of an offer or contract. Intending purchasers should not rely on them as statements of representation of fact, but must satisfy themselves by inspection or otherwise as to their accuracy. No person in this firm's employment has the authority to make or give any representation or warranty in respect of the property.