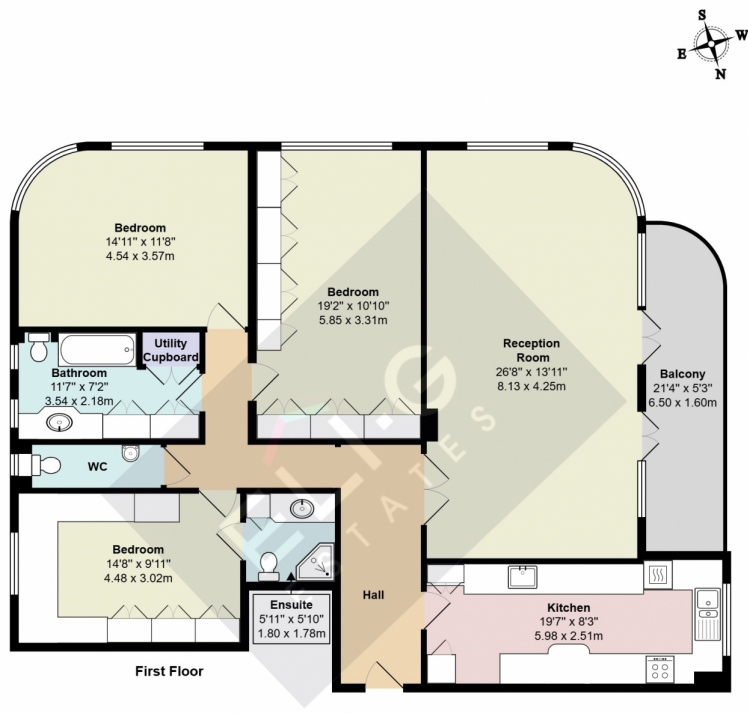




A great size first floor apartment is available chain free in this wonderful prestigious block & comes with a share of freehold ! The property is in generally good decorative order & real generously sized property allowing for great dimensions throughout. The property has a wonderful size dining room lounge with a balcony overlooking Woodlands giving a little extra privacy The dining room room has a dual aspect & is sitting on the South West aspects allowing for fantastic daylight throughout the day & letting in the maximum sunlight. The kitchen has plenty of cupboard spaces 2.5 sinks as well as an eat in area, There are three double bedrooms, currently set out as one main bedroom, a second lounge area & the thrid room is currently setup as a home office with a toilet shower en-suite, there is a family toilet bathroom as well as a guest wc.



First Floor

Riverside Drive NW11

Total Area: 1407 ft² ... 130.7 m²

All measurements are approximate and for display purposes only

Energy Efficiency Rating

	Current	Potential
<i>Very energy efficient - lower running costs</i>		
(92+) A		
(81-91) B		
(69-80) C		
(55-68) D		
(39-54) E		
(21-38) F		
(1-20) G		
<i>Not energy efficient - higher running costs</i>		
	72	82
England, Scotland & Wales	EU Directive 2002/91/EC	



Address: