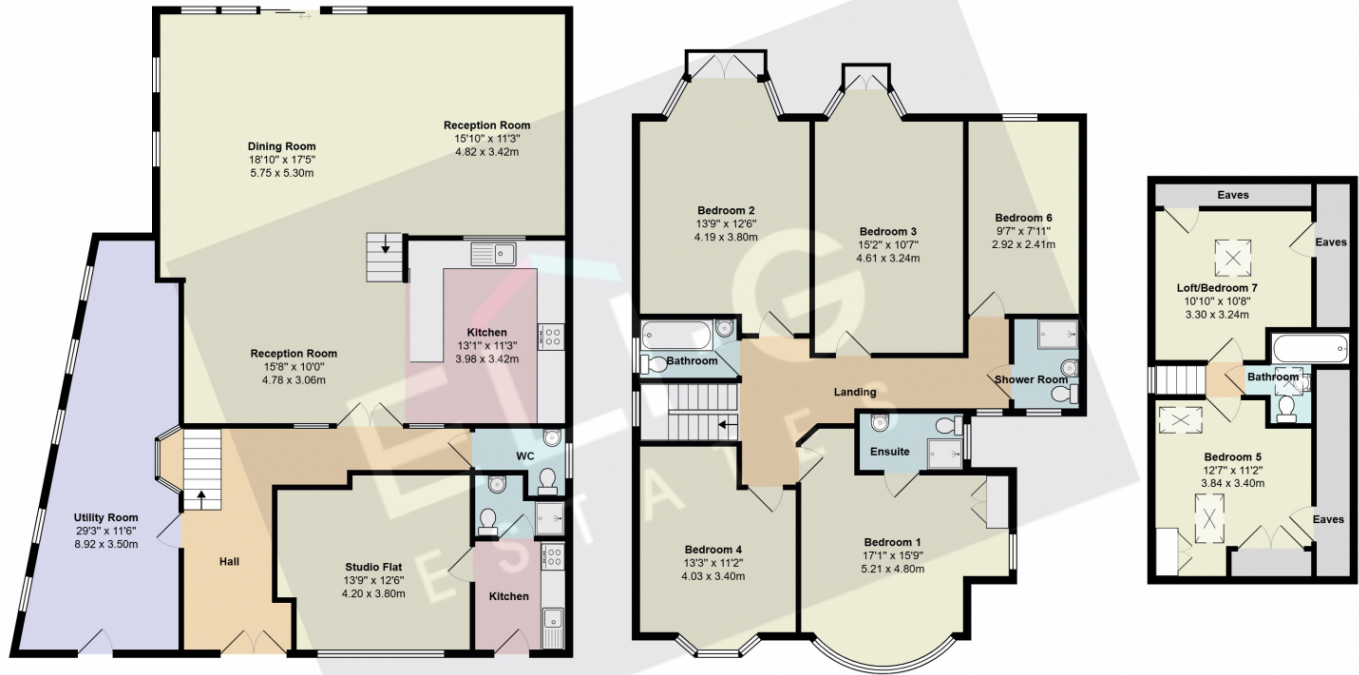


A very good size detached property with a fully self contained one bedroom flat as well as further potential in the loft STPP
Available chain free



Finchley Lane NW4

Total Area: 3261 ft² ... 302.9 m²

All measurements are approximate and for display purposes only

Energy Efficiency Rating

	Current	Potential
<i>Very energy efficient - lower running costs</i>		
(92+) A		
(81-91) B		
(69-80) C		74
(55-68) D	58	
(39-54) E		
(21-38) F		
(1-20) G		
<i>Not energy efficient - higher running costs</i>		
England, Scotland & Wales	EU Directive 2002/91/EC	



Address: Finchley Lane, NW4