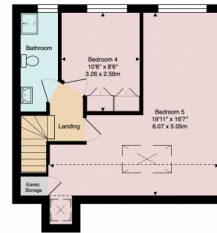
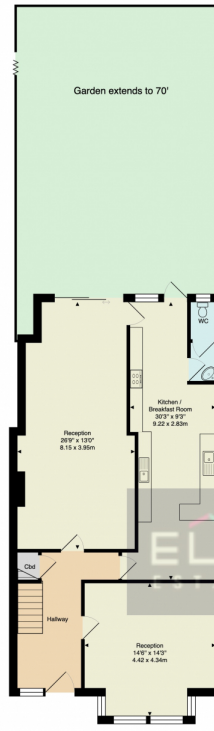




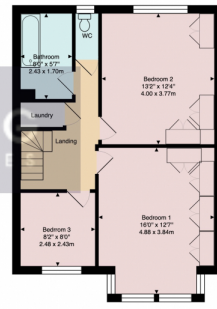
Five bedrooms - four of which are doubles, Dining room lounge, Kitchen morning room, large study, built in Succah, Large garden & a double driveway

The property benefits from a really good size garden, a quiet no through road & lovely neighbourly vibe on the street. It is also very well located both for transport links, being only a few minutes from Brent Cross Station, a few minutes from local schools, shops & places of worship

Montpelier Rise,  
Golders Green,  
London, NW11 9DS



Second Floor



First Floor

Approx. Gross Internal Area: 1949 sq. ft. / 181.1 m<sup>2</sup> (excluding eaves storage)

### Energy Efficiency Rating

	Current	Potential
Very energy efficient - lower running costs		
(92+) <b>A</b>		
(81-91) <b>B</b>		
(69-80) <b>C</b>		<b>81</b>
(55-68) <b>D</b>	<b>70</b>	
(39-54) <b>E</b>		
(21-38) <b>F</b>		
(1-20) <b>G</b>		
Not energy efficient - higher running costs		
<b>England, Scotland &amp; Wales</b>	EU Directive 2002/91/EC	



Address: