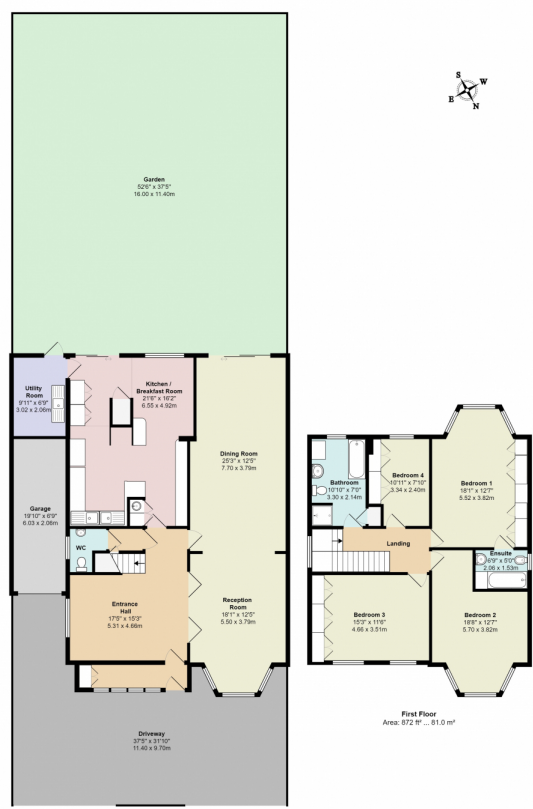




**A large 4 bedroom linked detached house on Mayfield Gardens in the Shirehall Estate offered chain free
Plenty off street parking, decent garden & lots of potential subject to planning
Viewings are highly recommended**



Ground Floor Area: 1419.87 m² ... 151.9 m²
 Mayfield Gardens NW4
 Total Area: 2252.87 m² ... 242.8 m²
 (Include Garage)
 All measurements are approximate and for display purposes only

Energy Efficiency Rating

	Current	Potential
Very energy efficient - lower running costs		
(92+) A		
(81-91) B		
(69-80) C		78
(55-68) D		
(39-54) E	45	
(21-38) F		
(1-20) G		
Not energy efficient - higher running costs		



England, Scotland & Wales EU Directive 2002/91/EC

Address: Mayfield Gardens, NW4