



## Dollis Road, N3

£1,675 Per calendar month

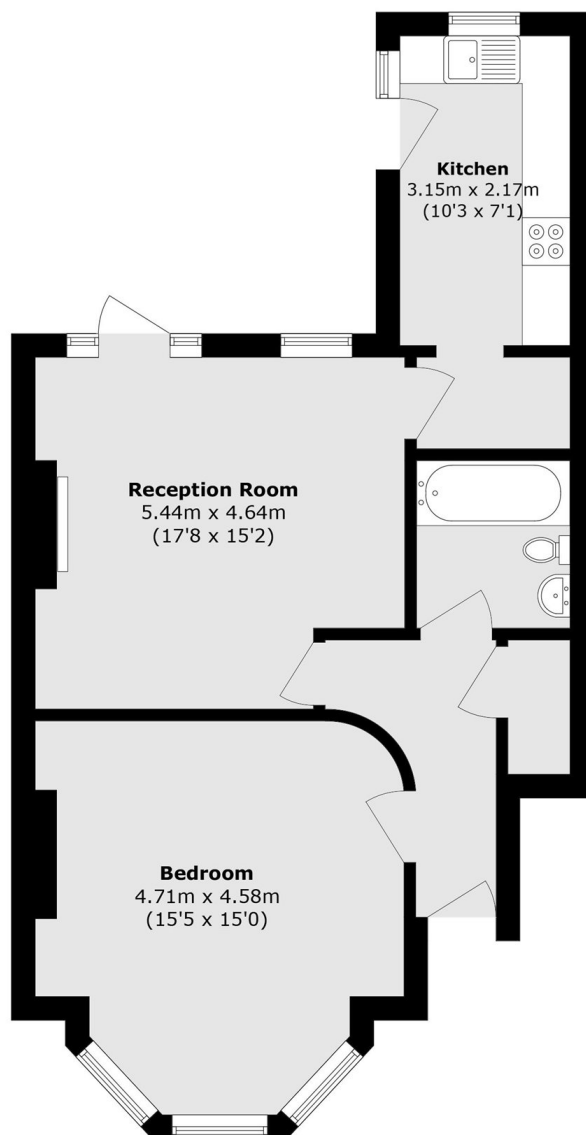
A generously sized one-bedroom ground-floor flat benefiting from sole use of a private garden, with direct access from the property. The accommodation further features a contemporary kitchen and a modern bathroom.

Ideally located within close proximity to the local amenities, shops, and restaurants of Finchley Central, the property is also well served by Finchley Central Underground Station, offering excellent transport links into the City.

### Features

- 1 Bedroom
- 1 Reception
- 1 Bathroom
- Ground Floor
- Garden
- Modern

# Dollis Road, London, N3



Total area (approx.): 63.1 sq. m (679.2 sq. ft)