



Queens Avenue, N3

£1,100,000

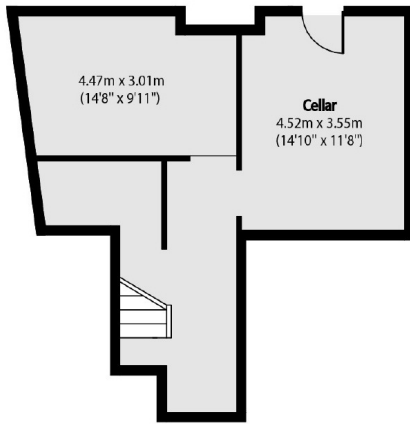
On the market for the first time in over 70 years, this attractive 1920's family home comes complete with four bedrooms, three reception rooms, a large basement, family bathroom and sizable South West facing rear garden.

Located moments from Finchley Central, offering fantastic rail links across the capital as well as highly regarded schooling. Ballards Lane is within walking distance, offering an array of restaurants, coffee shops and retail outlets, as is Victoria Park.

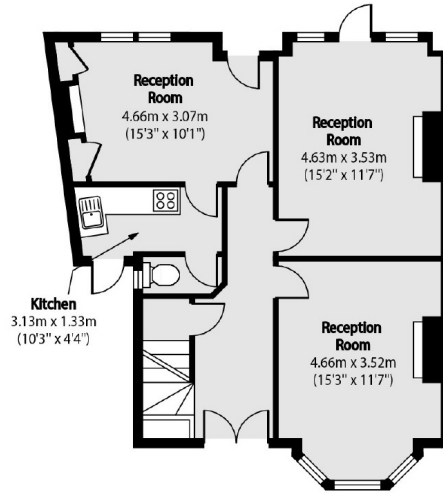
Features

- Four Bedrooms
- Three Reception Rooms
- Large Garden
- Development Opportunity
- No Chain
- Substantial Basement

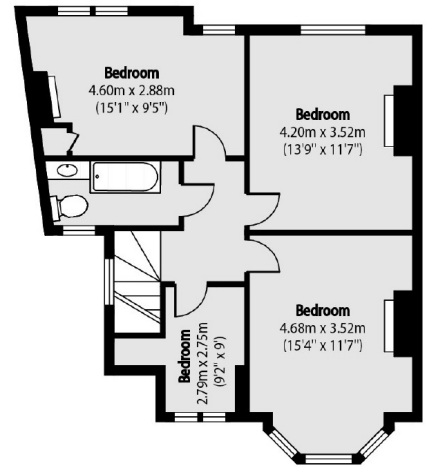
Queens Avenue, London, N3



Lower Ground Floor



Ground Floor



First Floor

Total area (approx): 122.45 sq m (1318 sq. ft)
(Excluding Cellar)

Cellar total area (approx): 44.60 sq m (480 sq. ft)