



Bittacy Hill, NW7

£375,000

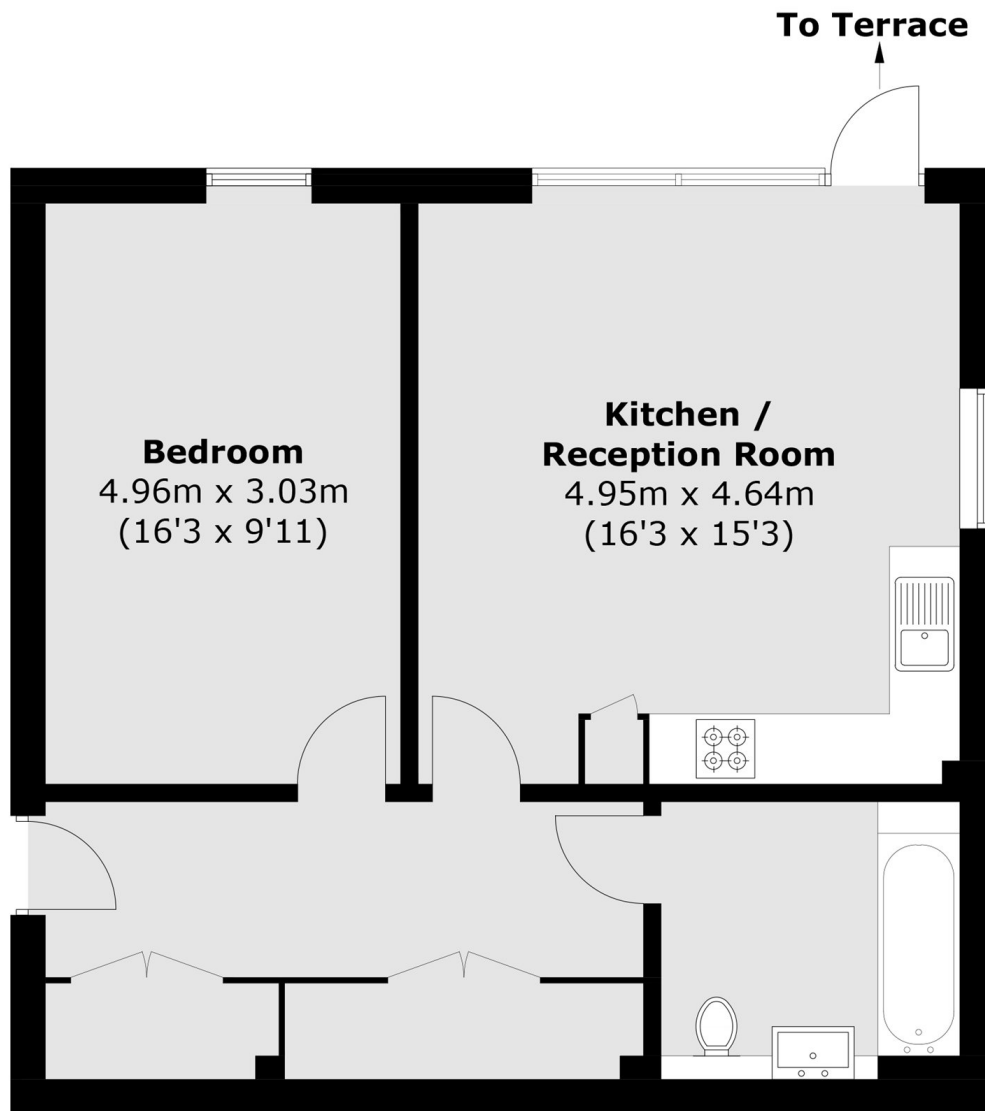
A well presented one bedroom apartment situated within this modern development. This property has an open plan kitchen/ reception room, a large bedroom and a private terrace.

Brooklime apartments is located just 0.2 Miles from Mill Hill East Station (Northern) and close to Mill Hill Village offering countryside views and walks. The property is located a short walk from the local amenities Mill Hill offers such as shops, café's and restaurants, and a leisure centre.

Features

- One Double Bedroom
- Private Terrace
- Close to Amenities
- Secure Fob Entry System
- Open Plan
- Modern Development

Bittacy Hill, London, NW7



Ground Floor

Total area (approx.): 59.1 sq. m (636.1 sq. ft)

Dexters

Finchley
126 Ballards Lane
Finchley
London
Sales
020 8742 4180

Energy Rating: B. We aim to make our particulars both accurate and reliable. However they are not guaranteed; nor do they form part of an offer or contract. If you require clarification on any points then please contact us, especially if you're traveling some distance to view. Please note that appliances and heating systems have not been tested and therefore no warranties can be given as to their good working order.

RICS | Regulated
Estate Agent
and Letting Agent

dexters.co.uk