



## Woodberry Gardens, N12

### £330,000

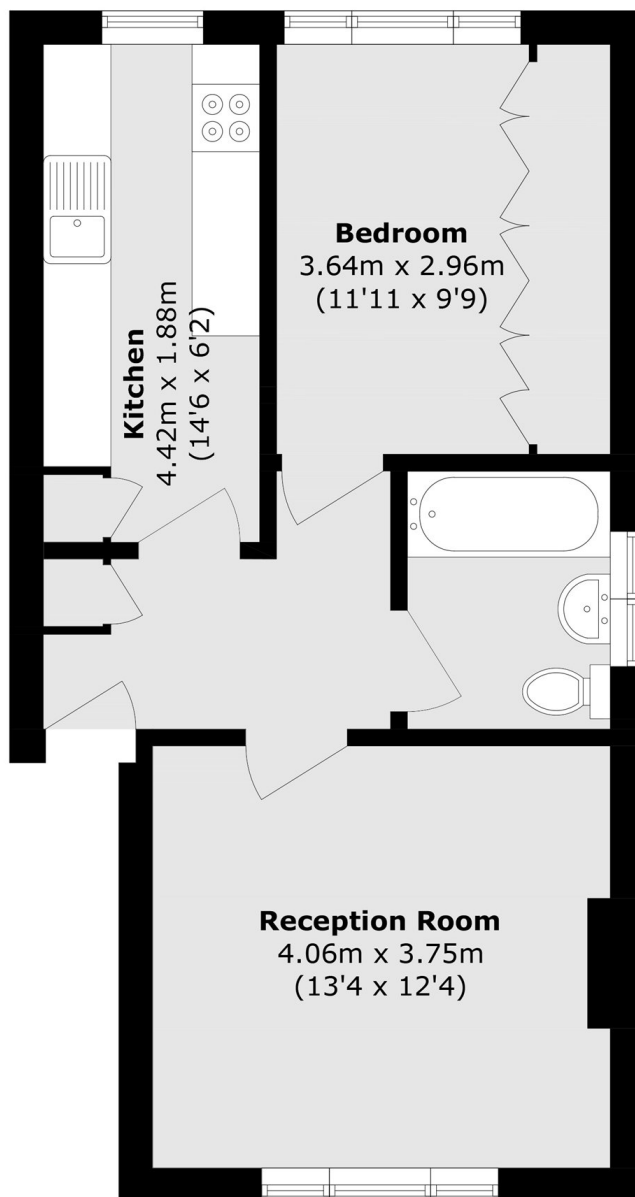
A well presented one bedroom apartment set on the top floor of this purpose built block. This property has a separate kitchen, a communal garden and plenty of storage throughout.

Conveniently positioned equidistant from the amenities of North Finchley and Finchley Central. Local transport links include West Finchley underground station, offering frequent services along the Northern line.

### Features

- One Double Bedroom
- Separate Kitchen
- Communal Garden
- Ample Storage
- Excellent Transport Links
- Close to Amenities

# Woodberry Gardens, London, N12



Total area (approx.): 46.4 sq. m (499.4 sq. ft)