



## Spencer Road, N11

£3,250 Per calendar month

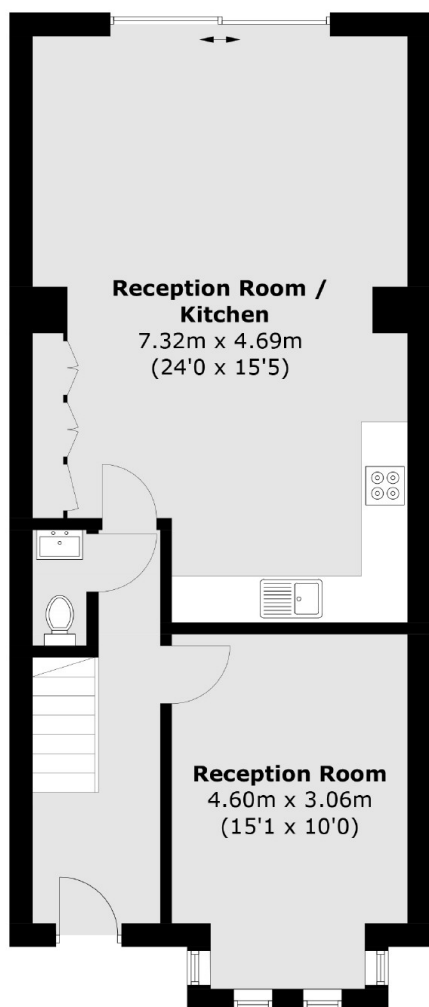
A recently refurbished four bedroom, two bathroom house, set over three levels, with two reception rooms and a open plan kitchen reception area

Close to Arnos Grove Station and Bethune Park. Local amenities can be found on Bowes Road.

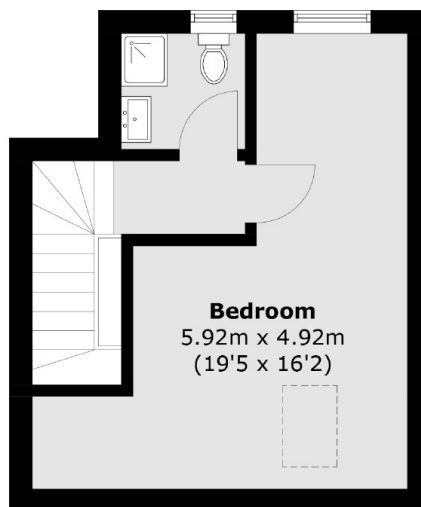
### Features

- Four Bedrooms
- Two Receptions
- Two Bathrooms
- Recently Refurbished
- Kitchen Reception
- Garden

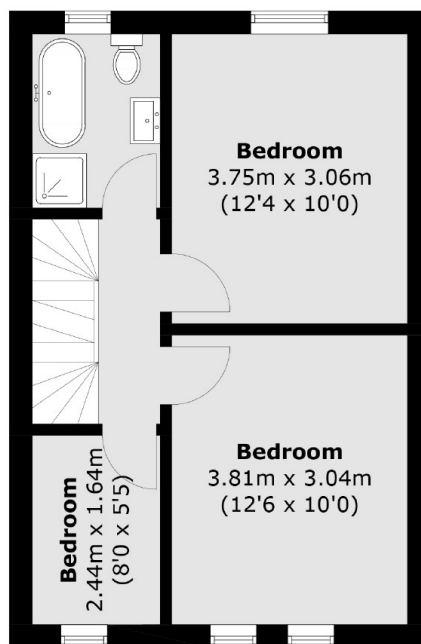
# Spencer Road, London, N11



**Ground Floor**



**Second Floor**



**First Floor**

Total area (approx.): 121.8 sq. m (1,311.0 sq. ft)