



Stanhope Avenue, N3

£1,850 Per calendar month

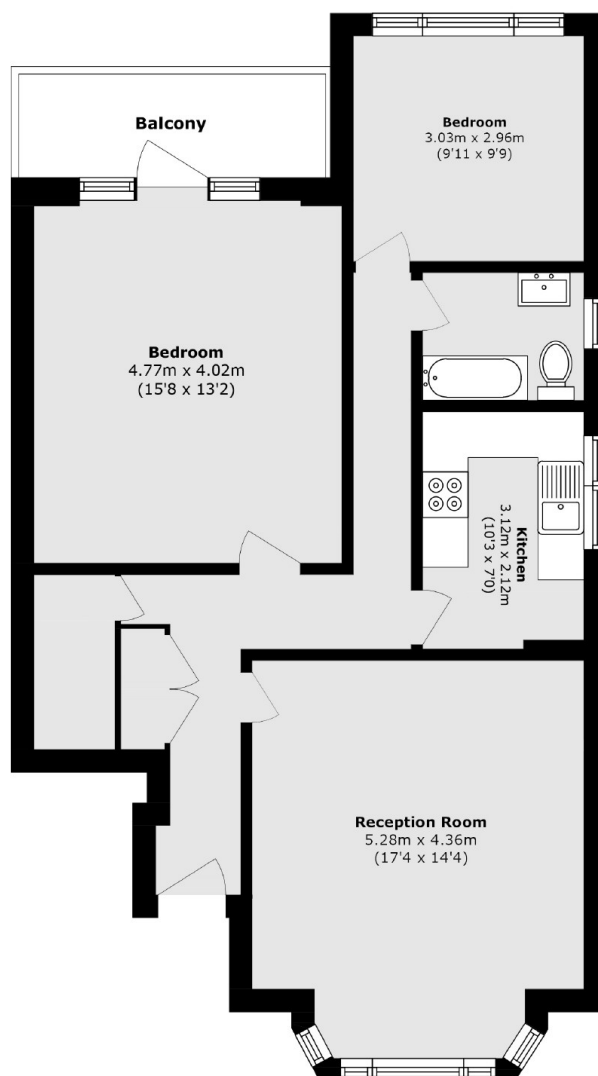
A larger than average two double bedroom ground floor conversion, fully fitted kitchen, bathroom, The property also benefits from a balcony and a communal garden

Walking distance to Finchley Central underground station and local amenities

Features

- Two Bedrooms
- One Bathroom
- Balcony
- Ground Floor
- Unfurnished
- Communal Garden

Stanhope Avenue, London, N3



Total area (approx.): 77.0 sq. m (828.8 sq. ft)

Terrace area (approx.): 5.4 sq. m (58.1 sq. ft)