



## Bow Lane, N12

£3,250 Per calendar month

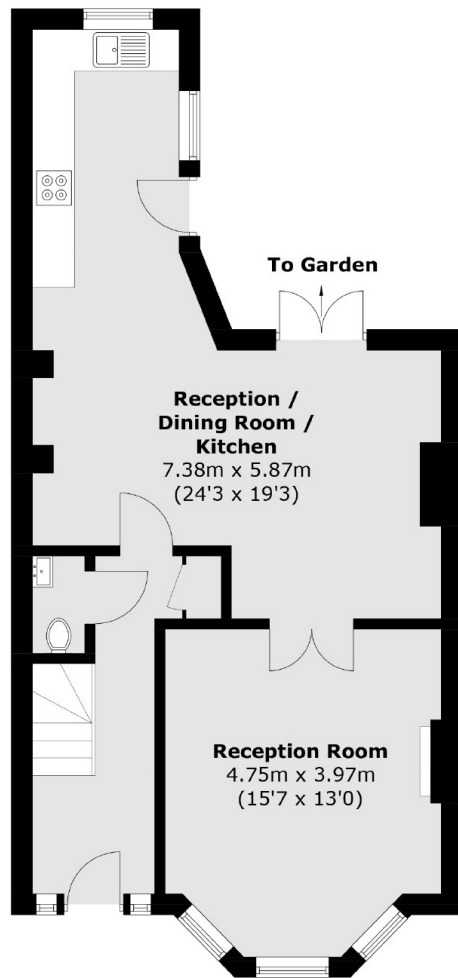
A four bedroom family home with period features arranged over three floors, has a spacious reception room which connects into the dining room. Other benefits include a downstairs WC and a well maintained rear garden

Situated close Victoria Park and Ballards Lane, a high street with a range of local amenities, shops and restaurants.

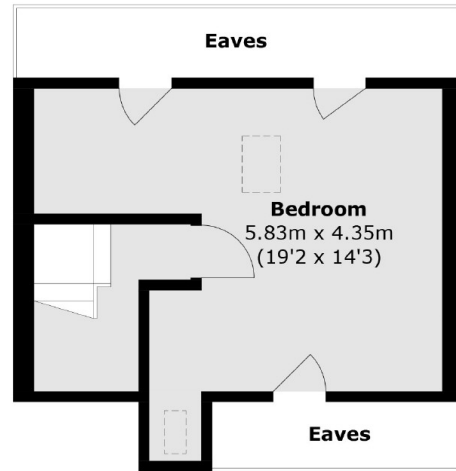
### Features

- 4 Bedrooms
- 2 Receptions
- 1 Bathroom
- Period Features
- Modern
- Garden

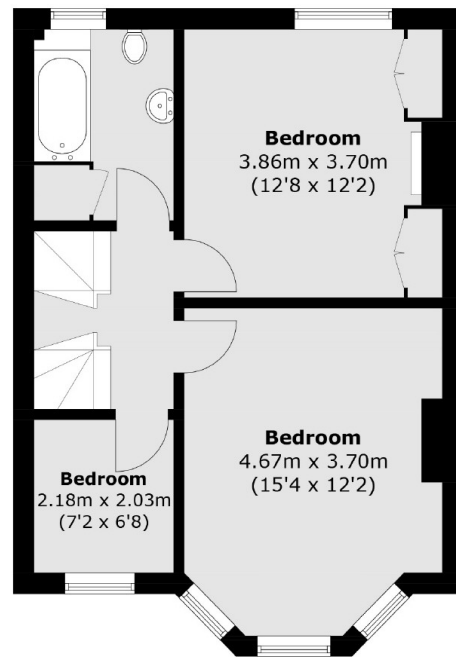
# Bow Lane, London, N12



**Ground Floor**



**Second Floor**



**First Floor**

Total area (approx.): 132.1 sq. m (1421.8 sq. ft)  
(Excluding Eaves)