



Harris Close, N11

£4,500 Per calendar month

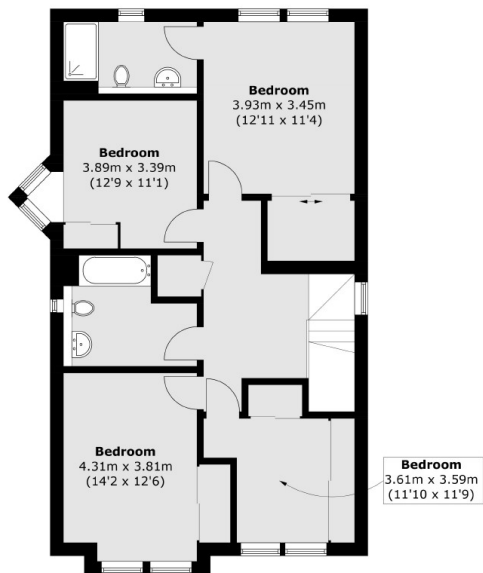
A beautifully presented four bedroom detached home set within a gated close. Arranged over three floors this property has two reception rooms, a large open plan kitchen and has been renovated to a high standard.

Harris Close is a residential area on the borders of Friern Park, ideally located within the catchment area for several highly regarded schools and within walking distance of green spaces, local amenities and excellent public transport links.

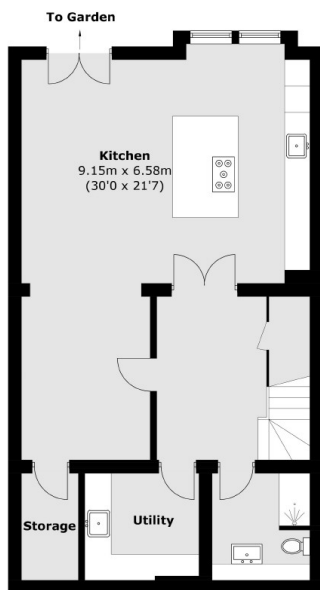
Features

- Detached
- Four Double Bedrooms
- Off Street Parking
- Gated Mews
- Quiet Road
- Recently Renovated

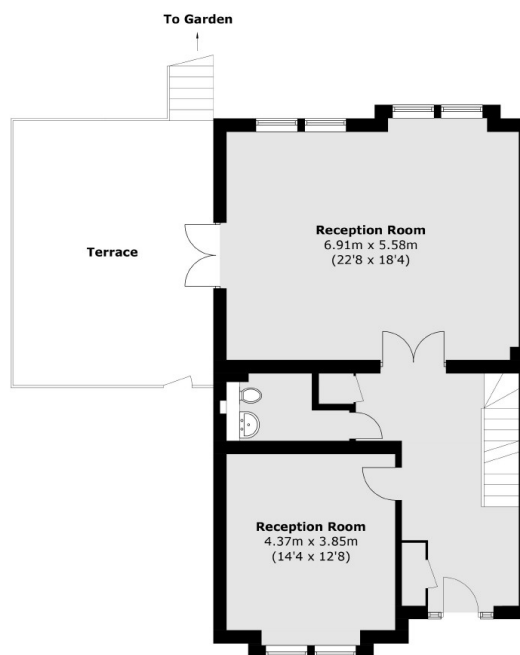
Harris Close, London, N11



First Floor



Lower Ground Floor



Ground Floor

Total area (approx.): 236.6 sq. m (2,546.6 sq. ft)
Terrace: 27.6 sq. m (297.1 sq. ft)