



Holly Park Gardens, N3

£1,400,000

A contemporary four bedroom detached house with a large rear garden and ample parking in this sought after turning, close to College Farm and local schools.

Holly Park Gardens is well located for access to Church End, Finchley Central underground, the amenities of Temple Fortune and local places of worship.

Features

- Four Bedrooms
- Three Bathrooms
- Two Reception Rooms
- Kitchen/Breakfast Room
- Large rear garden
- Garage And Parking



Holly Park Gardens, N3

This delightful home is well-presented and features double height floor to ceiling windows to the rear, overlooking the garden from both reception rooms.

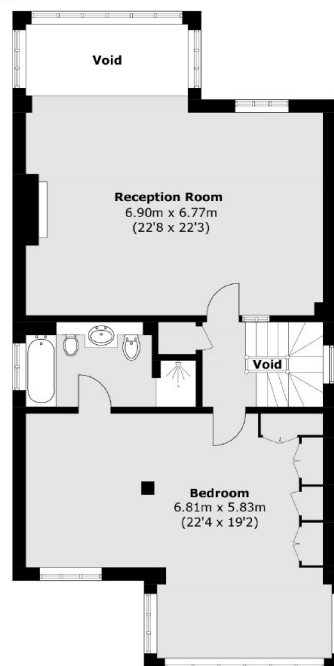
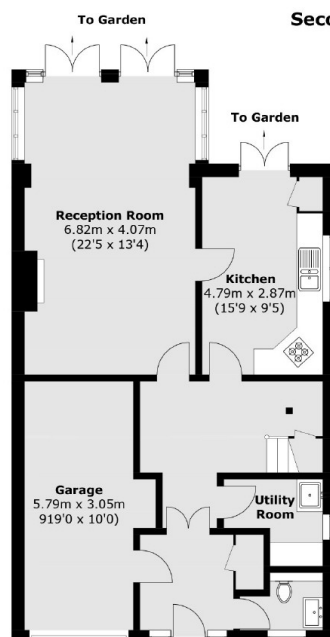
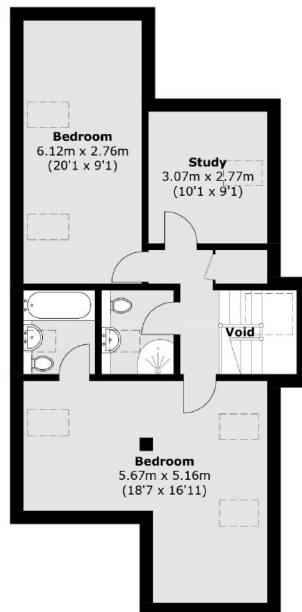
In addition, on the ground floor is a spacious and welcoming entrance hall, guest wc, utility room and kitchen breakfast room.

The principal bedroom on the first floor measures 22'4 x 19'2 and has generous wardrobe space and an en suite bathroom. There are three further bedrooms and two bathrooms on the upper floor.

Externally, there is a large rear garden, mainly laid to lawn along with a spacious patio area, ideal for entertaining. To the front there is off-street parking for several cars.



Holly Park Gardens, London, N3



Total area (approx.): 230.0 sq. m (2,475.5 sq. ft)
(Excluding Void)

Dexters

Finchley
126 Ballards Lane
Finchley
London
Sales
020 8742 4180

Energy Rating: D. We aim to make our particulars both accurate and reliable. However they are not guaranteed; nor do they form part of an offer or contract. If you require clarification on any points then please contact us, especially if you're traveling some distance to view. Please note that appliances and heating systems have not been tested and therefore no warranties can be given as to their good working order.

 **RICS** | Regulated
Estate Agent
and Letting Agent

dexters.co.uk