



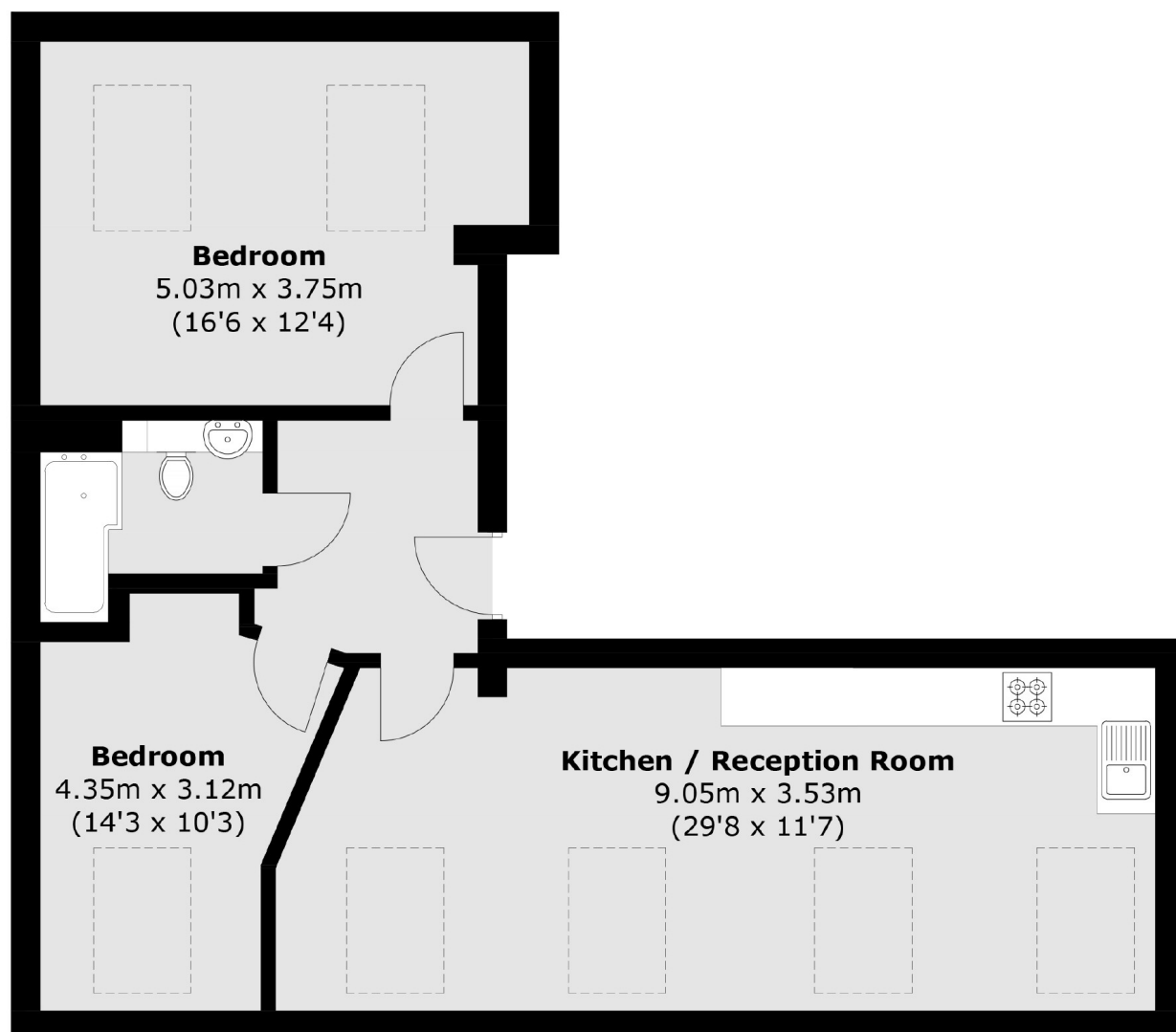
## High Road, N20

£379,000

A stylish two bedroom apartment on the top floor of a converted bank. Located just 0.5 miles from Totteridge and Whetstone station on the Northern Line. The property spans across 749sqf and is in immaculate condition.

### Features

# High Road, London, N20



Total area (approx.): 70.6 sq. m (759.9 sq. ft)