



Harris Close, N11

£1,400,000

A beautifully presented four bedroom detached home set within a gated close. Arranged over three floors this property has two reception rooms, a large open plan kitchen and has been renovated to a high standard.

Harris Close is a residential area on the borders of Friern Park, ideally located within the catchment area for several highly regarded schools and within walking distance of green spaces, local amenities and excellent public transport links.

Features

- Detached
- Four Double Bedrooms
- Off Street Parking
- Gated Mews
- Freehold House
- Recently Renovated



Harris Close, N11

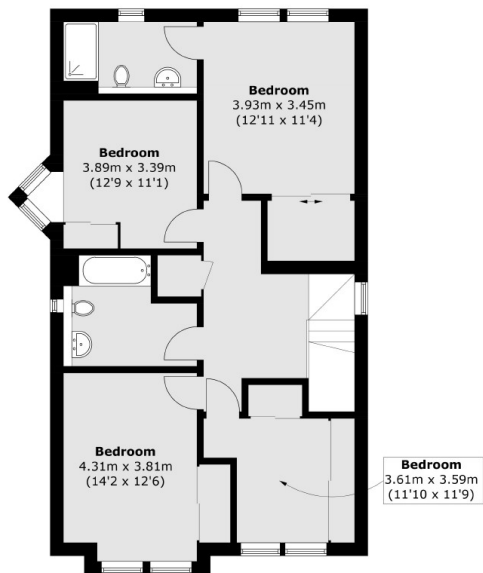
As you enter on the ground floor there is one of the reception rooms featuring a bay window. There is a guest WC and the main reception room is to the rear of the house and opens up onto a private terrace, overlooking the garden.

Downstairs you will find the kitchen/ dining room which has integrated appliances and a sleek design. There is a shower room and a utility room on this floor along with lots of storage. There are Bi-folding doors which open up into the low maintenance garden.

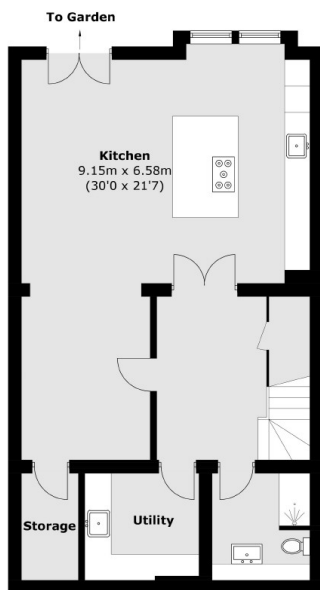
The top floor features the principle bedroom complete with an en-suite, there is a family bathroom and three further bedrooms all of which have lots of storage.



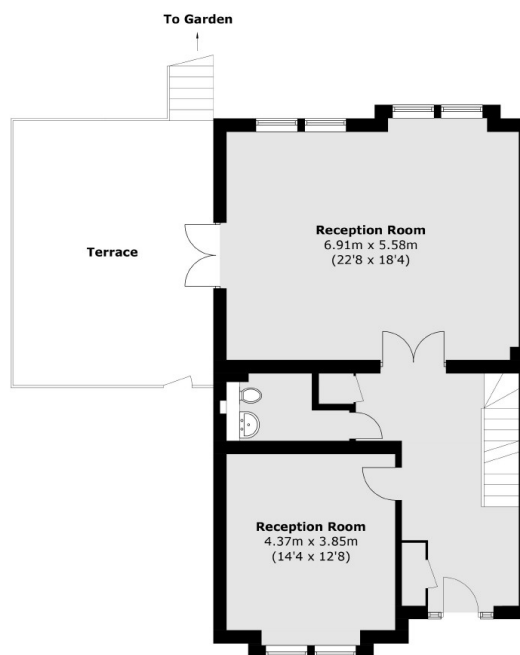
Harris Close, London, N11



First Floor



Lower Ground Floor



Ground Floor

Total area (approx.): 236.6 sq. m (2,546.6 sq. ft)
Terrace: 27.6 sq. m (297.1 sq. ft)