



Etchingham Park Road, N3

£400,000

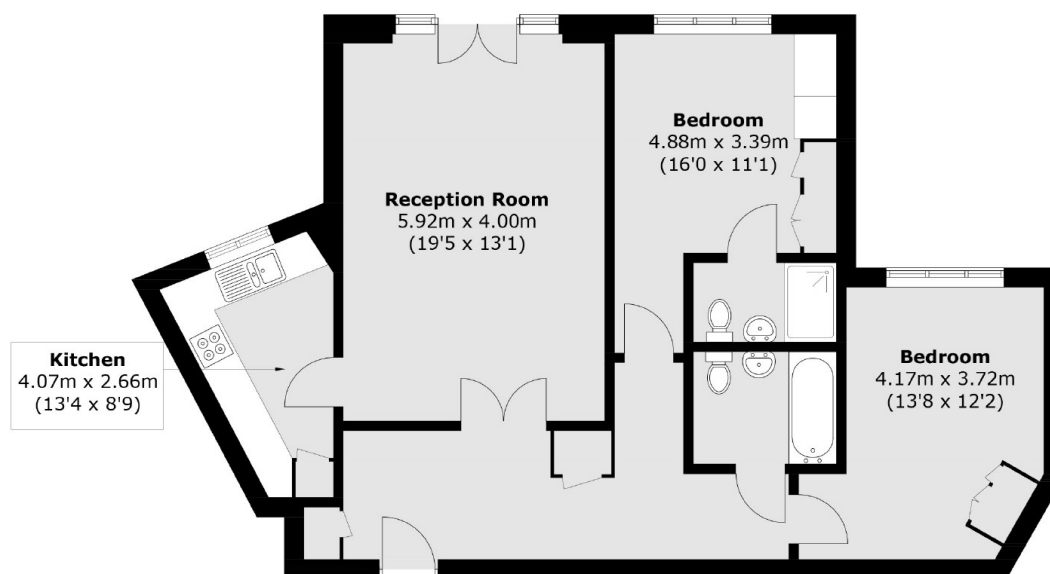
A well presented two bedroom apartment on the ground floor of this purpose built development. This property has a separate kitchen, two bathrooms and an allocated parking space.

Etchingham Park Road runs parallel to Victoria Park in Finchley Central, making it a highly sought-after location. It offers convenient access to local amenities, falls within the catchment area for excellent schools, and benefits from strong public transport links, including the Northern Line.

Features

- Two Double Bedrooms
- Two Bathrooms
- Allocated Parking
- Communal Garden
- Lots of Storage
- Separate Kitchen

Etchingam Park Road, London, N3



Total area (approx.): 82.0 sq. m (882.6 sq. ft)

Dexters

Finchley
126 Ballards Lane
Finchley
London
Sales
020 8742 4180

Energy Rating: C. We aim to make our particulars both accurate and reliable. However they are not guaranteed; nor do they form part of an offer or contract. If you require clarification on any points then please contact us, especially if you're traveling some distance to view. Please note that appliances and heating systems have not been tested and therefore no warranties can be given as to their good working order.

 **RICS** | Regulated
Estate Agent
and Letting Agent

[dexters.co.uk](https://www.dexters.co.uk)